

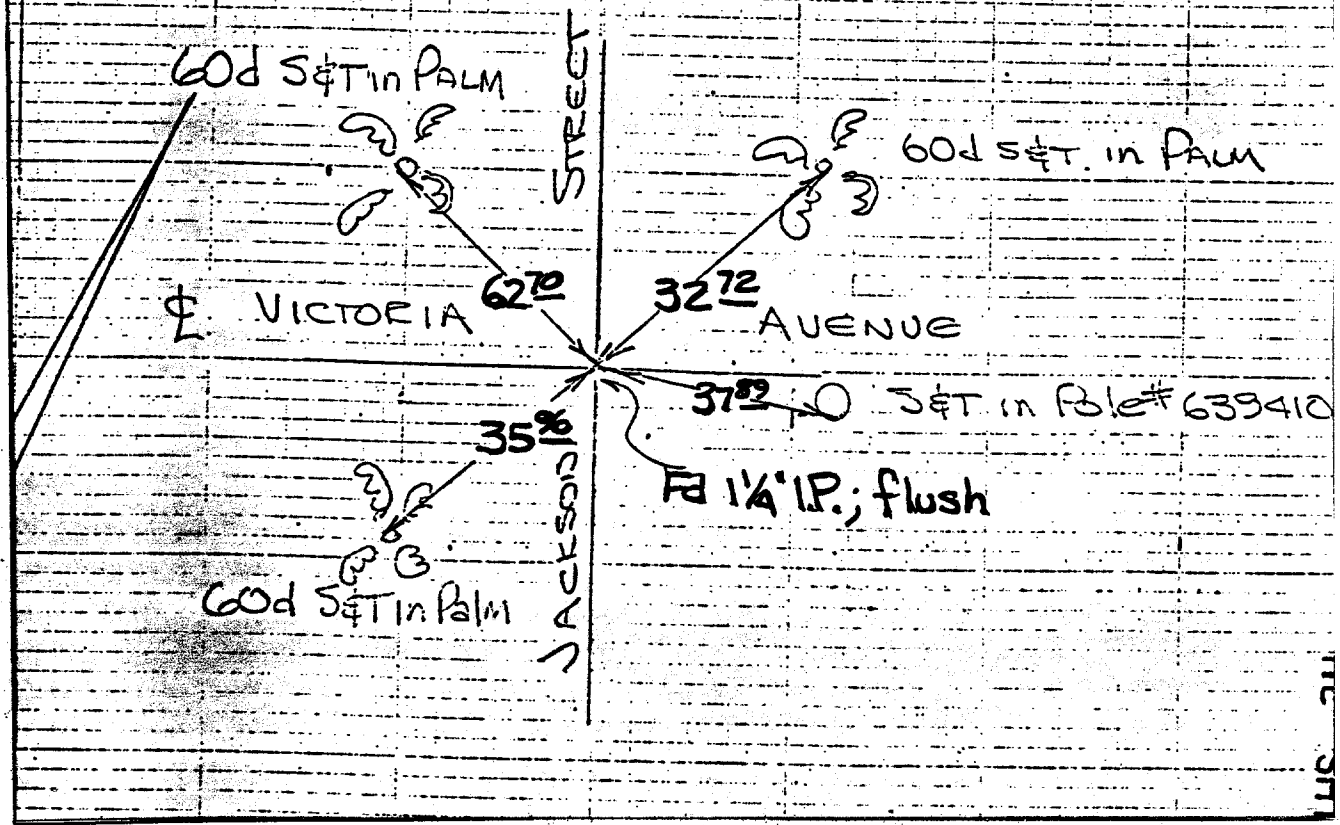
Street: VICTORIA AVE  
8311.TIF  
 X-Street: JACKSON ST.  
 OFFICIAL USE ONLY

JACKSON STREET  
 AT  
 VICTORIA AVENUE

SWING TIES

HISTORICAL DATA  
 34

CREW:  
 HUTCHINSON  
 THORP  
 RUSSELL  
 DATE  
 AUGUST 30, 1968  
 CRFB 852/34



- ✕ FD. Ramset Nail on T/C
- FD. LD. & TK. on T/C
- FD. "C" Nail on T/C
- Set LD. & TK. on T/C

Scale:  
 Date:  
 Drawn by:  
 W.O.:  
 F.B.: 852/34

**OFFICIAL TIE PLAT**  
 CITY OF RIVERSIDE

*These ties are for the purpose of perpetuating the found monumentation. No claim is made as to the relationship of the points or lines shown hereon to true boundary locations.*

Sheet 1 of 1  
 File No.: