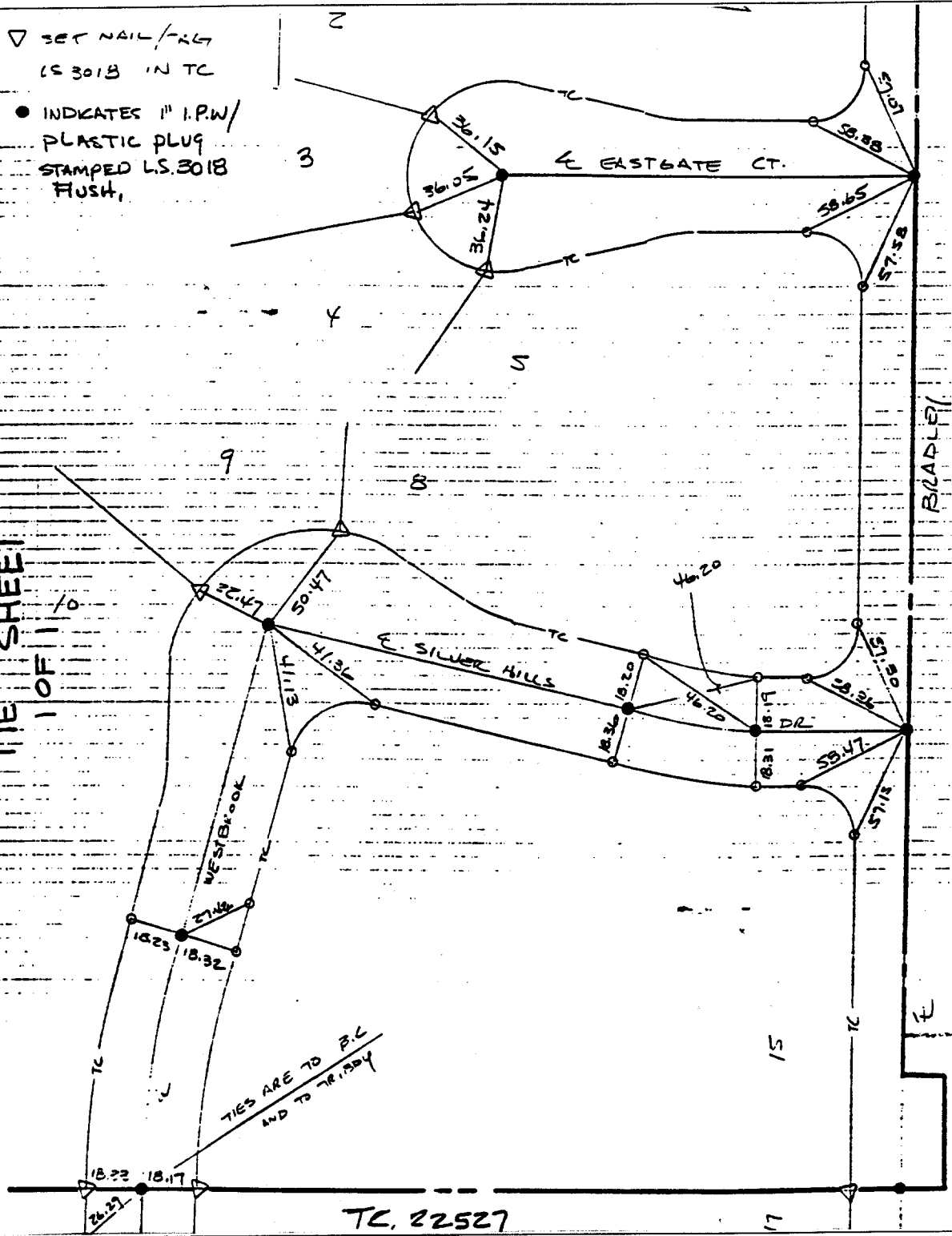


833-T.F

SURVEY NOTES BRADLEY & SONS

- ▽ SET NAIL / TC
LS 3018 IN TC
- INDICATES 1" I.P.W/
PLASTIC PLUG
STAMPED LS.3018
FUSH,

TIE SHEET
1 OF 110



- × FD. Ramset Nail on T/C
- FD. LD. & TK. on T/C
- FD. "C" Nail on T/C
- Set LD. & TK. on T/C

Street: BRADLEY

X-Street: SILVER HILLS DR. OFFICIAL USE ONLY

Scale:
Date:
Drawn by:
W.O.:
F.B.:

OFFICIAL TIE PLAT

CITY OF RIVERSIDE

These ties are for the purpose of perpetuating the found monumentation. No claim is made as to the relationship of the points or lines shown hereon to true boundary locations.

Sheet 1 of 1
File No.: