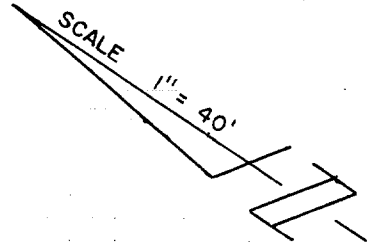


TRACT NO. 19787

STREET Victoria Ave
8345.TIF

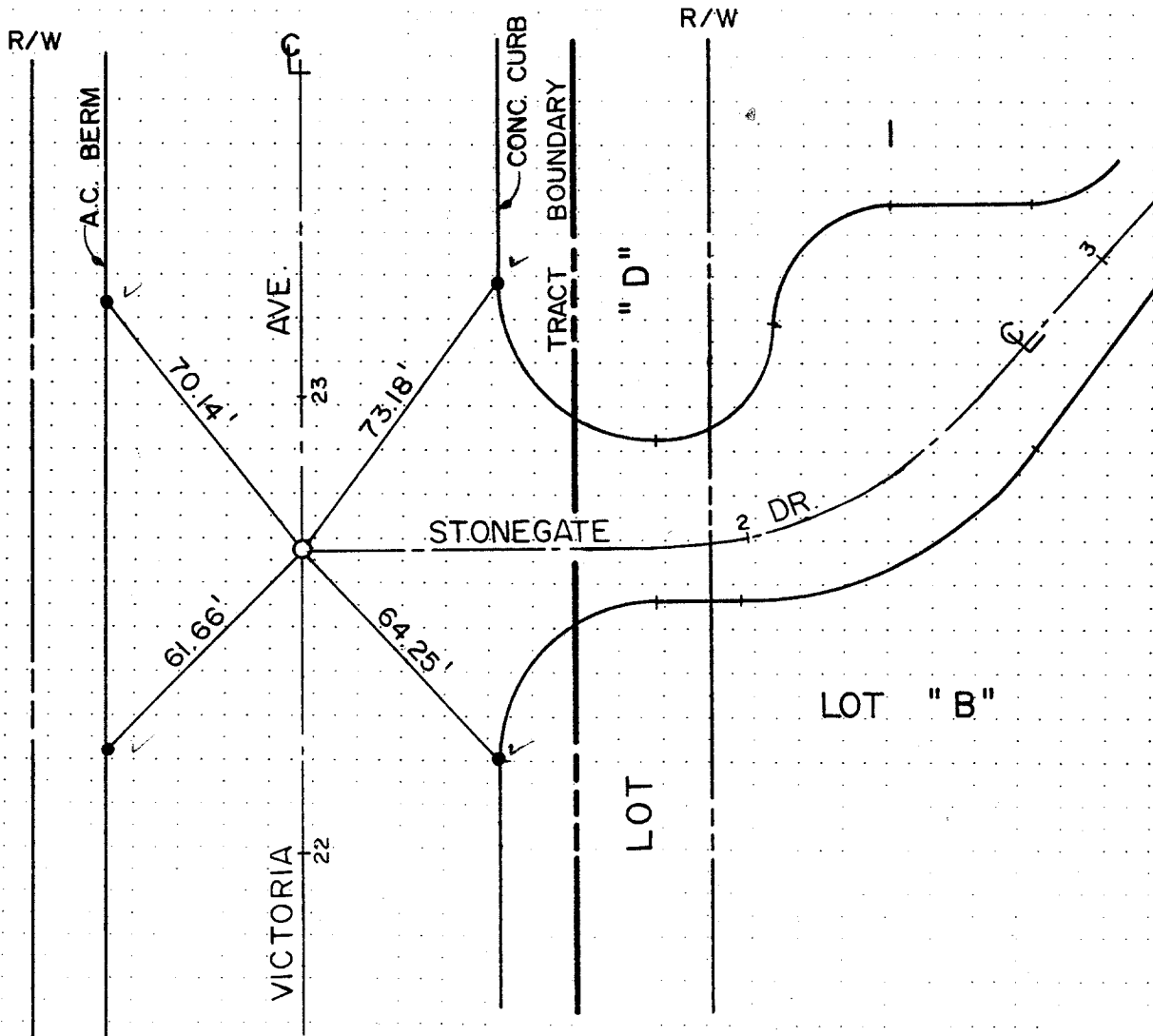
OFFICE USE ONLY X-STREET Stonegate Drive



NOTE: ALL TIE POINTS ARE "L" & "T"
SET IN TOP OF CURB
UNLESS OTHERWISE NOTED

LEGEND

- = 1" I.P. W/ L.S. 5023
- = LEAD & TACK



SCALE: 1" = 40'	OFFICIAL TIE PLAT	SHEET
DATE: 01-26-95	CITY OF RIVERSIDE	2
DR. BY:	PREPARED BY: DAVID A. BOYLE ENGINEERING	OF 2 SHEETS
W.O.: I03-100-51	SANTA ANA CALIFORNIA	FILE NO.:
F.B.:		

12