

TRANSIT & SWING TIES

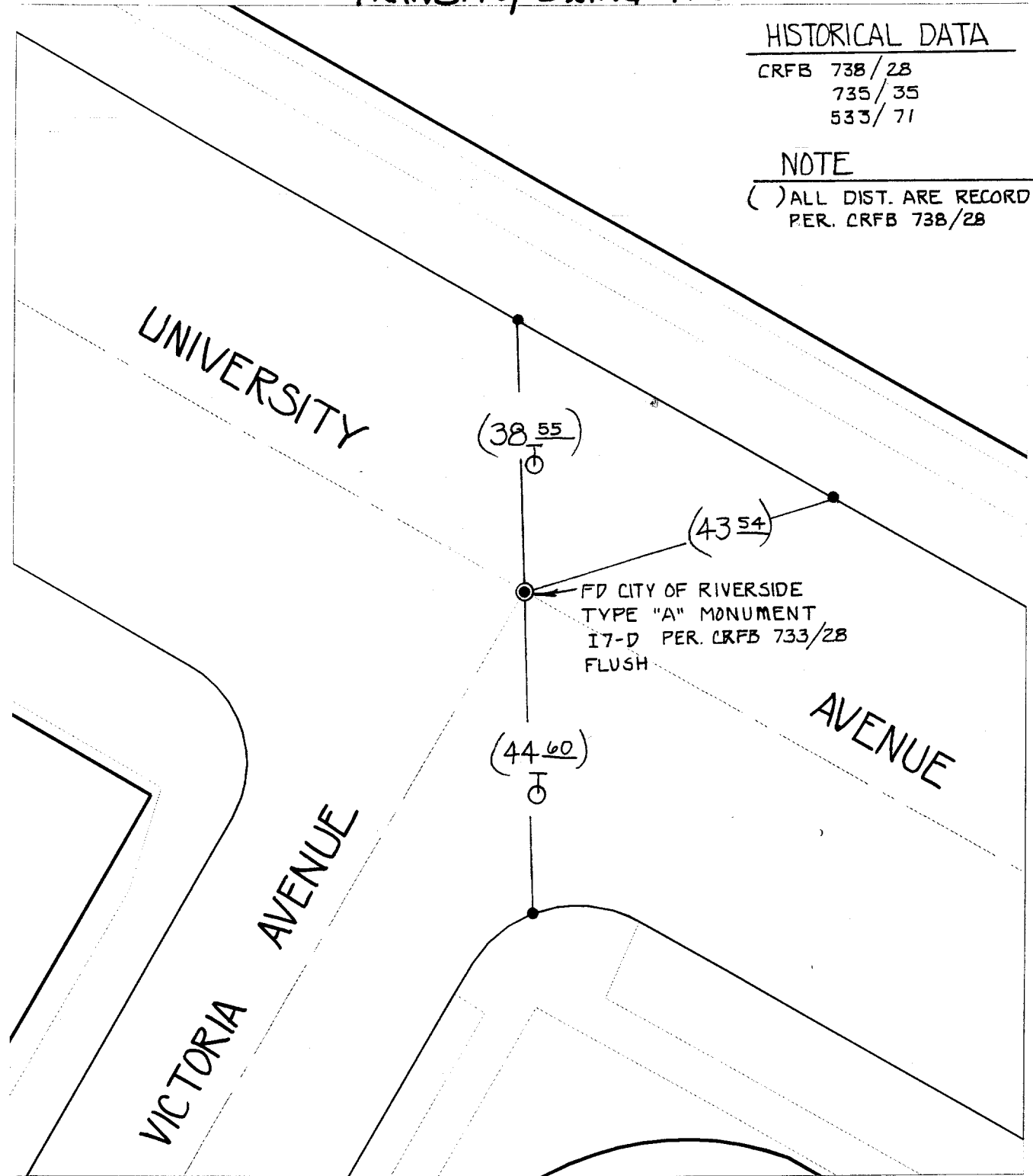
HISTORICAL DATA

CRFB 738/28
735/35
533/71

NOTE

() ALL DIST. ARE RECORD
PER. CRFB 738/28

Street: **8347.TIF** UNIVERSITY AVENUE
X-Street: VICTORIA AVENUE
OFFICIAL USE ONLY



- ✕ FD. Ramset Nail on T/C
- FD. "C" Nail on T/C
- FD. LD. & TK. on T/C
- Set LD. & TK. on T/C

Scale: 1" = 20'
Date: 10/08/98
Drawn by: SURVEY
W.O.:
F.B.:

**OFFICIAL TIE PLAT
CITY OF RIVERSIDE**

These ties are for the purpose of perpetuating the found monumentation. No claim is made as to the relationship of the points or lines shown hereon to true boundary locations.



Sheet 1 of 1
File No.: