



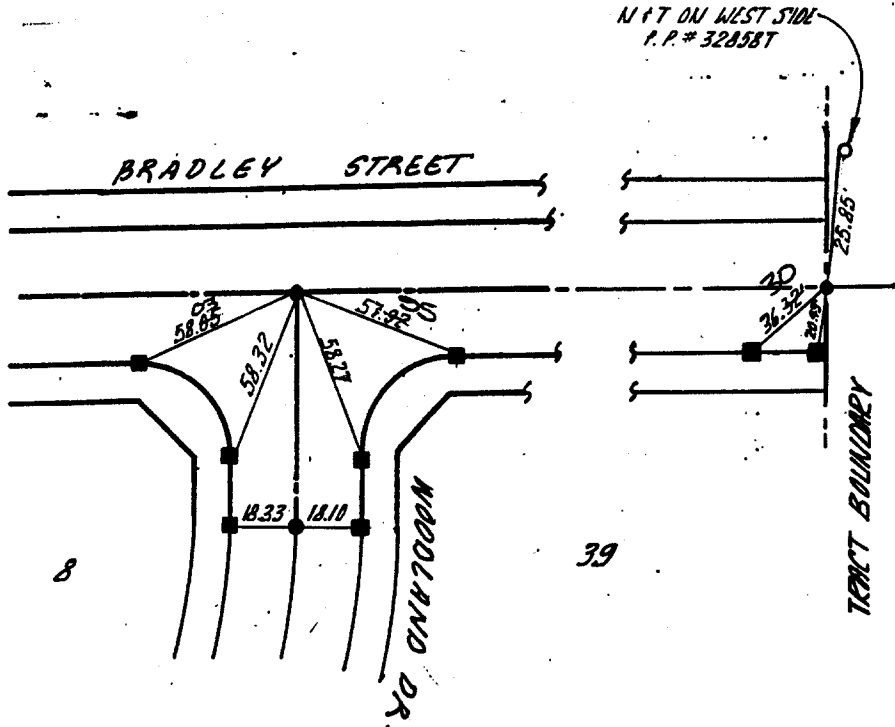
GABEL, COOK & BECKLUND

Environmental • Hydrology • Planning
Civil Engineering • Surveying • Structures
647 North Main Street, Suite 1-B, Riverside, Calif. 92501
Telephone 714 788-8092

SHT 2 OF 6

TIES TR. 21198-1

835. TIF



- INDICATES SET 1" I.R. FLUSH - RCE-21740
- INDICATES SET LEAD & TACK

- × FD. Ramset Nail on T/C
- FD. "C" Nail on T/C

- FD. LD. & TK. on T/C
- Set LD. & TK. on T/C

Street: BRADLEY ST.

OFFICIAL USE ONLY

X-Street: WOODLAND DR.

Scale:

Date:

Drawn by:

W.O.:

F.B.:

OFFICIAL TIE PLAT

CITY OF RIVERSIDE

These ties are for the purpose of perpetuating the found monumentation. No claim is made as to the relationship of the points or lines shown hereon to true boundary locations.

Sheet 2 of 6

File No.: