

PARCEL MAP NO. 14070

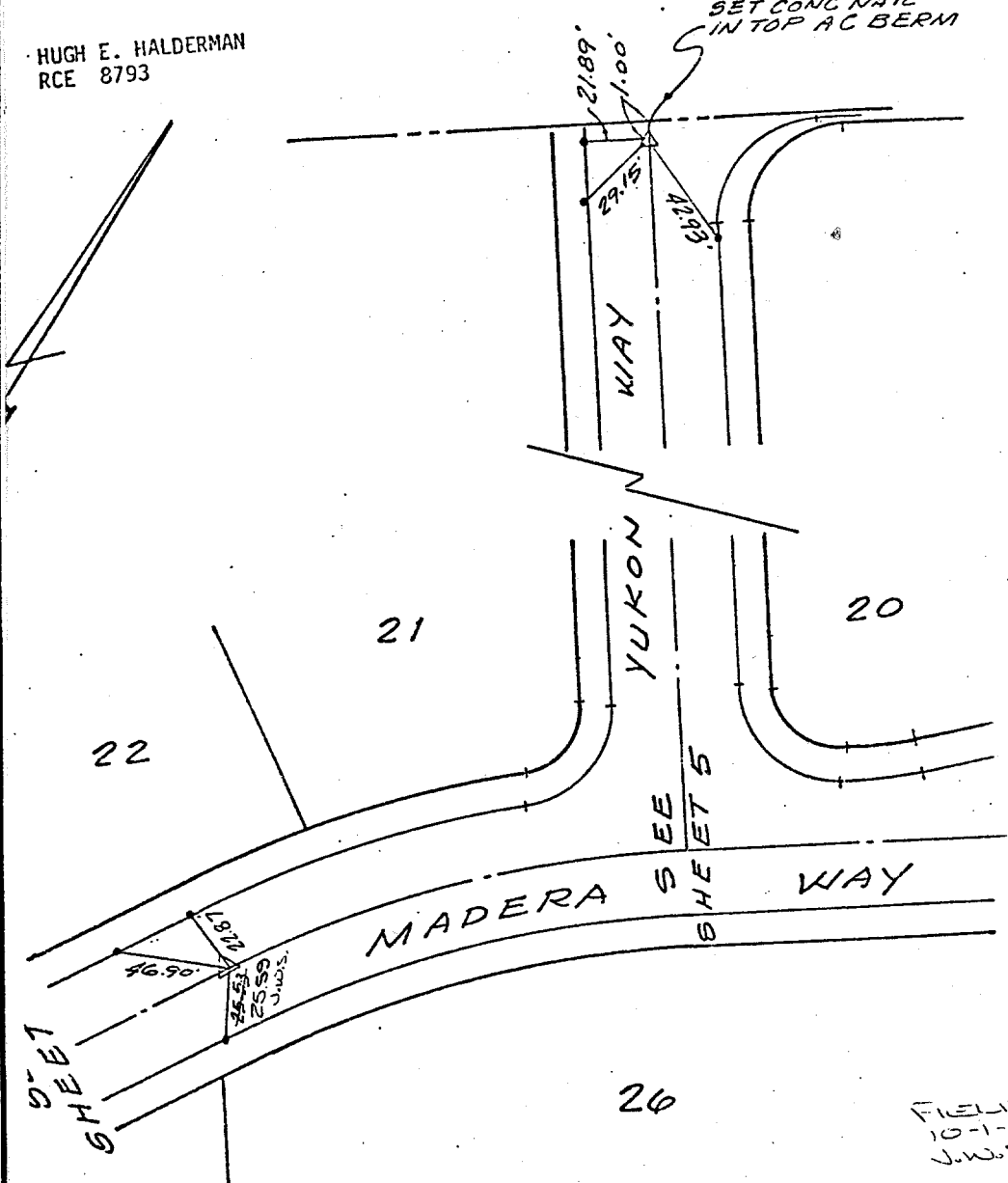
PAGE 7 OF 7 PAGES

DATE: AUGUST, 1981

TIES

HUGH E. HALDERMAN
RCE 8793

SET CONC NAIL
IN TOP AC BERM



X FD. Ramset Nail on T/C
 ■ FD. "C" Nail on T/C

● FD. LD. & TK. on T/C
 ○ Set LD. & TK. on T/C

FIELD CD
 10-1-81
 J.W.S.

Street: **MADERA WAY**
 8383 TIF
 X-Street: **Wily of Yukon Way**
 OFFICIAL USE ONLY

Scale:
 Date:
 Drawn by:
 W.O.:
 F.B.:

OFFICIAL TIE PLAT
CITY OF RIVERSIDE

These ties are for the purpose of perpetuating the found monumentation. No claim is made as to the relationship of the points or lines shown hereon to true boundary locations.

Sheet 1 of 1
 File No.: