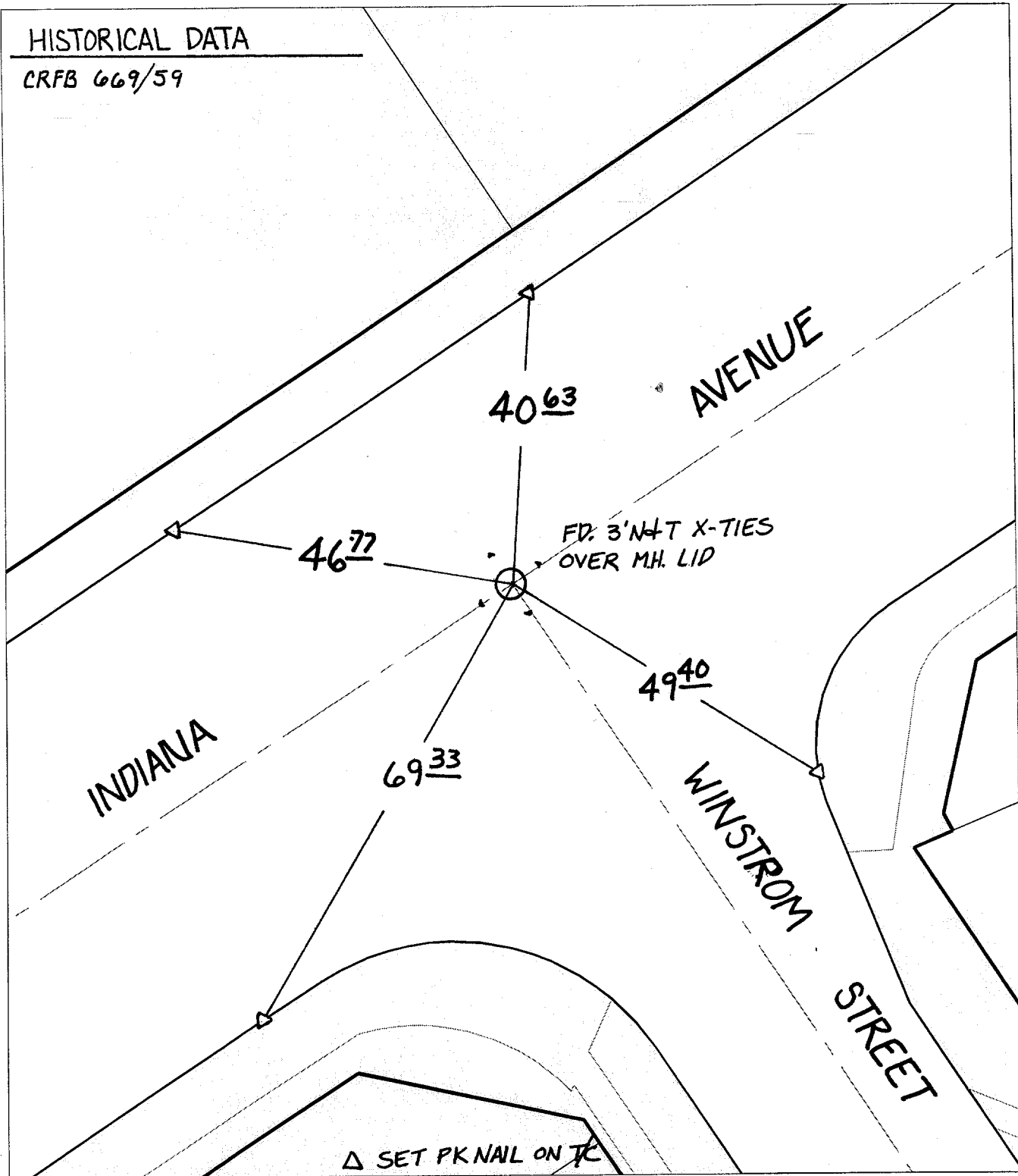


# SWING TIES

**HISTORICAL DATA**

CRFB 669/59



Street: **INDIANA AVENUE**  
*8409 TIE*  
 X-Street: **WINSTROM STREET**  
 OFFICIAL USE ONLY

△ SET PK NAIL ON TC

- × FD. Ramset Nail on T/C      ● FD. LD. & TK. on T/C
- FD. "C" Nail on T/C      ○ Set LD. & TK. on T/C

*P.K. and City Engineer tag to be set @ surface after street construction is complete. (If possible)*

Scale: 1" = 20'

Date: 11/16/00

Drawn by: SURVEY

W.O.:

F.B.:

## OFFICIAL TIE PLAT

### CITY OF RIVERSIDE

*These ties are for the purpose of perpetuating the found monumentation. No claim is made as to the relationship of the points or lines shown hereon to true boundary locations.*



Sheet 1 of 1

File No.: