

Scale:
Date:
Drawn by:
W.O.:
F.B.:

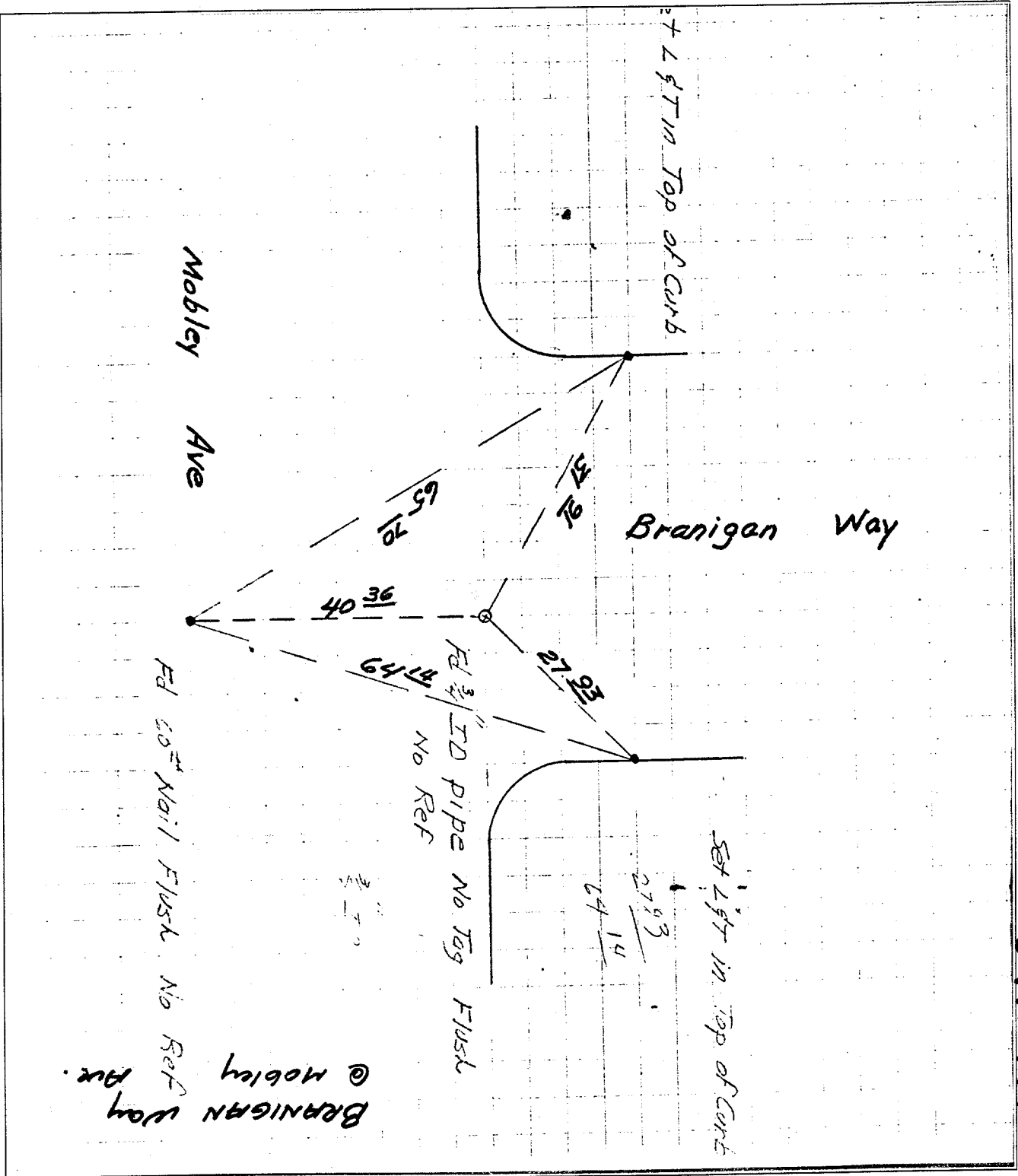
OFFICIAL TIE PLAT

CITY OF RIVERSIDE

These ties are for the purpose of perpetuating the found monumentation. No claim is made as to the relationship of the points or lines shown hereon to true boundary locations.

File No.:
Sheet 1 of 1

- FD. LD. & TK. on T/C
- Set LD. & TK. on T/C
- × FD. Ramset Nail on T/C
- FD. "C" Nail on T/C



Street: BRANIGAN WAY 841.71F X-Street: MOBLEY AVE
OFFICIAL USE ONLY

BRANIGAN Way @ Mobley Ave.
FD 1/2" Nail Flush No Ref

FD 1/2" ID PIPE No Tag Flush
No Ref

Set 1/2" in Top of Curb

Set 1/2" in Top of Curb

841.71F