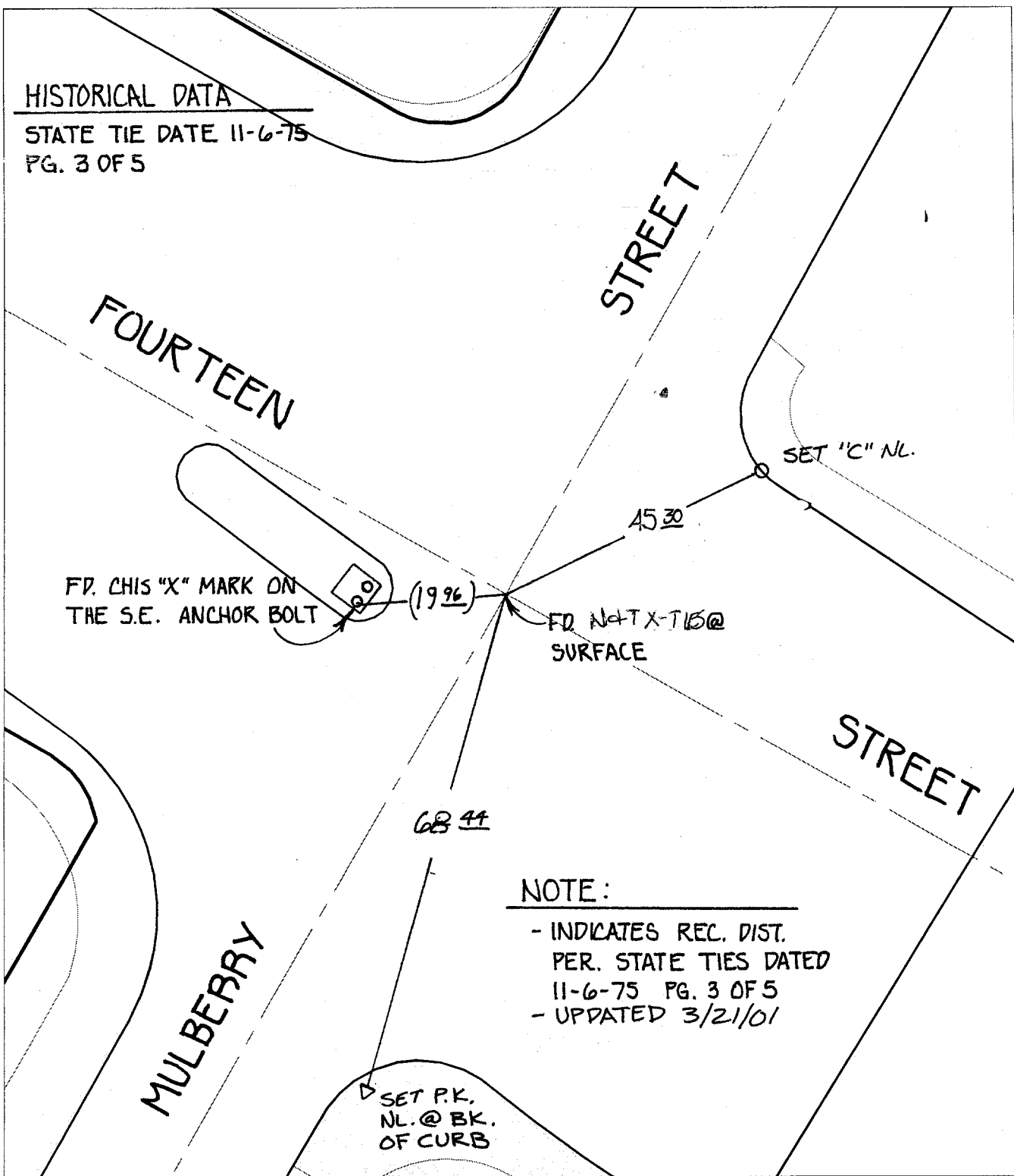


# SWING TIES

HISTORICAL DATA

STATE TIE DATE 11-6-75  
PG. 3 OF 5



FD. THIS "X" MARK ON THE S.E. ANCHOR BOLT

(19.96)

FD. NOT X-TIES @ SURFACE

45.30

SET "C" NL.

68.44

**NOTE:**

- INDICATES REC. DIST. PER. STATE TIES DATED 11-6-75 PG. 3 OF 5
- UPDATED 3/21/01

SET P.K. NL. @ BK. OF CURB

- FD. Ramset Nail on T/C
- FD. LD. & TK. on T/C
- FD. "C" Nail on T/C
- Set LD. & TK. on T/C

P.K. and City Engineer tag to be set @ surface after street construction is complete. (If possible)

Street: **FOURTEENTH STREET** **X-Street: MULBERRY STREET**  
**C-8412.TIE** OFFICIAL USE ONLY

Scale: 1" = 20'  
 Date: 12/09/00  
 Drawn by: SURVEY  
 W.O.:  
 F.B.:

## OFFICIAL TIE PLAT CITY OF RIVERSIDE

*These ties are for the purpose of perpetuating the found monumentation. No claim is made as to the relationship of the points or lines shown hereon to true boundary locations.*



Sheet 1 of 1  
 File No.: