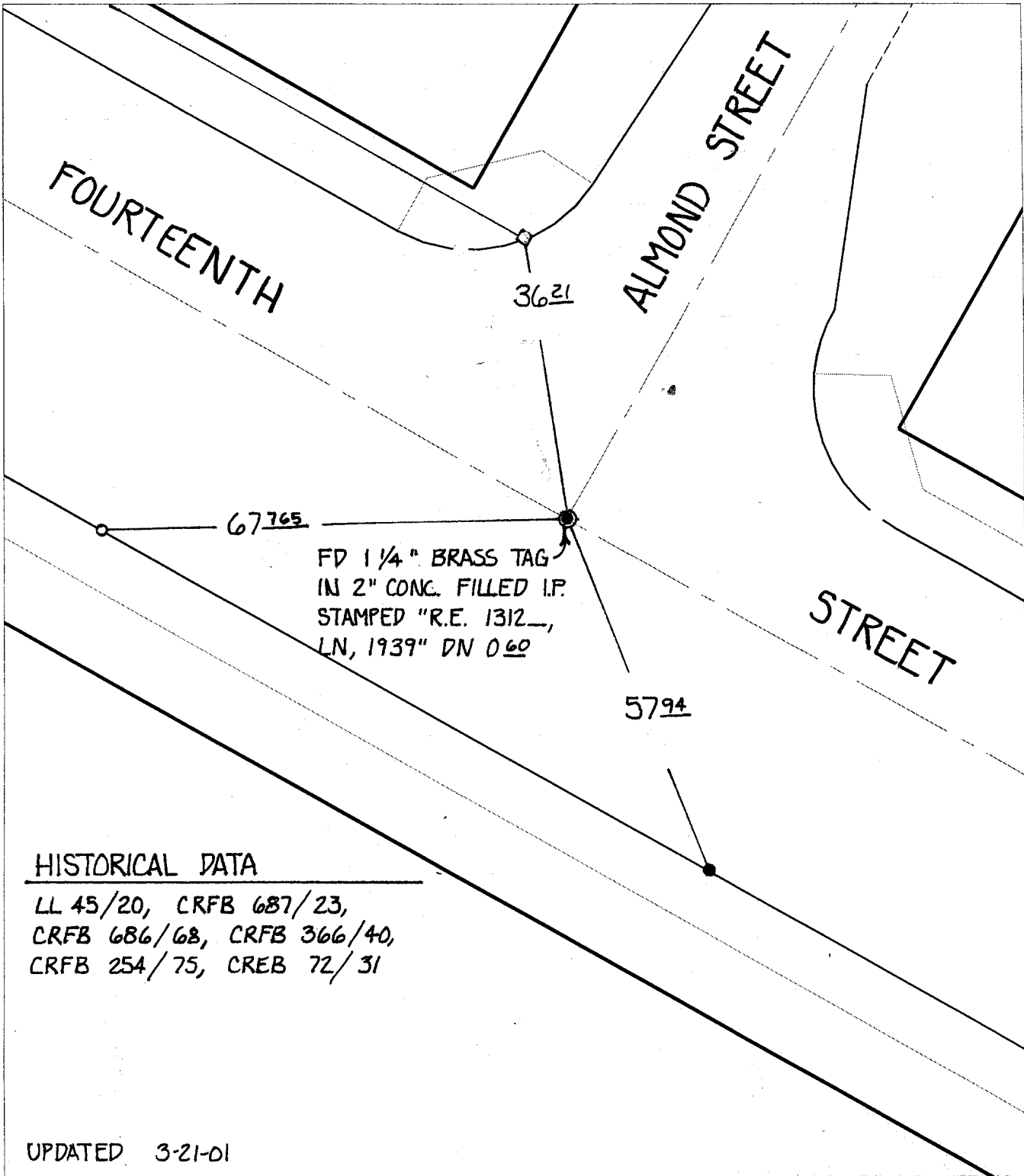


SWING ~~TRANSIT~~ TIES



Street: **C-8418, TIF**
FOURTEENTH STREET
 X-Street: **ALMOND STREET**
 OFFICIAL USE ONLY

HISTORICAL DATA

LL 45/20, CRFB 687/23,
 CRFB 686/68, CRFB 366/40,
 CRFB 254/75, CREB 72/31

UPDATED 3-21-01

- ✕ FD. Ramset Nail on T/C ● FD. LD. & TK. on T/C P.K. and City Engineer tag to be set @ surface after street construction is complete. (If possible)
- FD. "C" Nail on T/C ○ Set LD. & TK. on T/C

Scale: 1" = 20'
 Date: 11/16/00
 Drawn by: SURVEY
 I.O.:
 B.:

OFFICIAL TIE PLAT CITY OF RIVERSIDE

These ties are for the purpose of perpetuating the found monumentation. No claim is made as to the relationship of the points or lines shown hereon to true boundary locations.



Sheet 1 of 1
 File No.: