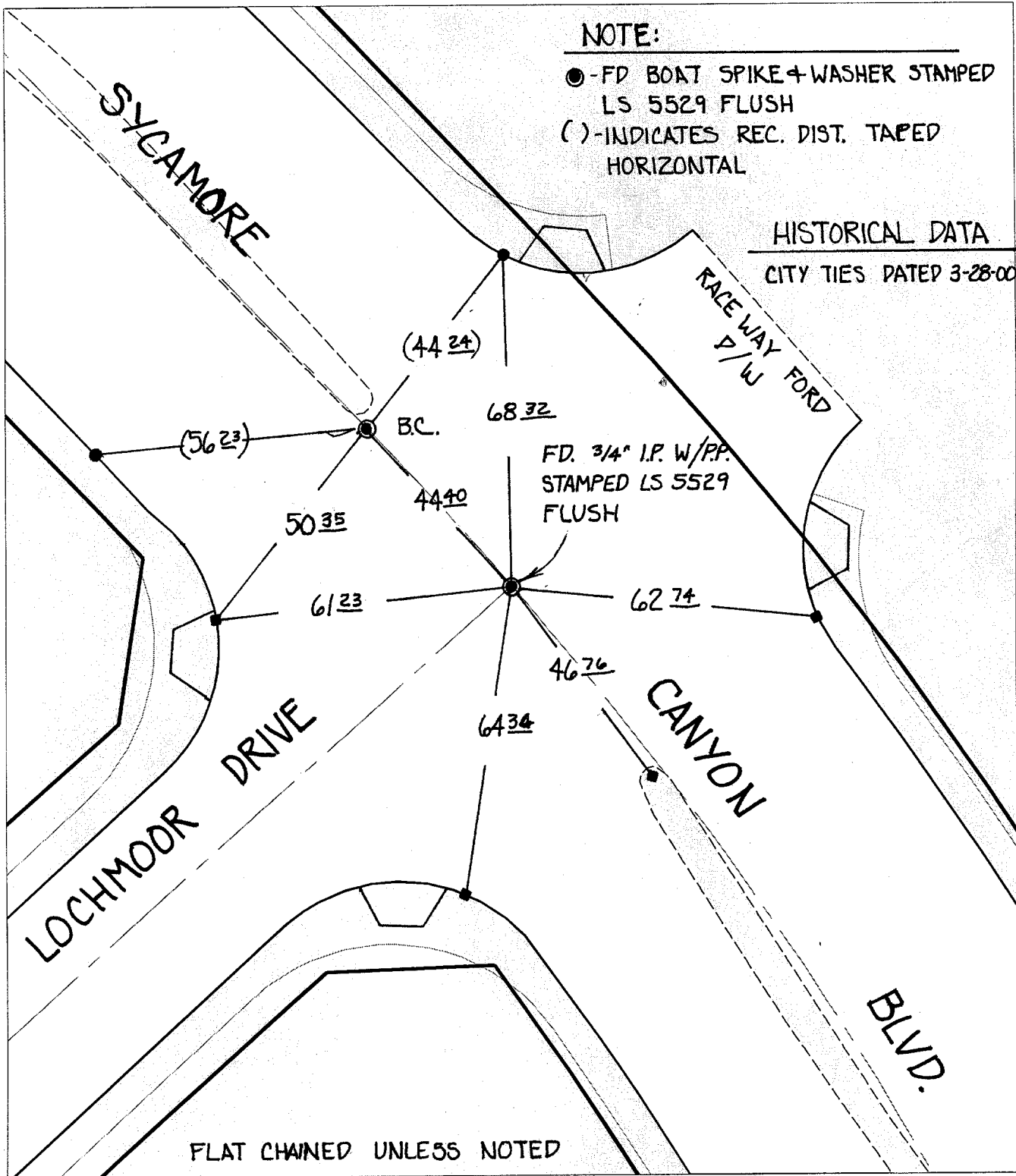


# SWING TIES

**NOTE:**

- - FD BOAT SPIKE + WASHER STAMPED LS 5529 FLUSH
- ( ) - INDICATES REC. DIST. TAPED HORIZONTAL

HISTORICAL DATA  
CITY TIES DATED 3-28-00



FLAT CHAINED UNLESS NOTED

- ×** FD. Ramset Nail on T/C
- FD. LD. & TK. on T/C
- P.K. and City Engineer tag to be set @ surface after street construction is complete. (If possible)*
- FD. "C" Nail on T/C
- Set LD. & TK. on T/C

Street: **8424.71F** SYCAMORE CANYON BLVD. X-Street: LOCHMOOR DRIVE  
 OFFICIAL USE ONLY

Scale: 1" = 30'  
 Date: 12/27/00  
 Drawn by: scurtis  
 W.O.:  
 F.B.:

**OFFICIAL TIE PLAT**  
**CITY OF RIVERSIDE**

*These ties are for the purpose of perpetuating the found monumentation. No claim is made as to the relationship of the points or lines shown hereon to true boundary locations.*

Sheet 1 of 1  
 File No.: