

Street: 8449.71E MADRID CT
X-Street: MADRID CT
CUL-DE-SAC
OFFICIAL USE ONLY

F.B.:
W.O.:
Drawn by: scurtis *AE*
Date: 09/16/98
Scale: 1" = 20'

OFFICIAL TIE PLAT

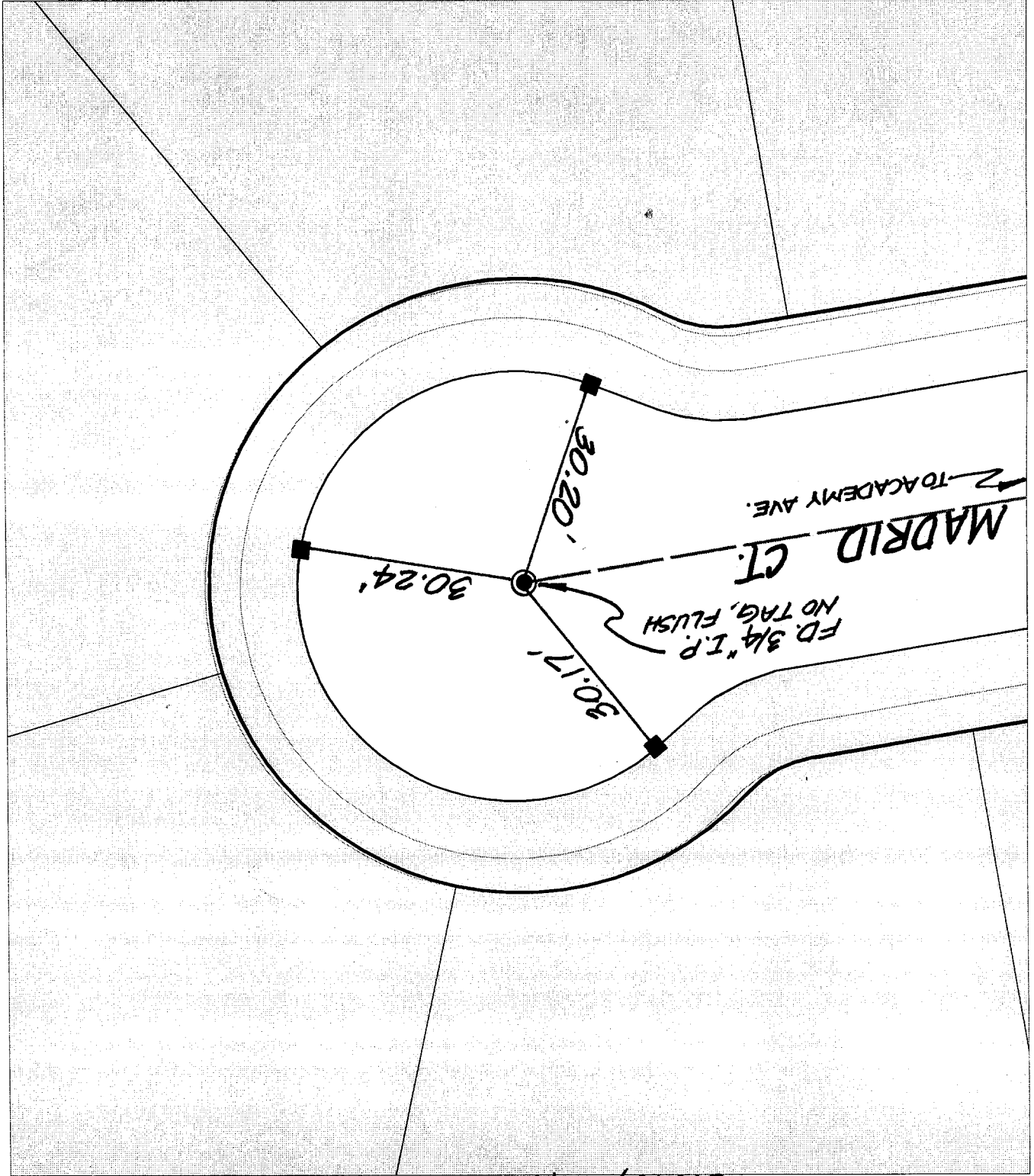
CITY OF RIVERSIDE

These ties are for the purpose of perpetuating the found monumentation. No claim is made as to the relationship of the points or lines shown hereon to true boundary locations.



File No.:
Sheet 1 of 1

- × FD. Ramset Nail on T/C
- FD. "C" Nail on T/C
- FD. LD. & TK. on T/C
- Set LD. & TK. on T/C



"SWING TIES"