

Street: **ACADEMY** X-Street: **THISTLE CT**
8453.71E OFFICIAL USE ONLY

Scale: 1" = 20'

Date: 09/16/98

Drawn by: scurtis, ke

W.O.:

F.B.:

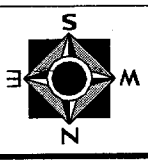
OFFICIAL TIE PLAT

CITY OF RIVERSIDE

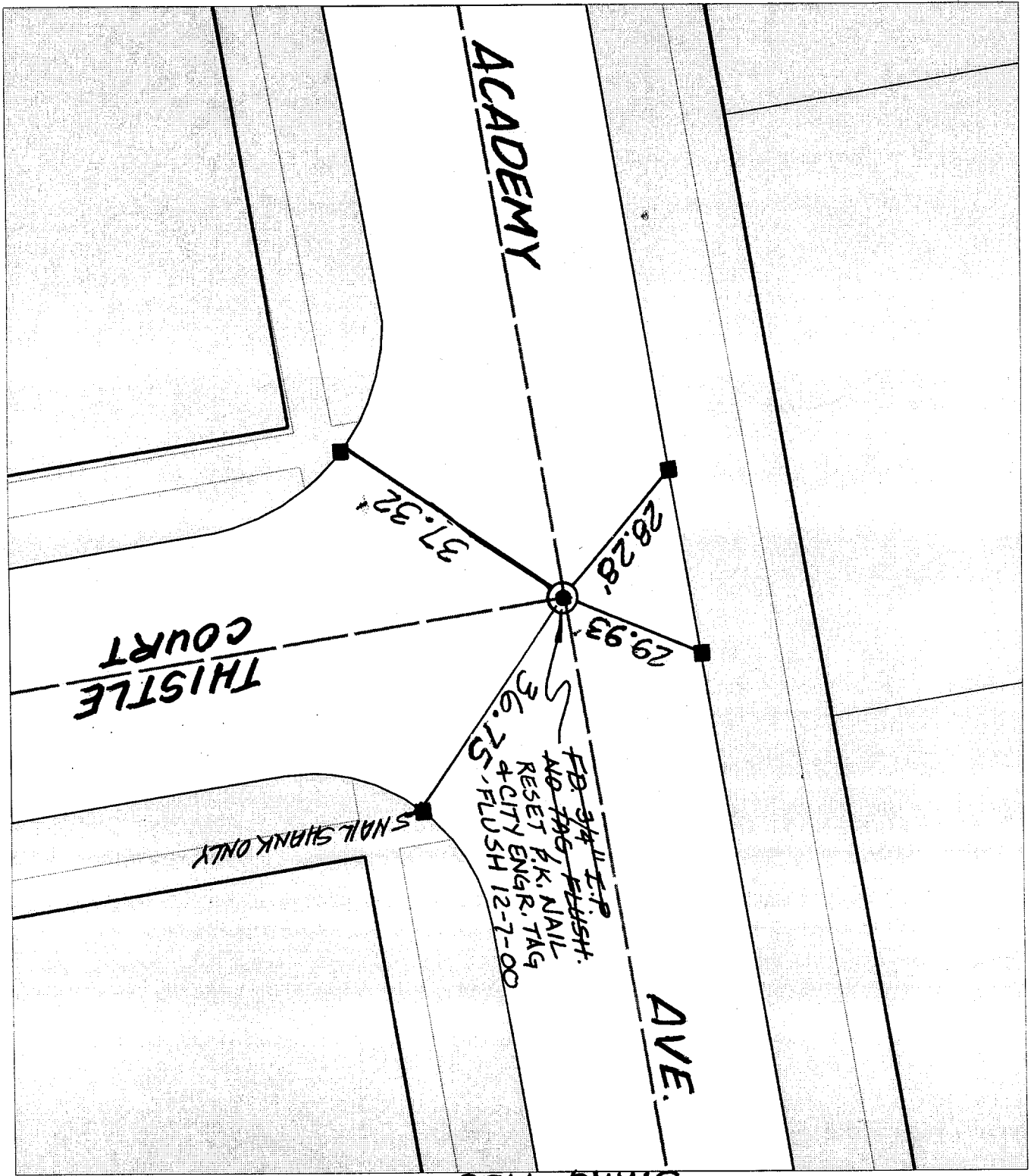
These ties are for the purpose of perpetuating the found monumentation. No claim is made as to the relationship of the points or lines shown hereon to true boundary locations.

File No.:

Sheet 1 of 1



- × FD. Ramset Nail on T/C
- FD. "C" Nail on T/C
- FD. LD. & TK. on T/C
- Set LD. & TK. on T/C



SWING TIES