

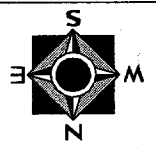
Street: **8454, 71E** ACADEMY
 X-Street: MADRID CT
 OFFICIAL USE ONLY

Scale: 1" = 20'
 Date: 09/16/98
 Drawn by: scurtis *KGE*
 W.O.:
 F.B.:

OFFICIAL TIE PLAT

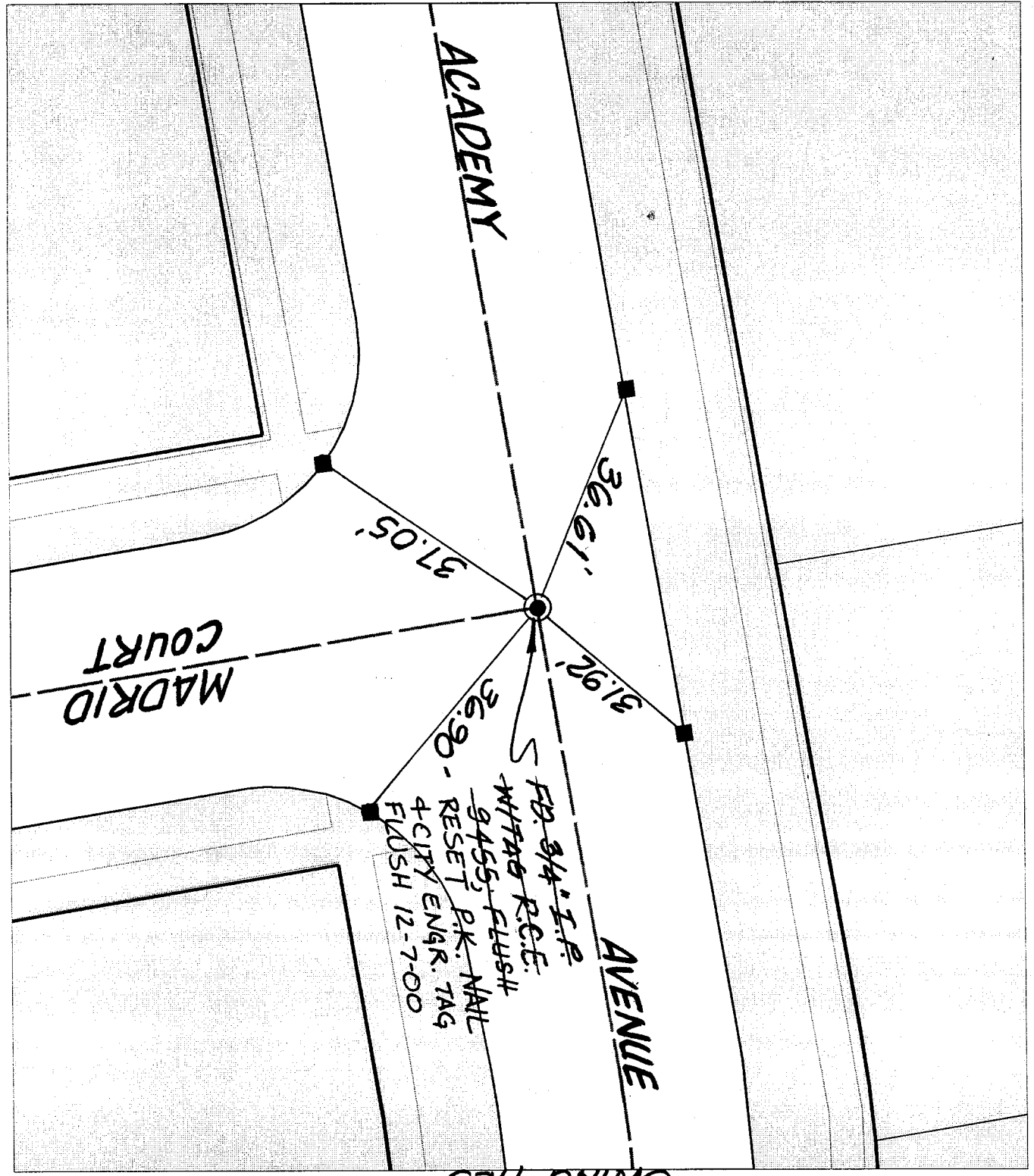
CITY OF RIVERSIDE

These ties are for the purpose of perpetuating the found monumentation. No claim is made as to the relationship of the points or lines shown hereon to true boundary locations.



File No.:
 Sheet 1 of 1

- ✕ FD. Ramset Nail on T/C
- FD. "C" Nail on T/C
- FD. LD. & TK. on T/C
- Set LD. & TK. on T/C



"SWING TIES"
 S
 FD. 3/4" I.P.
 W/TAG R.C.E.
 9455, FLUSH
 RESET PK. NAIL
 4-CITY ENGR. TAG
 FLUSH 12-7-00

ACADEMY

AVENUE

MADRID COURT

37.05'

36.61'

31.92'

36.90'