

Street: **ACADEMY** X-Street: **BC, EC, PRC N'LY OF MADRID**
8455 T/F OFFICIAL USE ONLY

Scale: 1" = 20'

Date: 09/16/98

Drawn by: scurtis

W.O.:

F.B.:

OFFICIAL TIE PLAT

CITY OF RIVERSIDE

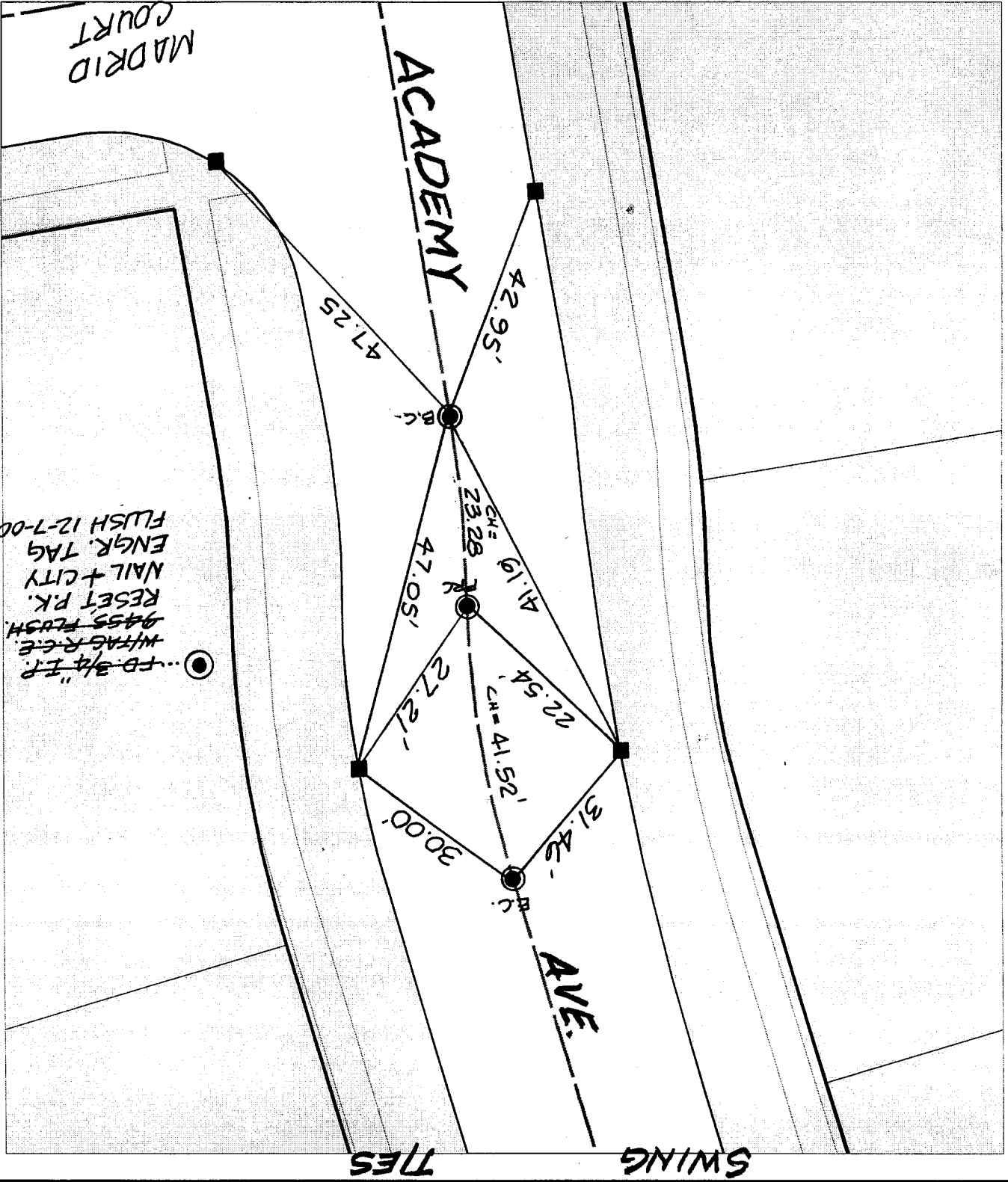
These ties are for the purpose of perpetuating the found monumentation. No claim is made as to the relationship of the points or lines shown hereon to true boundary locations.

File No.:

Sheet 1 of 1



- × FD. Ramset Nail on T/C
- FD. "C" Nail on T/C
- FD. LD. & TK. on T/C
- Set LD. & TK. on T/C



●...FD-3/4" I.P.
 W/TAG R.C.E.
 9455 FLUSH.
 RESET P.K.
 NAIL + CITY
 ENGR. TAG
 FLUSH 12-7-00

MADRID COURT

SWING TIES