

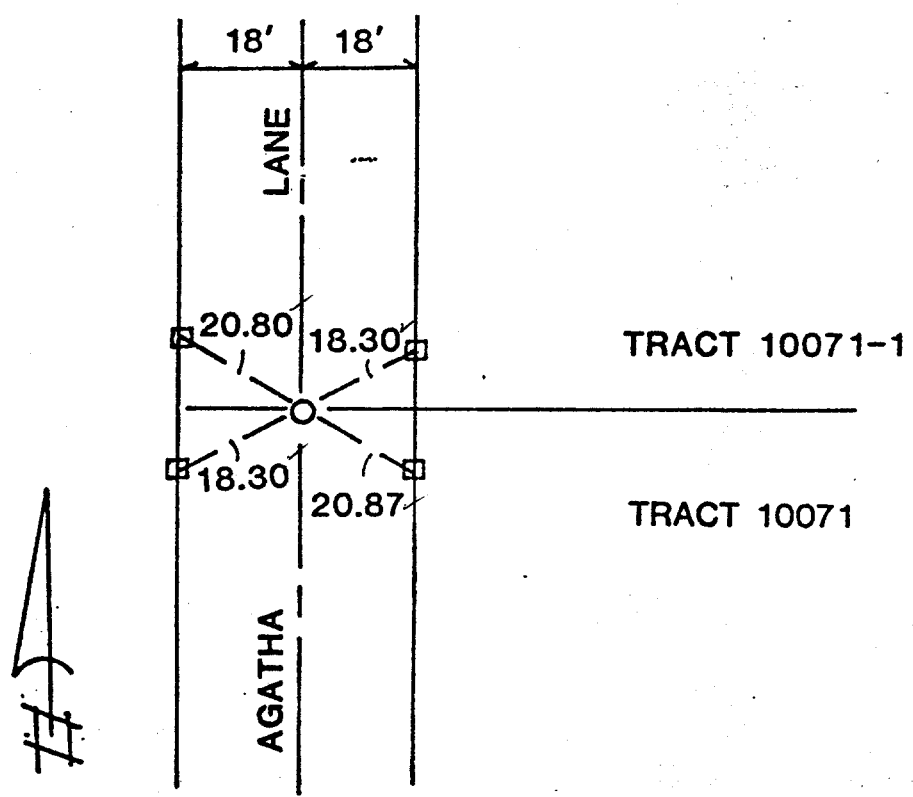
STREET AGATHA LANE X-STREET MINERYA CT
OFFICE USE ONLY

85.71F

CENTERLINE TIES

TRACT 10071-1 AUG. 1983
BET. MINERYA CT. & AGATHA CT.
S'LY TRACT BDRY. AT AGATHA LANE

- Indicates set 1" I.P. tagged RCE 23056 flush
- Indicates set lead & tack in curb



- ✕ FD. Ramset Nail on T/C
- FD. LD. & TK. on T/C
- FD. "C" Nail on T/C
- SET LD. & TK. On T/C

SCALE:
DATE:
DR. BY:
W.O.:
F.B.:

OFFICIAL TIE PLAT
CITY OF RIVERSIDE

These ties are for the purpose of perpetuating the found monumentation. No claim is made as to the relationship of the points or lines shown hereon to true boundary locations.

SHEET

OF SHEETS

FILE NO.: