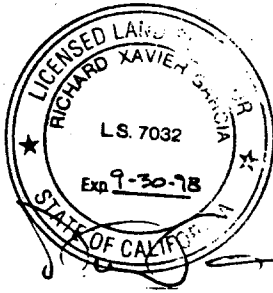


Street: **ROSEDALE DR.**

OFFICIAL USE ONLY

X-Street: **BAYSHORE LN.**

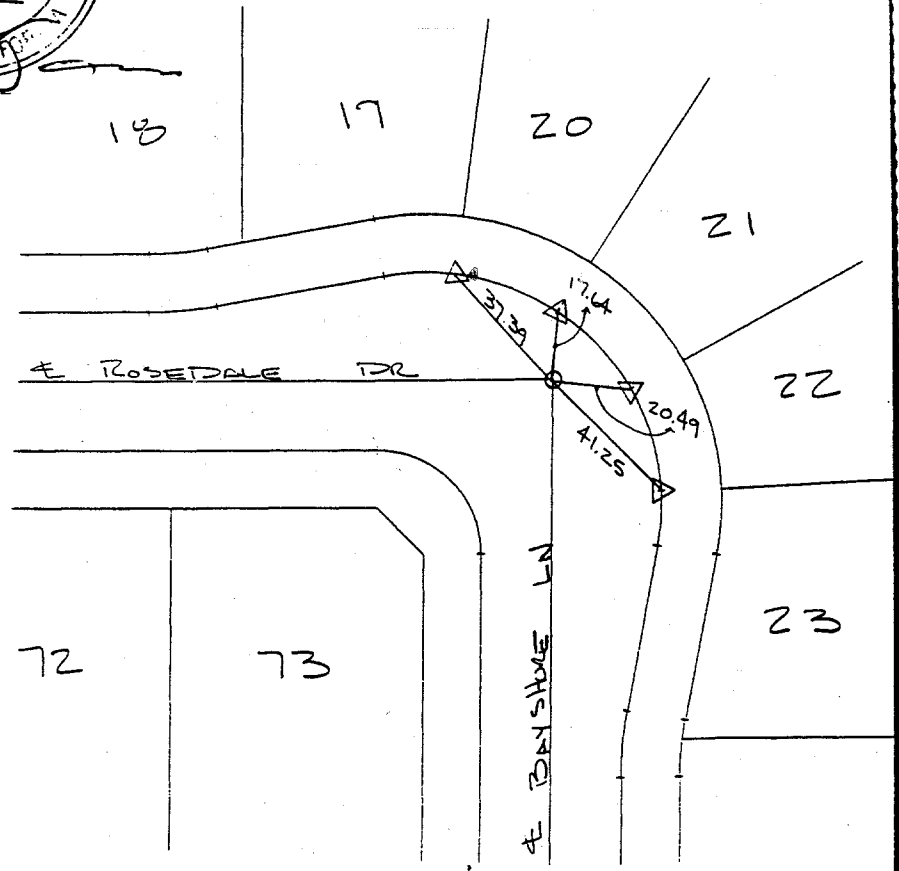
8552.TIF



TRACT 22653-2

BAYSHORE
X-STREET
OFFICE USE ONLY

ROSEDALE
STREET



NOTES

- O - SET BOLT SPIKE & WASHER STAMPED L.S. 4623
- △ - FD NAIL V/ L.S. 4623 TAG ON TOP OF CURB
- ▲ - SET BRASS NAIL IN LEAD TOP OF CURB

SCALE: 40'
 DATE: 3-4-97
 DR. BY: F.P.
 W.O.: 9513251
 F.B.: 13251/

OFFICIAL TIE PLAT
 CITY OF RIVERSIDE
 PREPARED BY: **JFD** J.F. Davidson Associates, Inc.
ENGINEERING • PLANNING • SURVEYING • LANDSCAPE ARCHITECTURE
 1777 Atlanta, Ste. G-5 • Riverside, CA 92507
 P. O. Box 493 • Riverside, CA 92501 (909) 686-0844 • FAX (909) 686-5954

SHEET
 3
 OF 10 SHEETS
 FILE NO.:

- ✕ FD. Ramset Nail on T/C
- FD. LD. & TK. on T/C
- FD. "C" Nail on T/C
- Set LD. & TK. on T/C

Scale:
 Date:
 Drawn by:
 W.O.:
 F.B.:

OFFICIAL TIE PLAT
 CITY OF RIVERSIDE
These ties are for the purpose of perpetuating the found monumentation. No claim is made as to the relationship of the points or lines shown hereon to true boundary locations.

Sheet 1 of 1
 File No.: