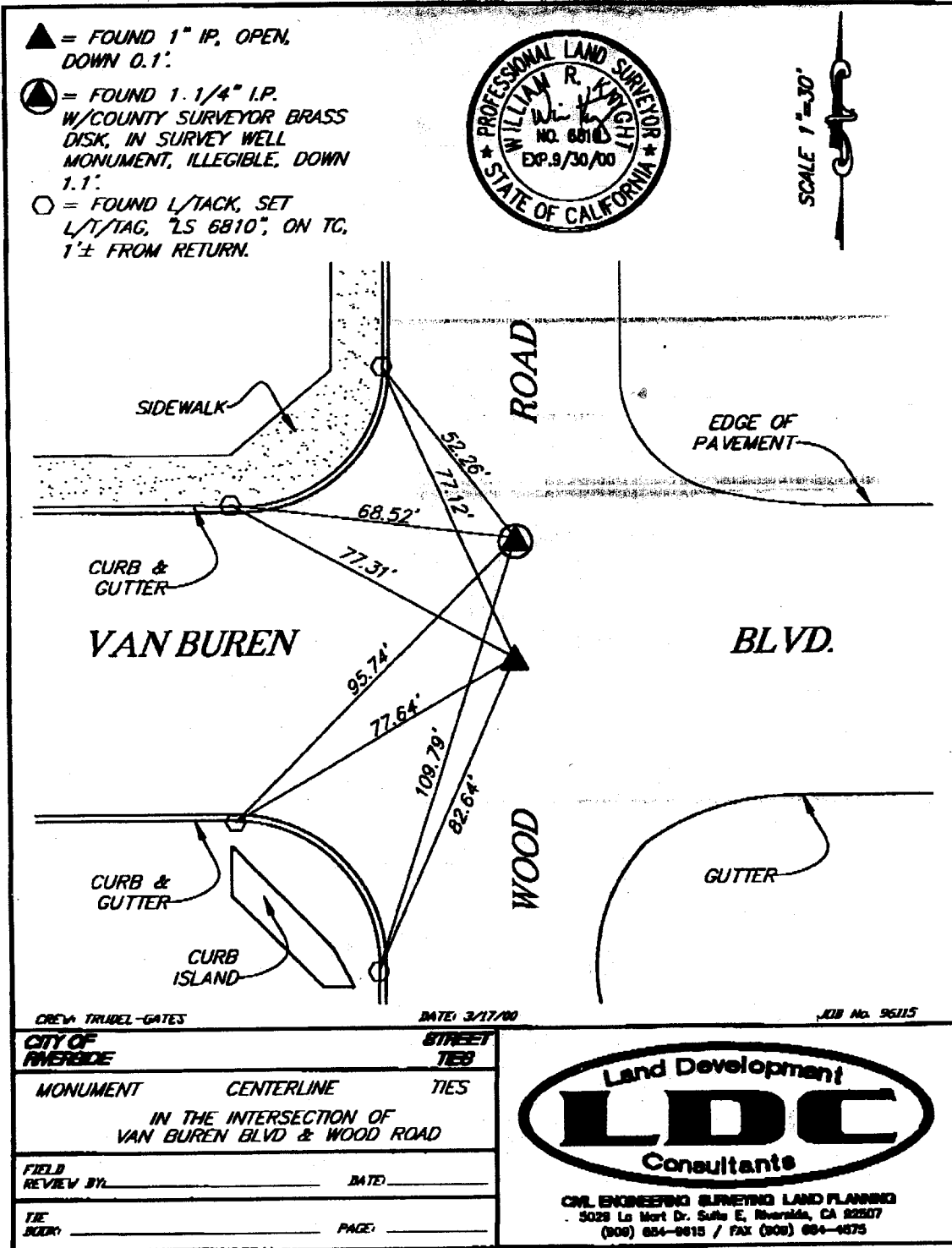


Street: **VAN BUREN BLVD.** X-Street: **WOOD RD.**  
**8585 TIF** OFFICIAL USE ONLY



- ▲ = FOUND 1" IP, OPEN, DOWN 0.1'
- = FOUND 1.1/4" I.P. W/COUNTY SURVEYOR BRASS DISK, IN SURVEY WELL MONUMENT, ILLEGIBLE, DOWN 1.1'
- = FOUND L/TACK, SET L/T/TAG, 7S 6810', ON TC, 1'± FROM RETURN.

CREW TRUDEL-GATES		DATE: 3/17/00	JOB No. 96115
CITY OF RIVERSIDE	STREET TIES		
MONUMENT	CENTERLINE	TIES	
IN THE INTERSECTION OF VAN BUREN BLVD & WOOD ROAD			
FIELD REVIEW BY:	DATE:		
TIE BOOK:	PAGE:		

**Land Development**  
**LDC**  
**Consultants**

CIVIL ENGINEERING SURVEYING LAND PLANNING  
 3025 La Motte Dr. Suite E, Riverside, CA 92507  
 (908) 684-6615 / FAX (908) 684-4875

- × FD. Ramset Nail on T/C
- FD. LD. & TK. on T/C
- FD. "C" Nail on T/C
- Set LD. & TK. on T/C

Scale:  
 Date:  
 Drawn by:  
 W.O.:  
 F.B.:

**OFFICIAL TIE PLAT**  
**CITY OF RIVERSIDE**

These ties are for the purpose of perpetuating the found monumentation. No claim is made as to the relationship of the points or lines shown hereon to true boundary locations.

Sheet 1 of 1  
 File No.: