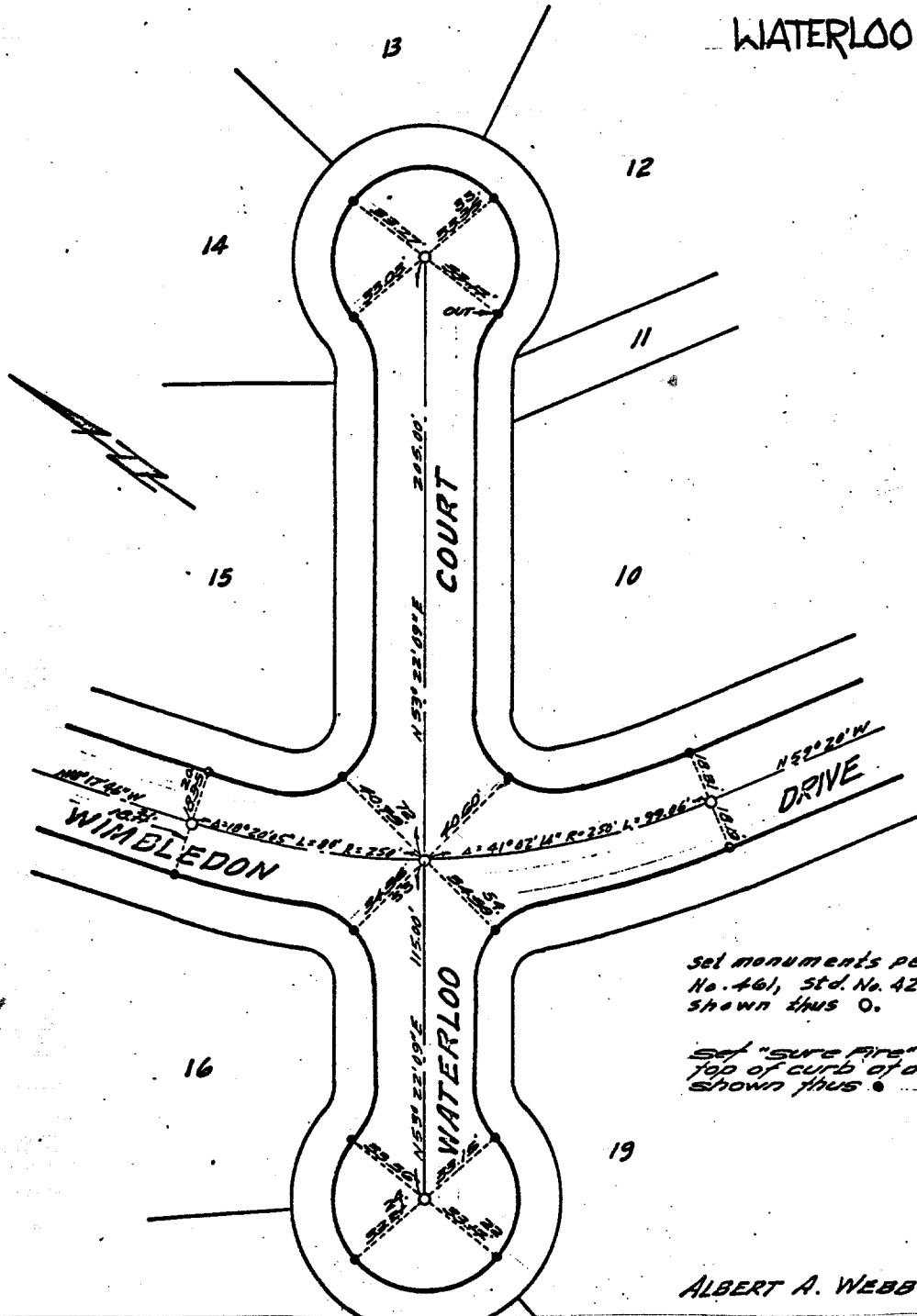


Being a subdivision of a portion of the
N/2 of Section 6, T.35., R.4W., S. B.B. & M.

WATERLOO CT.



Set monuments per Ordinance
No. 461, Std. No. 42 at all points
shown thus ○.

Set "sure fire" studs in
top of curb at all points
shown thus ●.

THE SMT
@ Wimbledon

ALBERT A. WEBB ASSOC.

- × FD. Ramset Nail on T/C
- FD. "C" Nail on T/C

- FD. LD. & TK. on T/C
- Set LD. & TK. on T/C

Street: WATERLOO CT.
8629.71E
OFFICIAL USE ONLY
X-Street: WIMBLEDON DRIVE

Scale:
Date:
Drawn by:
W.O.: 64 270
F.B.: 675/11

OFFICIAL TIE PLAT
CITY OF RIVERSIDE

These ties are for the purpose of perpetuating the found
monumentation. No claim is made as to the relationship of
the points or lines shown hereon to true boundary locations.

TRACT 3874

Sheet 3 of 4
File No.: