

Street: **WATKINS DRIVE**  
**8628 TIF**

X-Street: **CENTRAL AVE**  
 OFFICIAL USE ONLY

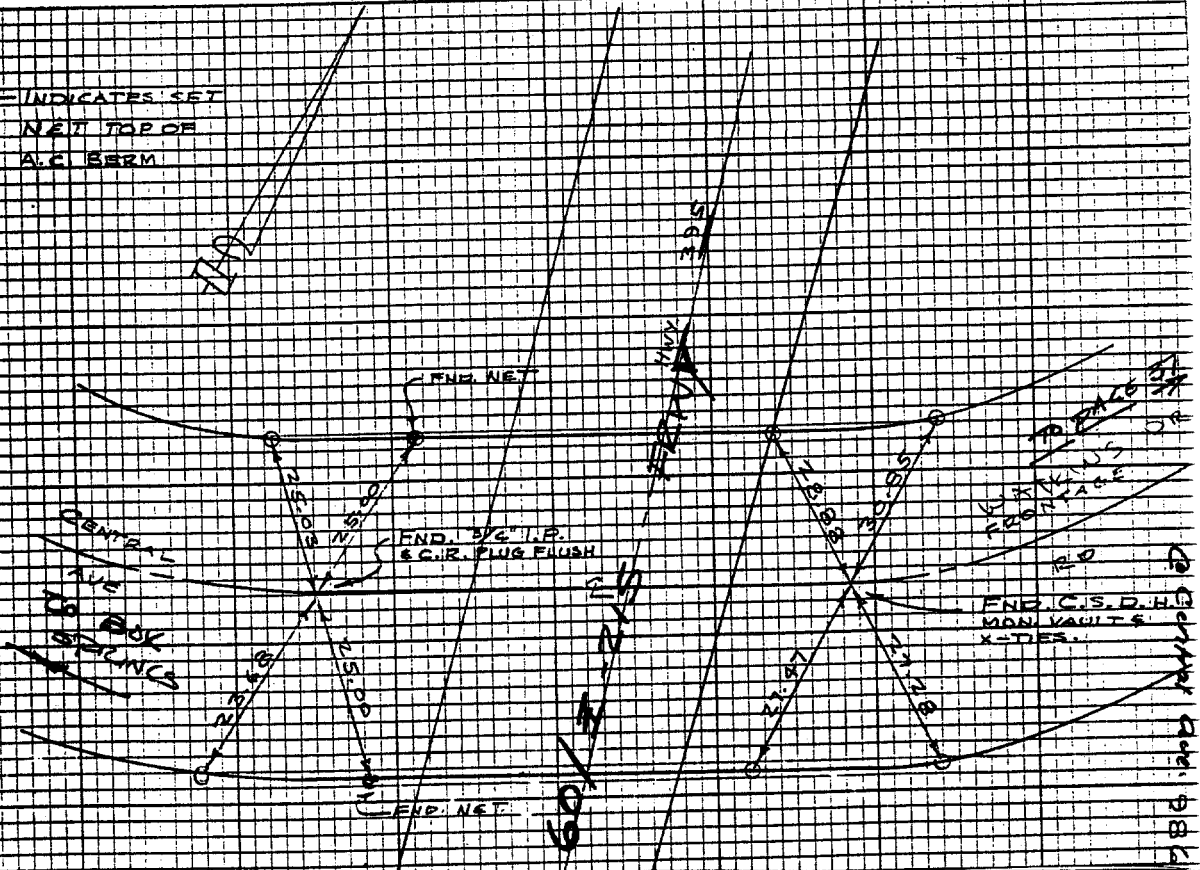
HUNT  
 EWING  
 CONNER  
 FEB. 5, 1976

TRANSIT TIES

WATKINS  
 CENTRAL AVE  
 FRONTAGE RD  
 E.C.E.B.C.  
 ELY. OF BOX  
 SPRINGS RD.

HISTORICAL DATA

O=INDICATES SET  
 NEW TAP OR  
 A.C. BERM



- ✕ FD. Ramset Nail on T/C
- FD. "C" Nail on T/C

- FD. LD. & TK. on T/C
- Set LD. & TK. on T/C

Scale:  
 Date:  
 Drawn by:  
 W.O.:  
 F.B.: 986-38

## OFFICIAL TIE PLAT

### CITY OF RIVERSIDE

*These ties are for the purpose of perpetuating the found monumentation. No claim is made as to the relationship of the points or lines shown hereon to true boundary locations.*

Sheet 1 of 1  
 File No.: