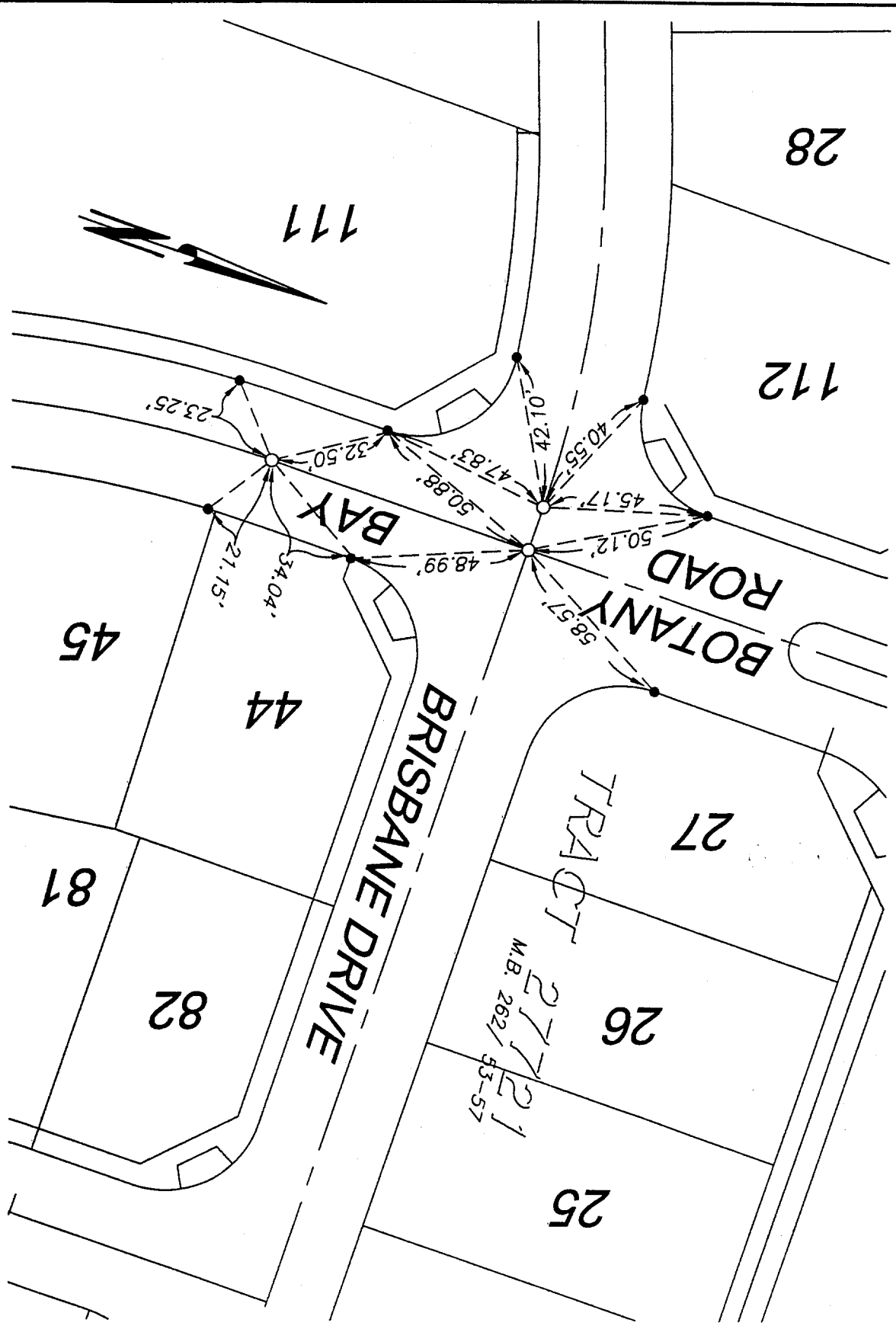


STREET BRISBANE DRIVE BOTANY BAY ROAD

OFFICE USE ONLY

LEGEND

- Set Ramset Nail On T.C.
- △-Set Nail and R.C.E. 17550 Tag in top of concrete curb at the prolongation of side lot lines.
- Set 1/2" Spike w/washer stamped R.C.E. 17550, Flush.



F.I.L. 863. 298

SCALE: N.T.S.
 DATE: 7-10-00
 DR. BY: C.E.G.
 W.O.: 1003-001

--- OFFICIAL TIE PLAT ---
 CITY OF RIVERSIDE

PREPARED BY: C.E.G.
 Carty Engineering Group, Inc.
 CIVIL ENGINEERING PLANNING SURVEYING

2020 IOWA Avenue, Suite 102, Riverside, CA 92507
 P.O. Box 52050, Riverside, CA 92517
 (909) 683-5234 FAX (909) 683-5301

OF 9 SHEETS

3

SHEET