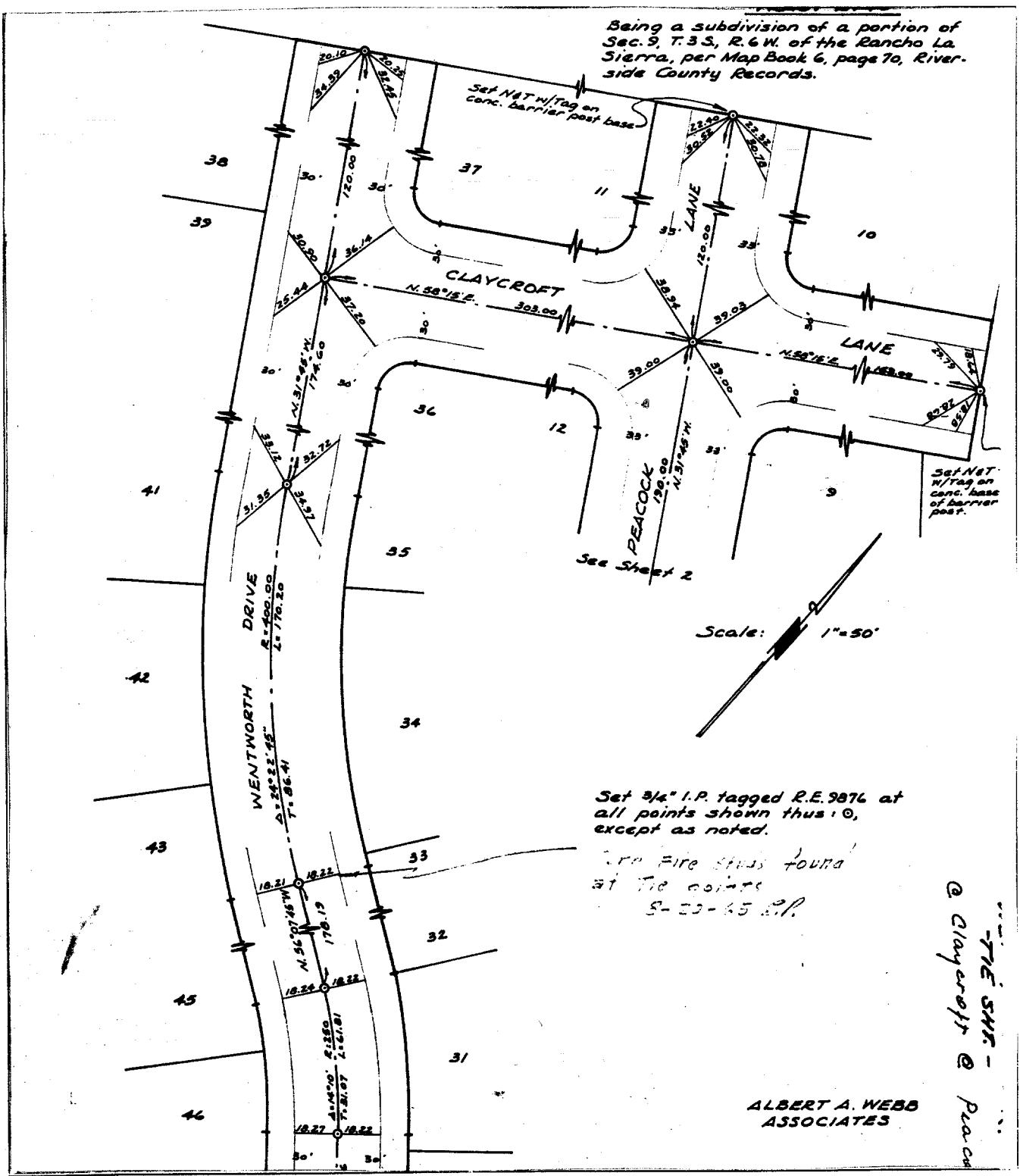


Street: **WENTWORTH DR.**
8555 TIF
 X-Street: **CLAYCROFT LANE**

OFFICIAL USE ONLY

Being a subdivision of a portion of Sec. 9, T.3S., R.6W. of the Rancho La Sierra, per Map Book 6, page 70, Riverside County Records.



- ✕ FD. Ramset Nail on T/C
- FD. LD. & TK. on T/C
- FD. "C" Nail on T/C
- Set LD. & TK. on T/C

Scale:
 Date: **MAY 13 1965**
 Drawn by: **EJD**
 W.O.: **63-183**
 F.B.: **542**

OFFICIAL TIE PLAT
CITY OF RIVERSIDE

These ties are for the purpose of perpetuating the found monumentation. No claim is made as to the relationship of the points or lines shown hereon to true boundary locations.

TR 2740
 Sheet 3 of 4
 File No.: