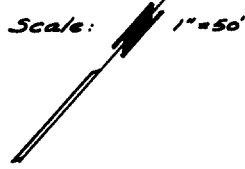
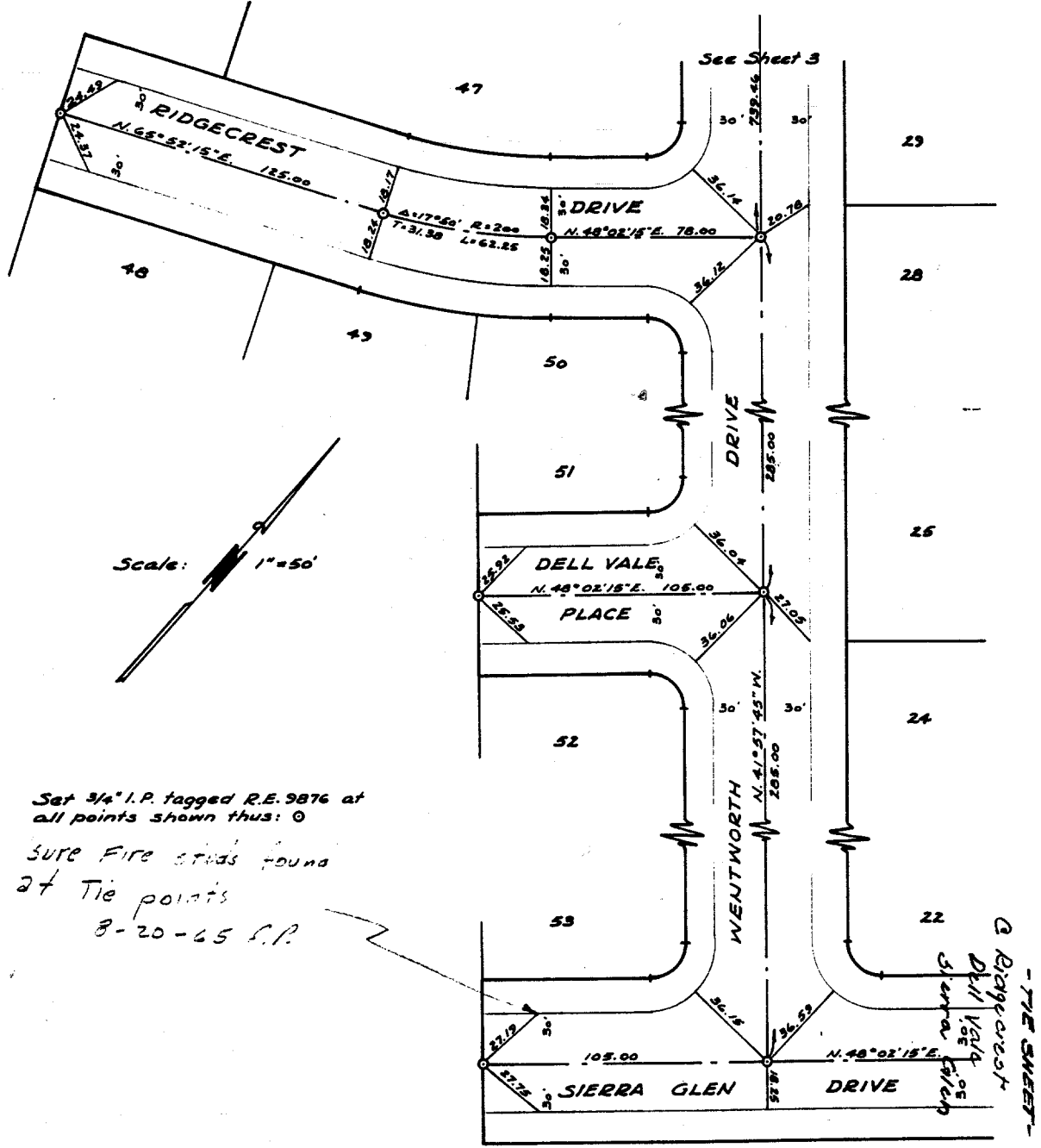


Being a subdivision of a portion of Sec. 9, T.3 S., R.6 W., of Rancho La Sierra per Map Book 6, Page 70, Riverside County Records.



Set 3/4" I.P. tagged R.E. 9876 at all points shown thus: ○  
 Sure Fire studs found at Tie points  
 8-20-65 S.P.

Street: **WENTWORTH DRIVE**  
**8459 T/P**  
 OFFICIAL USE ONLY  
 X-Street: **SIERRA GLEN DRIVE**

ALBERT A. WEBB ASSOCIATES

F.B. 542  
 W.O. 63-183

Drawn by: EJD  
 Date: 13 May 65

- ✕ FD. Ramset Nail on T/C
- FD. LD. & TK. on T/C
- FD. "C" Nail on T/C
- Set LD. & TK. on T/C

Scale:  
 Date:  
 Drawn by:  
 W.O.: 63-183  
 F.B.: 542

**OFFICIAL TIE PLAT**  
 CITY OF RIVERSIDE

*These ties are for the purpose of perpetuating the found monumentation. No claim is made as to the relationship of the points or lines shown hereon to true boundary locations.*

TRACT 2740  
 Sheet 1 of 1  
 File No.: