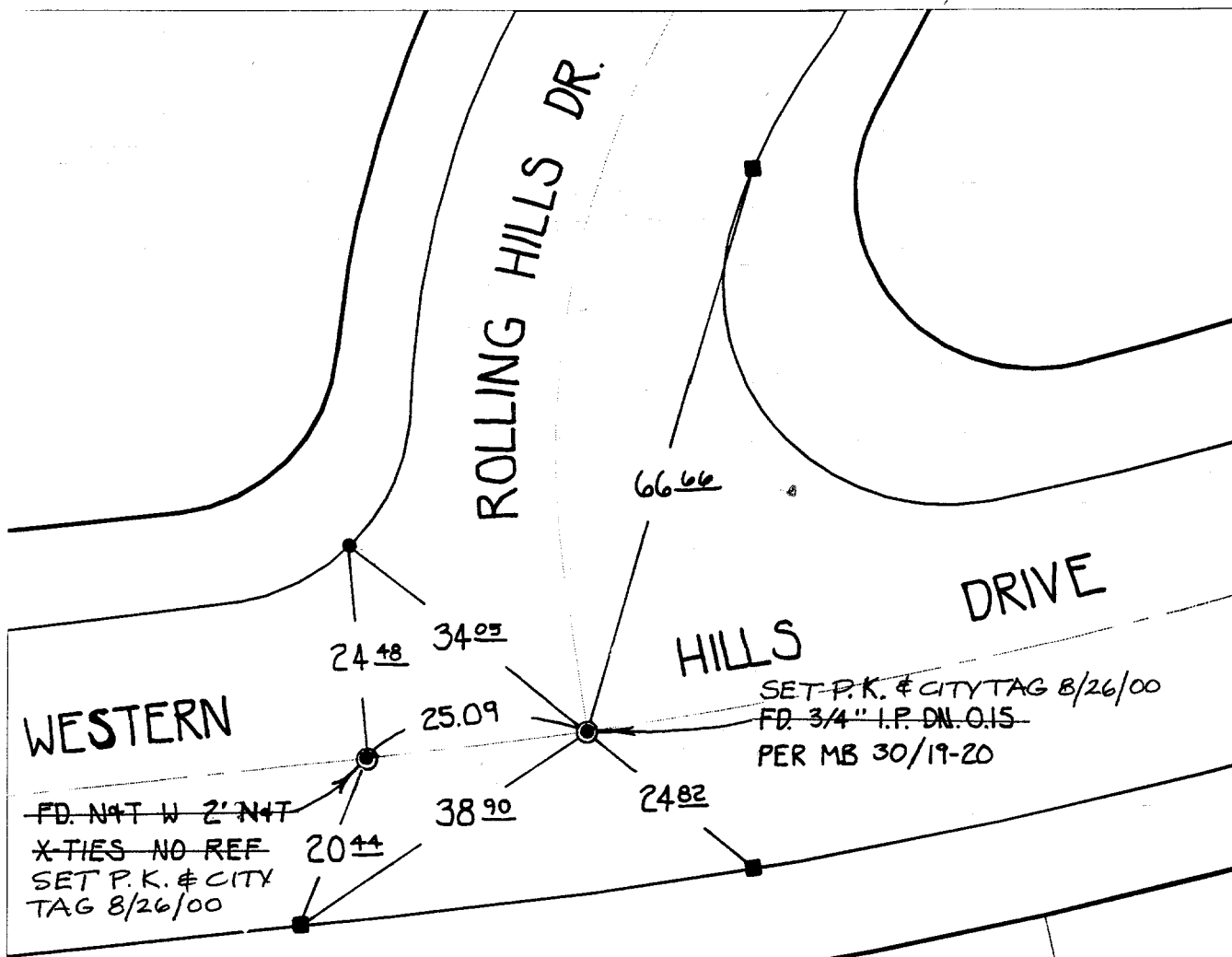


SWING TIES



Street: WESTERN HILLS DRIVE
8626 TIE
 X-Street: ROLLING HILLS DRIVE
 OFFICIAL USE ONLY

HISTORICAL DATA

MB 30/19-20

NOTE

ALL DISTANCES WERE FLAT CHAINED
 *NOTE: P.K. AND CITY ENGINEER TAG TO BE SET @ SURFACE AFTER STREET CONSTRUCTION IS COMPLETE. (IF POSSIBLE)

- ✗ FD. Ramset Nail on T/C
- FD. LD. & TK. on T/C
- FD. "C" Nail on T/C
- Set LD. & TK. on T/C

Scale: 1" = 20'
 Date: 06/23/00
 Drawn by: SURVEY
 W.O.:
 F.B.:

OFFICIAL TIE PLAT CITY OF RIVERSIDE

These ties are for the purpose of perpetuating the found monumentation. No claim is made as to the relationship of the points or lines shown hereon to true boundary locations.



Sheet 1 of 1
 File No.: