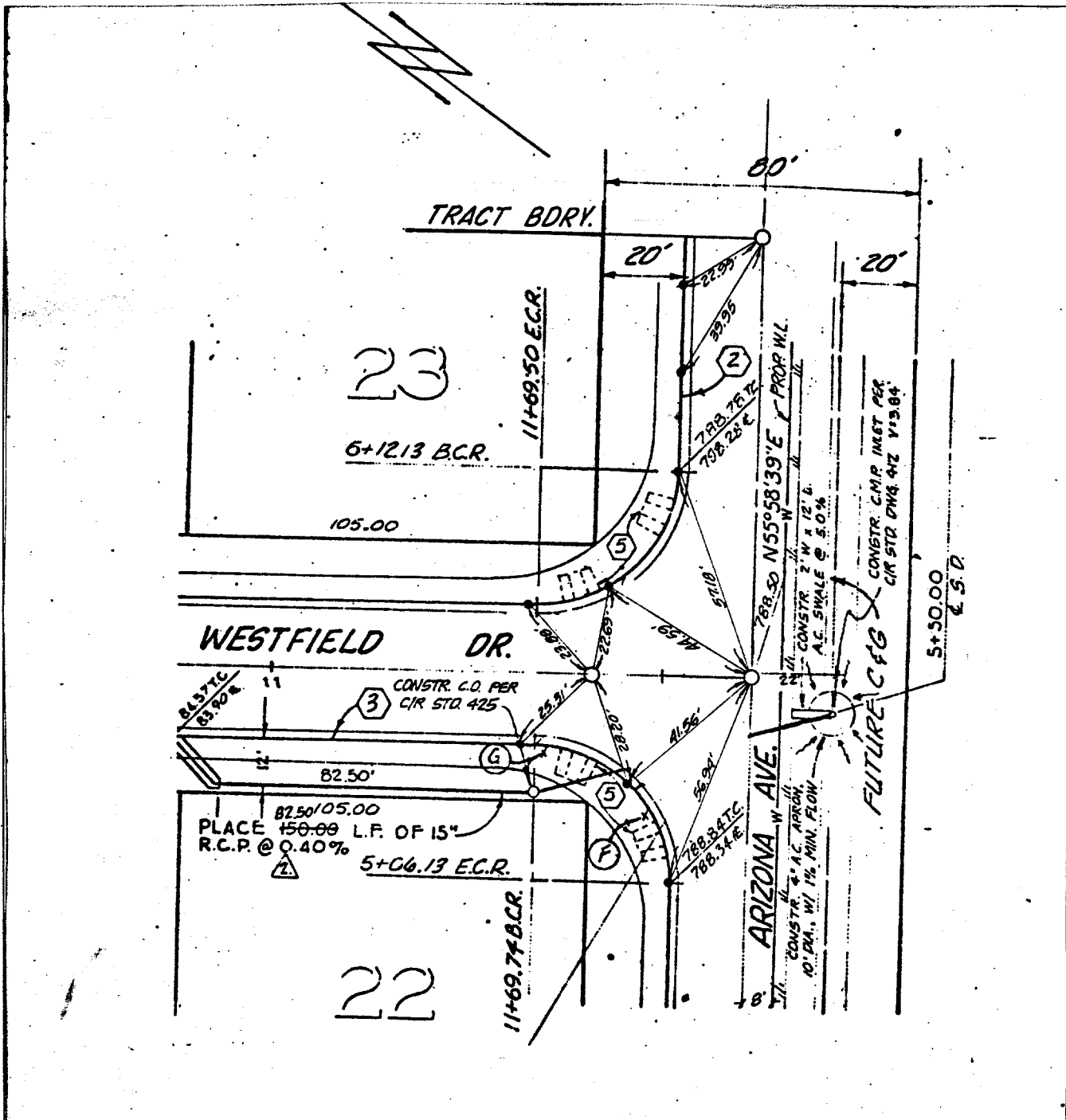


Street: WESTFIELD
8683 TIF

X-Street: ARIZONA AVE
OFFICIAL USE ONLY



J.F. DAVIDSON ASSOCIATES

- Indicates Set Nail on Curb.
- Indicates 3/4" I.P. with plastic plug stamped R.C.E. 862, Flush

- × FD. Ramset Nail on T/C
- FD. LD. & TK. on T/C
- FD. "C" Nail on T/C
- Set LD. & TK. on T/C

Scale:
Date: 2-28-79
Drawn by:
W.O.:
F.B.:

OFFICIAL TIE PLAT
CITY OF RIVERSIDE

These ties are for the purpose of perpetuating the found monumentation. No claim is made as to the relationship of the points or lines shown hereon to true boundary locations.

TRACT 8898-2

Sheet 5 of 6
File No.: