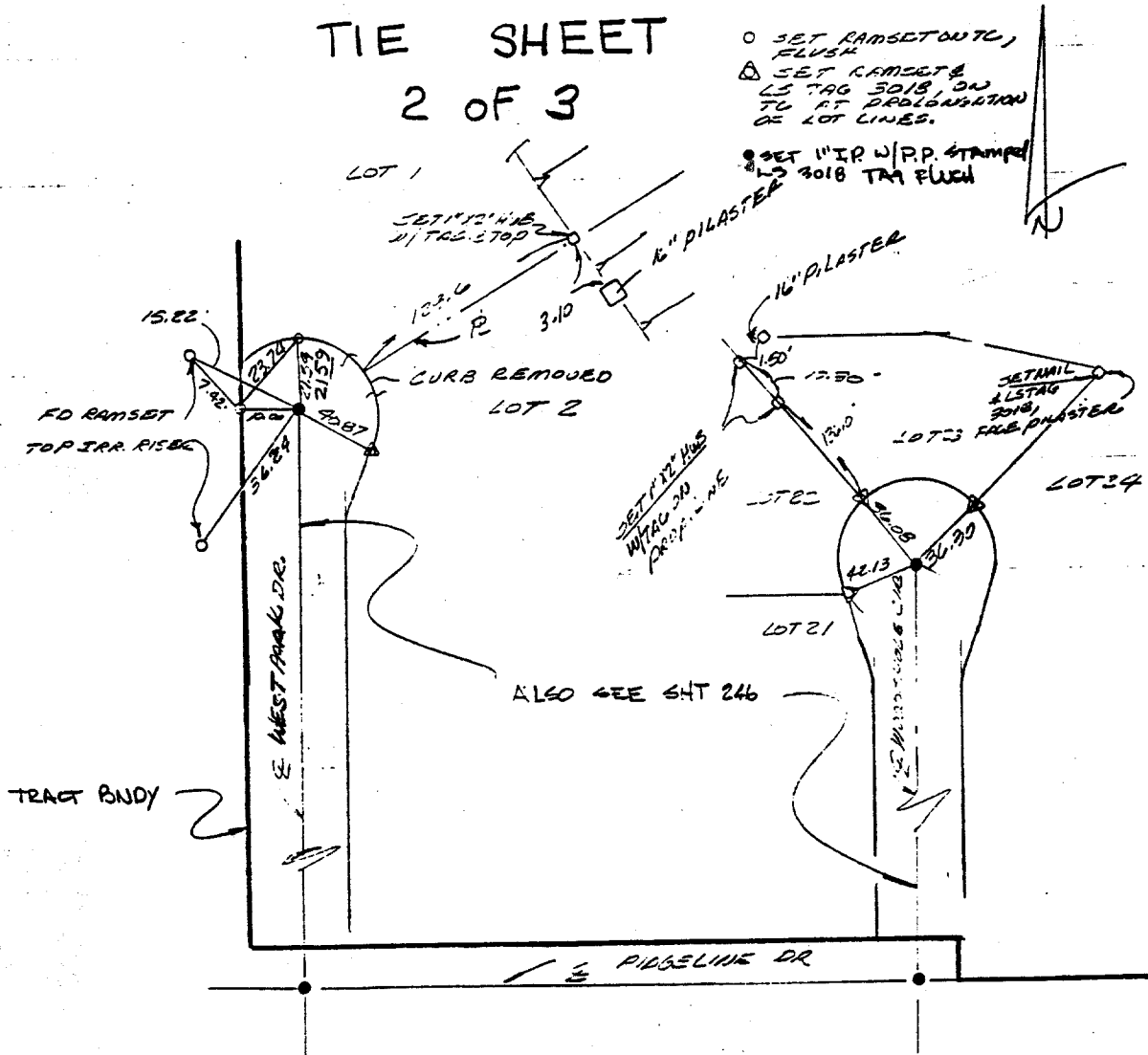


J.F. Davidson Associates, Inc.
ENGINEERING PLANNING SURVEYING
ARCHITECTURE LANDSCAPE ARCHITECTURE

F.B. 9925/282

SURVEY OF TR 22527
FOR FINAL MOUNT W.O. No. 89-9925 Date 6-13-89
SURVEY PARTY PERRA, GARCIA REF. AM.

TIE SHEET
2 OF 3



- SET RAMSET ON T/C, FLUSH
- △ SET RAMSET 4 LS TAG 3018, ON T/C AT PROLONGATION OF LOT LINES.
- SET 1" IP W/PP STAMPED LS 3018 TAG FLUSH

Street: WEST PARK DR
8695 71E

X-Street: OFFICIAL USE ONLY

- ✕ FD. Ramset Nail on T/C
- FD. LD. & TK. on T/C
- FD. "C" Nail on T/C
- Set LD. & TK. on T/C

Scale:
Date:
Drawn by:
W.O.:
F.B.: 9925/282

**OFFICIAL TIE PLAT
CITY OF RIVERSIDE**

These ties are for the purpose of perpetuating the found monumentation. No claim is made as to the relationship of the points or lines shown hereon to true boundary locations.

Sheet **2** of **3**
File No.: