

Street: WESTRIDGE ROAD  
 8712 TIE  
 OFFICIAL USE ONLY  
 X-Street: HORACE & LUCERNE PL.

WESTRIDGE RD.

@ Horace  
 Lucerne

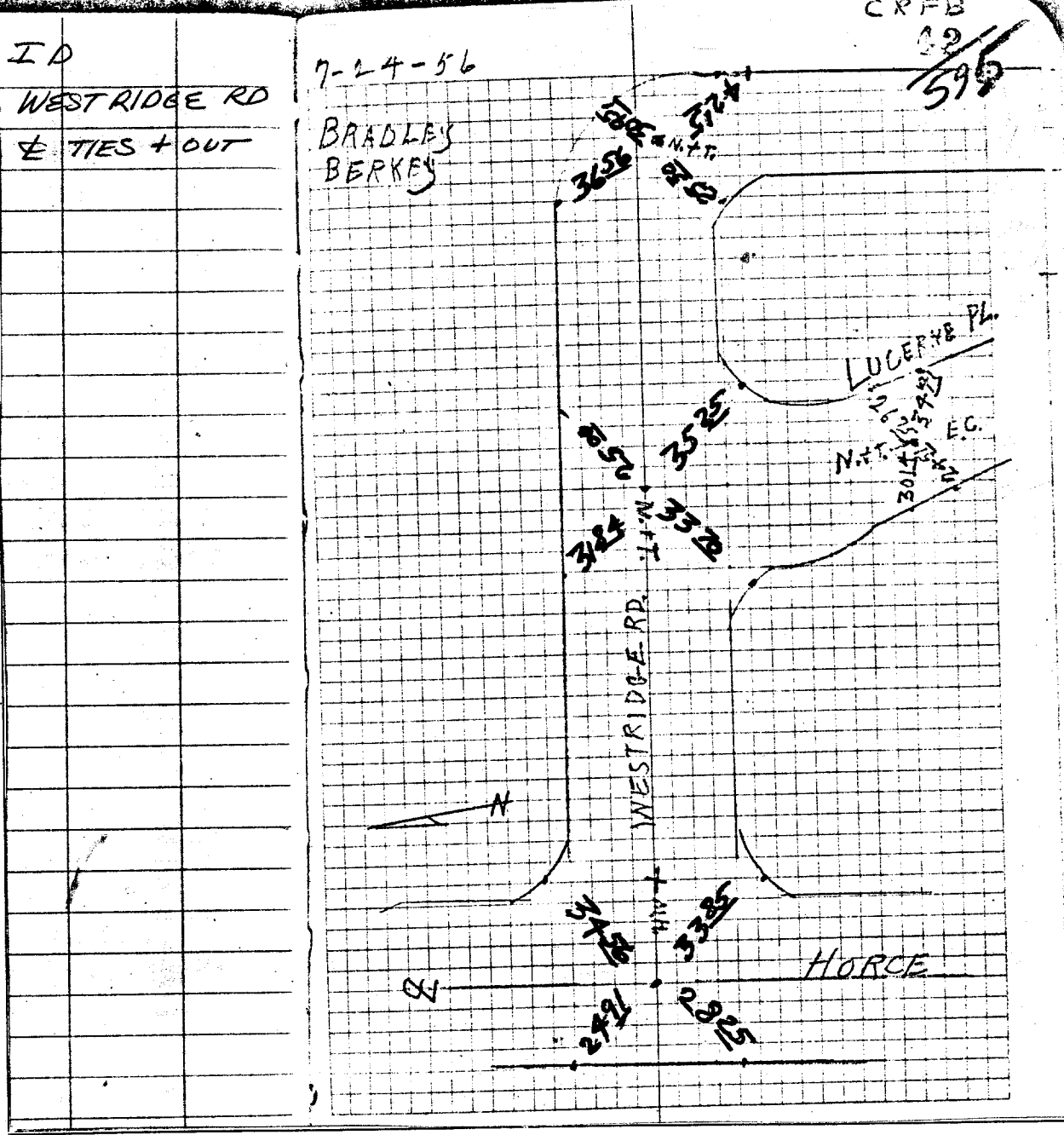
CRFB

ID  
 WEST RIDGE RD  
 E TIES + OUT

7-24-56

12  
 596

BRADLEY  
 BERKEY



- ✕ FD. Ramset Nail on T/C
- FD. LD. & TK. on T/C
- FD. "C" Nail on T/C
- Set LD. & TK. on T/C

Scale:  
 Date:  
 Drawn by:  
 W.O.:  
 F.B.:

**OFFICIAL TIE PLAT**  
**CITY OF RIVERSIDE**

These ties are for the purpose of perpetuating the found monumentation. No claim is made as to the relationship of the points or lines shown hereon to true boundary locations.

Sheet 1 of 1  
 File No.: