

Street: WEST VIEW DR.

9216 718

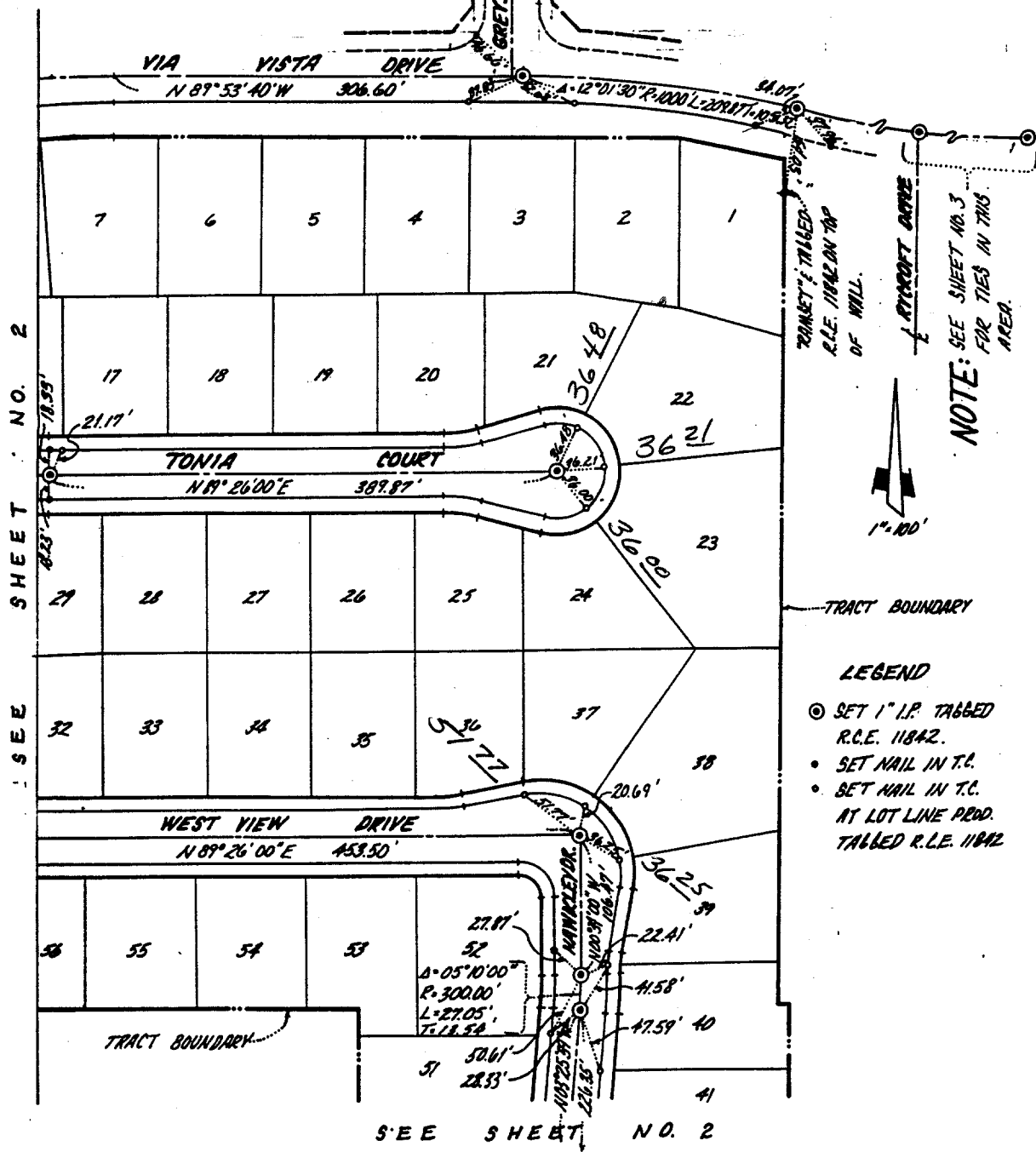
OFFICIAL USE ONLY

X-Street: HAWKLEY DR.

TONIA CT.

TRACT NO. 21679-1

TRACT NO. 169/12-15
NO. 8146



SEE SHEET NO. 2

SEE SHEET NO. 2

ALBERT A. WEBB ASSOCIATES INC

- ✕ FD. Ramset Nail on T/C
- FD. LD. & TK. on T/C
- FD. "C" Nail on T/C
- Set LD. & TK. on T/C

Scale:
 Date: 6/8/88
 Drawn by: T.L.
 W.O.: 86-90
 F.B.:

OFFICIAL TIE PLAT

CITY OF RIVERSIDE

These ties are for the purpose of perpetuating the found monumentation. No claim is made as to the relationship of the points or lines shown hereon to true boundary locations.

TRACT 21679-1

Sheet 2 of 3

File No.: