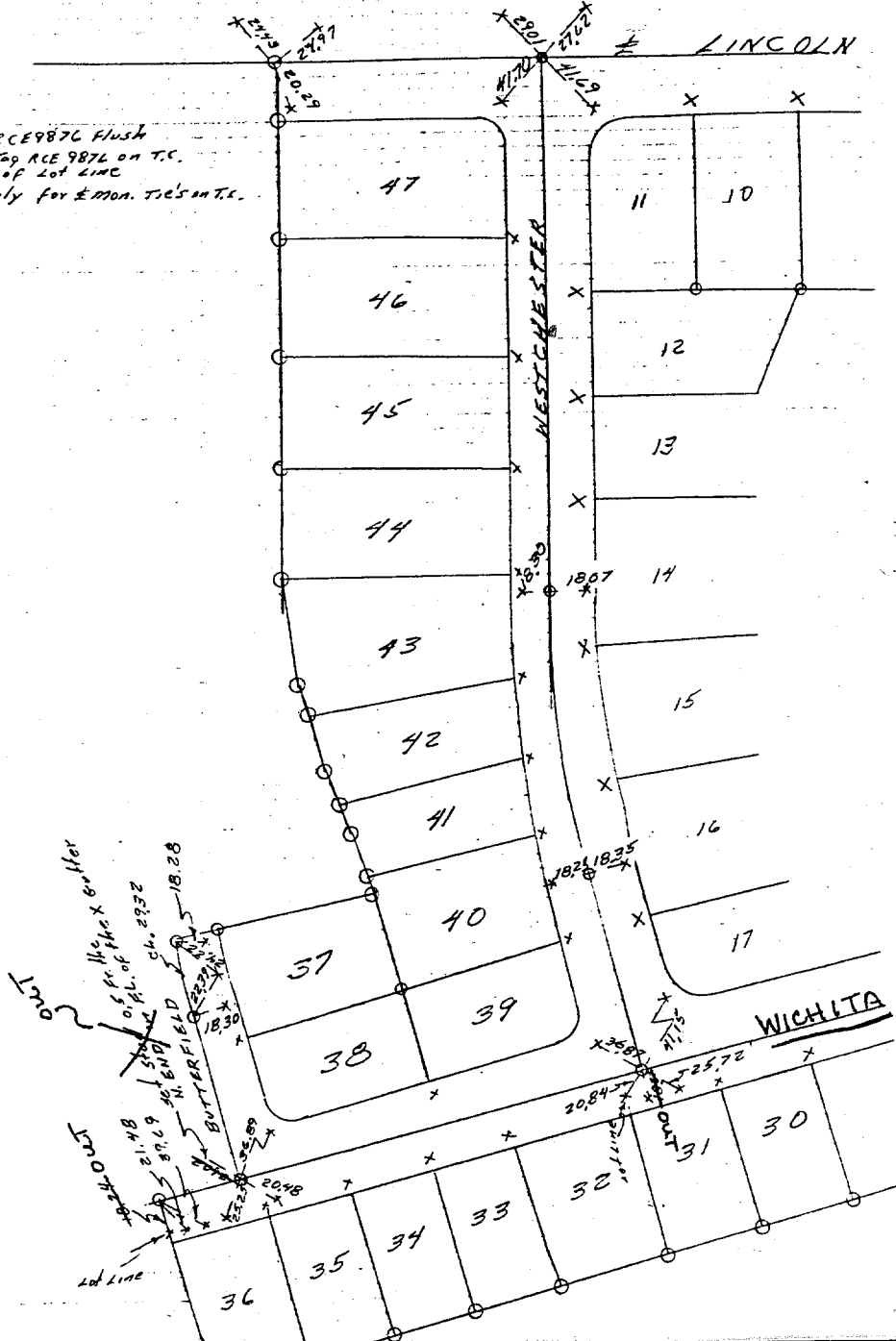


73-185  
1032 16A

TRACT # 5441 Final map 5-28-75  
Joe Aguilera J. Perez H. Evans  
FINISH 8-14-75

WICHITA

○ = set T.I.P. RCE 9876 flush  
x = set stud & TAD RCE 9876 on T.C.  
@ Prod. of 2nd zinc  
x = set stud only for E.MON. TIES on T.C.



Street: WESTCHESTER DR. X-Street: LINCOLN ST.  
8788 T.I.P. OFFICIAL USE ONLY

- ✕ FD. Ramset Nail on T/C
- FD. LD. & TK. on T/C
- FD. "C" Nail on T/C
- Set LD. & TK. on T/C

# OFFICIAL TIE PLAT

## CITY OF RIVERSIDE

These ties are for the purpose of perpetuating the found monumentation. No claim is made as to the relationship of the points or lines shown hereon to true boundary locations.

Scale:  
Date:  
Drawn by:  
W.O.:  
F.B.:

Sheet 1 of 1  
File No.: