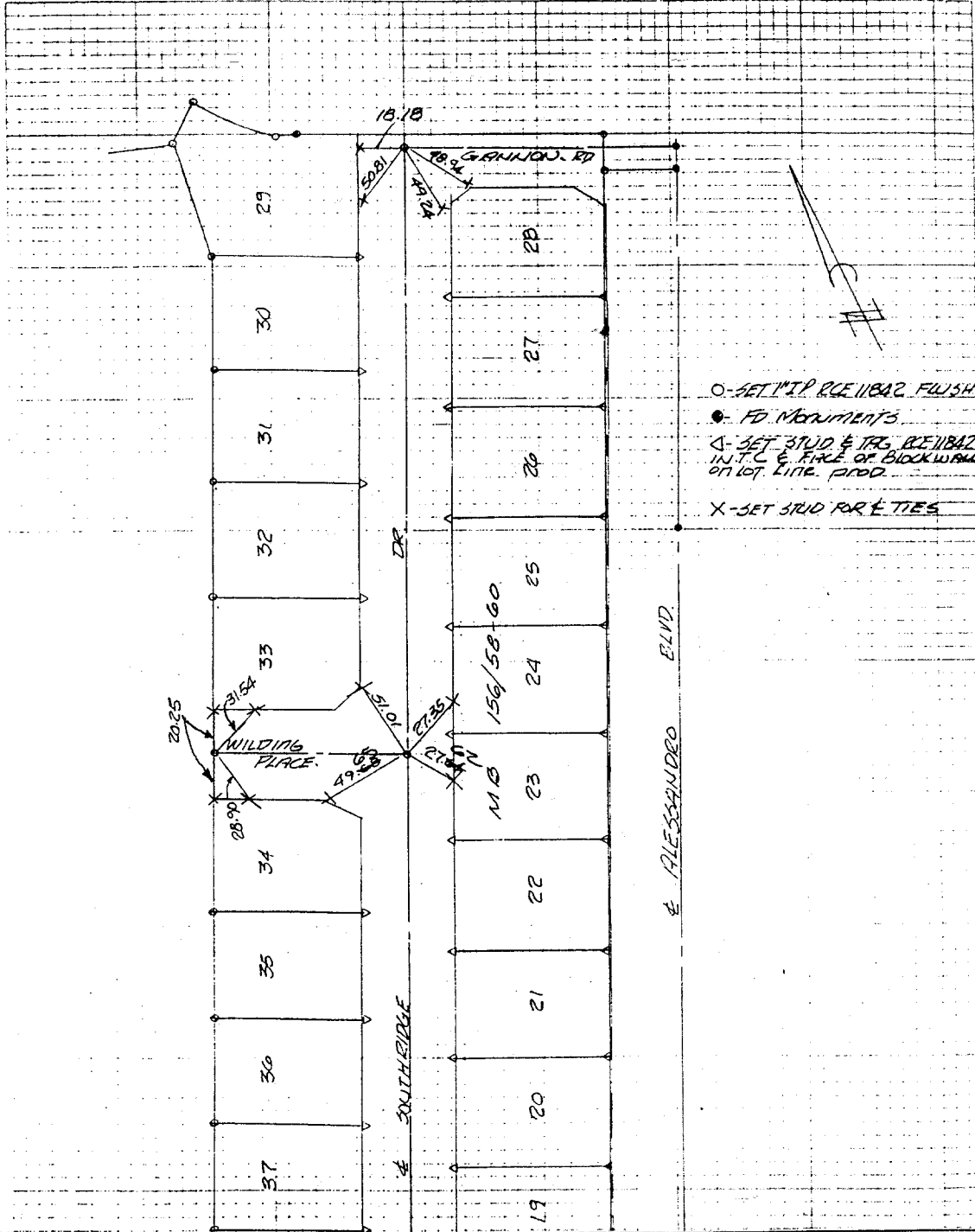


J.O. 84-177 SURVEY OF TRACT N° 9078-6 FINAL MONUMENTS DATE 12-5-86

F.B. 1041 PAGE 251 PARTY NO AND MEMBERS JARDINE, DIAZ SR. HARLAN

M.S. NOTES CALC'D BY CALC'S CHECKED BY MAP NO. WEATHER



○ - SET 1" IP REINBAR FLUSH
 ● - FD. MONUMENTS
 △ - SET 3/4" & 1/4" REINBAR IN T.C. & FACE OF BLOCK WALL ON LOT LINE. PROD.
 X - SET 3/4" FOR TIES

X FD. Ramset Nail on T/C ● FD. LD. & TK. on T/C
 ■ FD. "C" Nail on T/C ○ Set LD. & TK. on T/C

Street: **SOUTHBRIDGE DR.** X-Street: **GANNON RD.**
8817 TIE OFFICIAL USE ONLY

Scale:
 Date:
 Drawn by:
 W.O.:
 F.B.:

OFFICIAL TIE PLAT

CITY OF RIVERSIDE

These ties are for the purpose of perpetuating the found monumentation. No claim is made as to the relationship of the points or lines shown hereon to true boundary locations.

Sheet 1 of 1
 File No.: