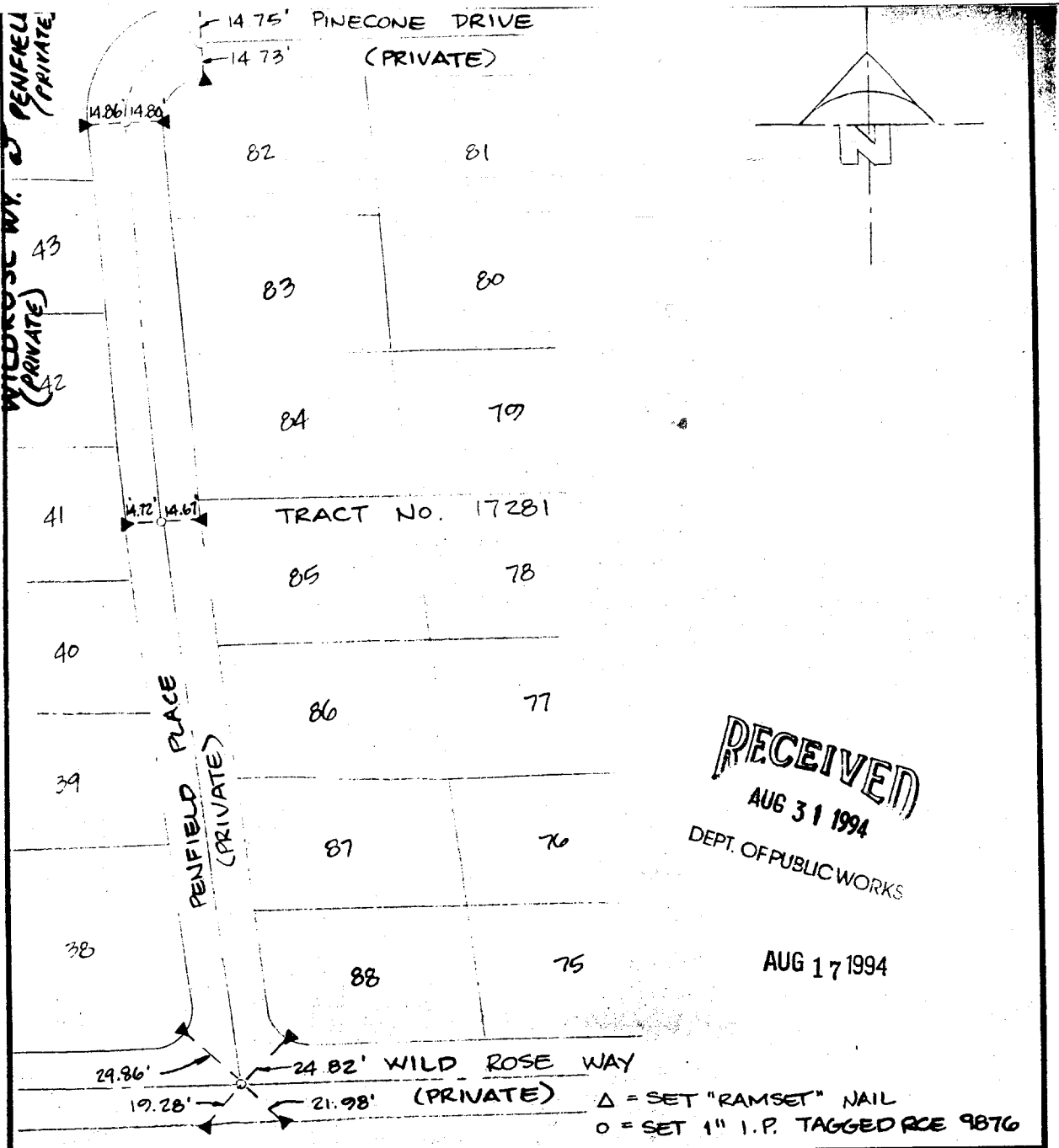


Street: **WILDROSE WAY**
8823 TIE
 X-Street: **PENFIELD PL.**
 OFFICIAL USE ONLY



RECEIVED
 AUG 31 1994
 DEPT. OF PUBLIC WORKS

AUG 17 1994

Δ = SET "RAMSET" NAIL
 ○ = SET 1" I.P. TAGGED RCE 9876

SCALE: 1" = 50'
 DATE: Aug. 1994
 DR. BY: ORZ
 W.O.: 92-38
 F.B.: 1049/169-170

OFFICIAL TIE PLAT
 CITY OF RIVERSIDE
 ALBERT A. WEBB ASSOCIATES
 CIVIL ENGINEERS
 RIVERSIDE CALIFORNIA

SHEET
3
 OF 3 SHEETS
 FILE NO.: 92-38

- ✕ FD. Ramset Nail on T/C
- FD. LD. & TK. on T/C
- FD. "C" Nail on T/C
- Set LD. & TK. on T/C

Scale:
 Date:
 Drawn by:
 W.O.:
 F.B.:

OFFICIAL TIE PLAT
 CITY OF RIVERSIDE
These ties are for the purpose of perpetuating the found monumentation. No claim is made as to the relationship of the points or lines shown hereon to true boundary locations.

Sheet 1 of 1
 File No.: