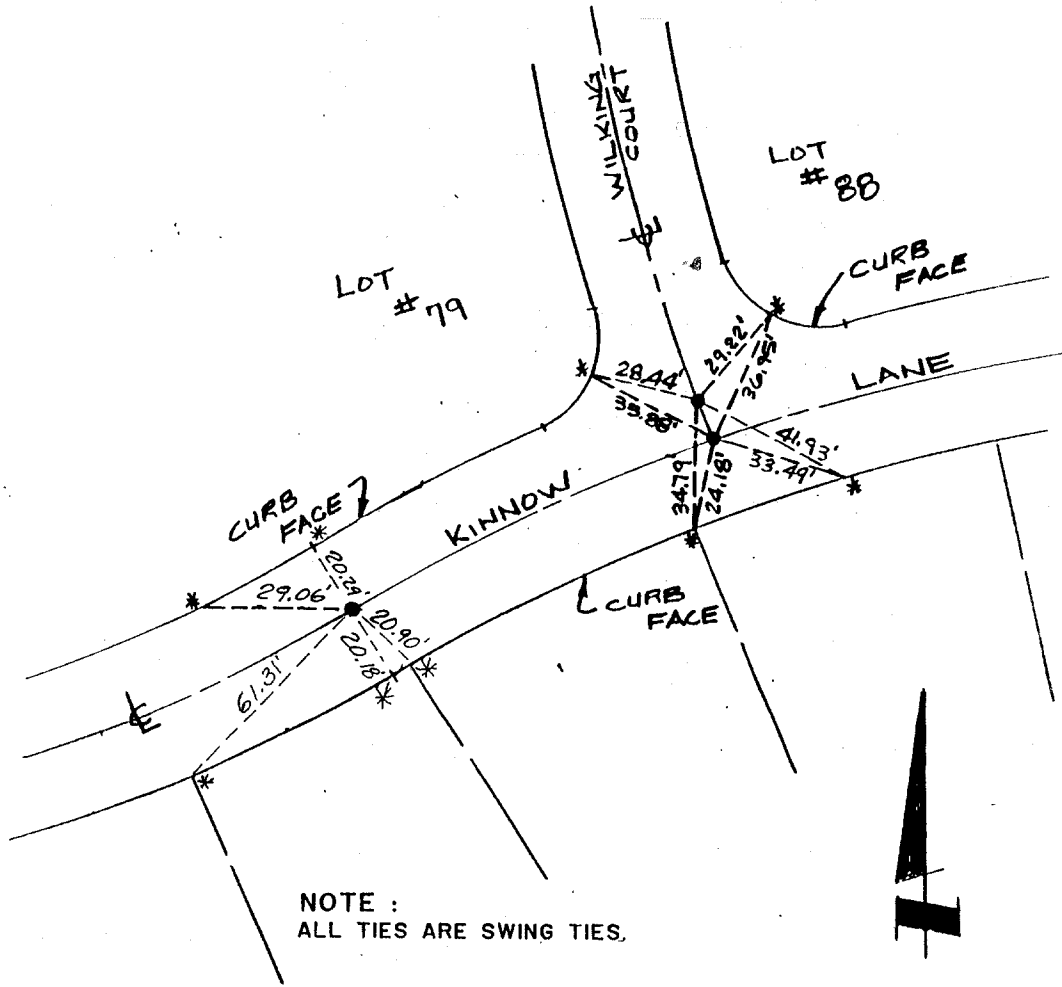


- * SET RAMSET NAIL IN CURB
- SET 1" IRON PIPE, TAGGED LS 5306



NOTE :
ALL TIES ARE SWING TIES.

Street: **WILKING CT.**
8825 TIE
OFFICIAL USE ONLY
X-Street: **KINNOW LN.**

TRACT NO. 19958 - 1
CENTERLINE TIES

SOUTHLAND ENGINEERING

2501 RUBIDOUX BLVD. SUITE B
RIVERSIDE, CALIFORNIA, 92509
PH. (714) 788-8488

Scale: N.T.S.

Date: OCT. 1988

- × FD. Ramset Nail on T/C
- FD. "C" Nail on T/C

- FD. LD. & TK. on T/C
- Set LD. & TK. on T/C

Scale:
Date:
Drawn by:
W.O.:
F.B.:

OFFICIAL TIE PLAT
CITY OF RIVERSIDE

These ties are for the purpose of perpetuating the found monumentation. No claim is made as to the relationship of the points or lines shown hereon to true boundary locations.

Sheet 1 of 1
File No.: