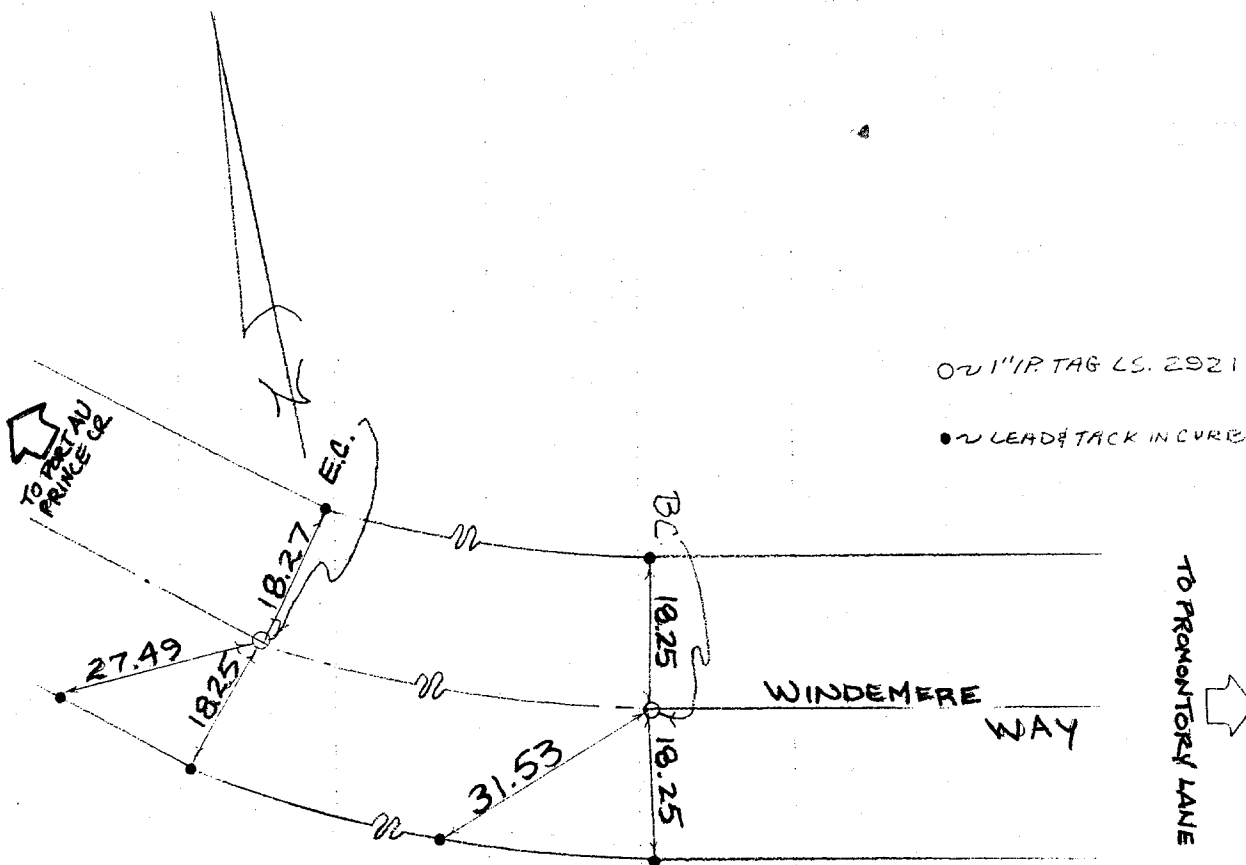


VTN CONSOLIDTD.
TR. NO. 4111

SWINGTIES

WINDEMERE WAY
@
BC & EC WLY OF
PROMONTORY LN
COPY
FIELD CKD 2/76
JHT

Street: **WINDEMERE WAY** X-Street: **BC & EC.**
8840 TIE OFFICIAL USE ONLY **WLY OF PROMONTORY LN.**



RCH. 3-76

- ✕ FD. Ramset Nail on T/C
- FD. "C" Nail on T/C

- FD. LD. & TK. on T/C
- Set LD. & TK. on T/C

Scale:
Date:
Drawn by:
W.O.:
F.B.:

OFFICIAL TIE PLAT
CITY OF RIVERSIDE

These ties are for the purpose of perpetuating the found monumentation. No claim is made as to the relationship of the points or lines shown hereon to true boundary locations.

Sheet 1 of 1
File No.: