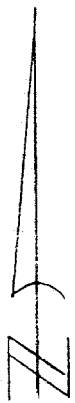


Street: WINDEMERE WAY
8892 TIE
 X-Street: TRACT BDDY.
 OFFICIAL USE ONLY N'LY OF PROMONTORY LN

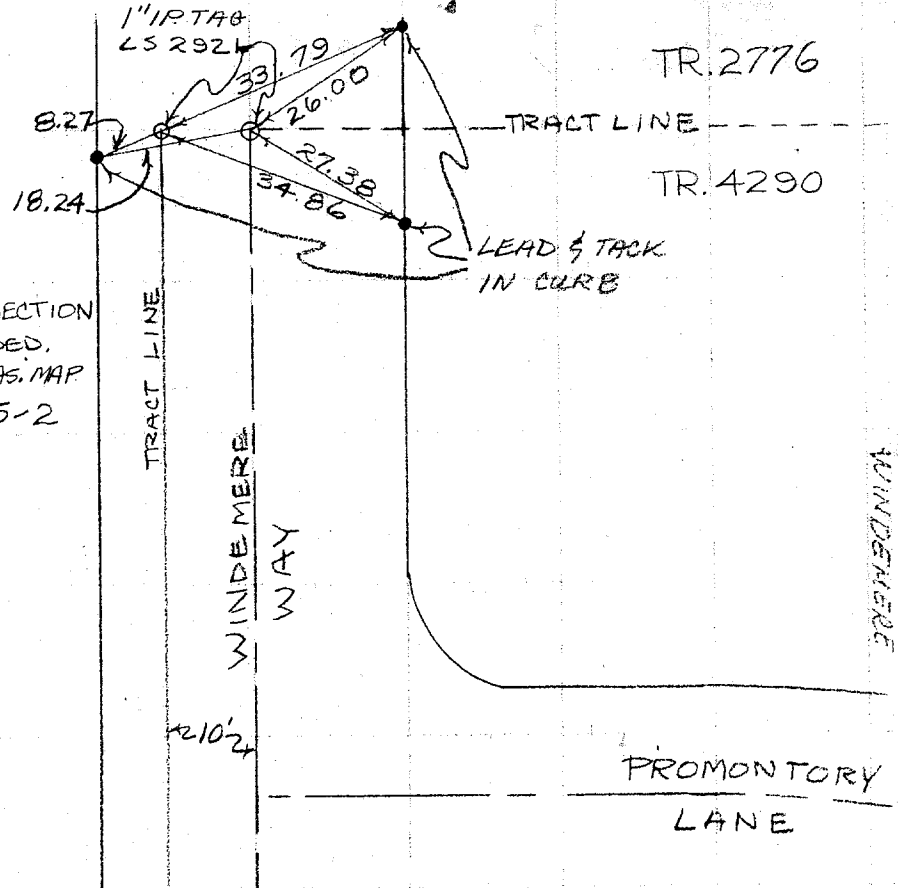
VTN CONSOLIDTD
 TRACT No. 4290

SWING TIES

WINDEMERE WAY
 N'LY OF
 PROMONTORY LN
 COPY
 FIELD CHECKED
 2/76 JHT



POR. SECTION
 UNDIVIDED,
 SEE AS. MAP
 5-75-2



RCH 3-76

- ✕ FD. Ramset Nail on T/C
- FD. LD. & TK. on T/C
- FD. "C" Nail on T/C
- Set LD. & TK. on T/C

Scale:
 Date:
 Drawn by:
 W.O.:
 F.B.:

OFFICIAL TIE PLAT
CITY OF RIVERSIDE

These ties are for the purpose of perpetuating the found monumentation. No claim is made as to the relationship of the points or lines shown hereon to true boundary locations.

Sheet 1 of 1
 File No.: