

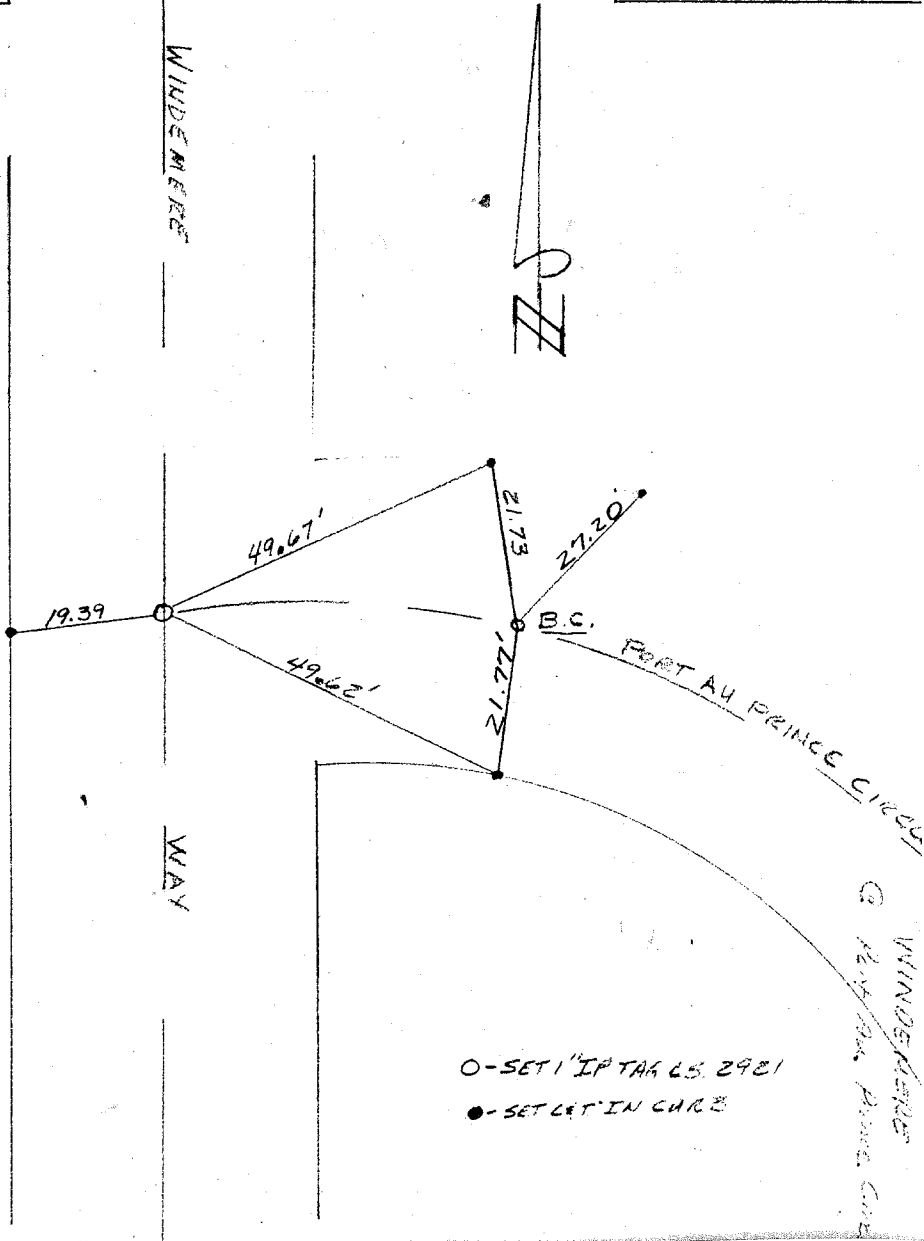
VTN CONSOLIDATED
TR. # 4111

WINDEMERE WAY
PORT AU PRINCE CIRCLE
AND
1ST B.C. E'LY
COPY
FIELD CRD. BY J. H. T.
2/76

SWING TIES

WINDEMERE

WAY



O - SET 1" IP TAG LS 2921
● - SET 4" IN CURVE

× FD. Ramset Nail on T/C
■ FD. "C" Nail on T/C

● FD. LD. & TK. on T/C
○ Set LD. & TK. on T/C

Street: WINDEMERE WAY 8844 71E X-Street: PORT AU PRINCE CIR.
OFFICIAL USE ONLY

Scale:
Date:
Drawn by:
W.O.:
F.B.:

OFFICIAL TIE PLAT

CITY OF RIVERSIDE

These ties are for the purpose of perpetuating the found monumentation. No claim is made as to the relationship of the points or lines shown hereon to true boundary locations.

Sheet 1 of 1
File No.: