

Ties, Winslow Ct. & Greenwich Dr.

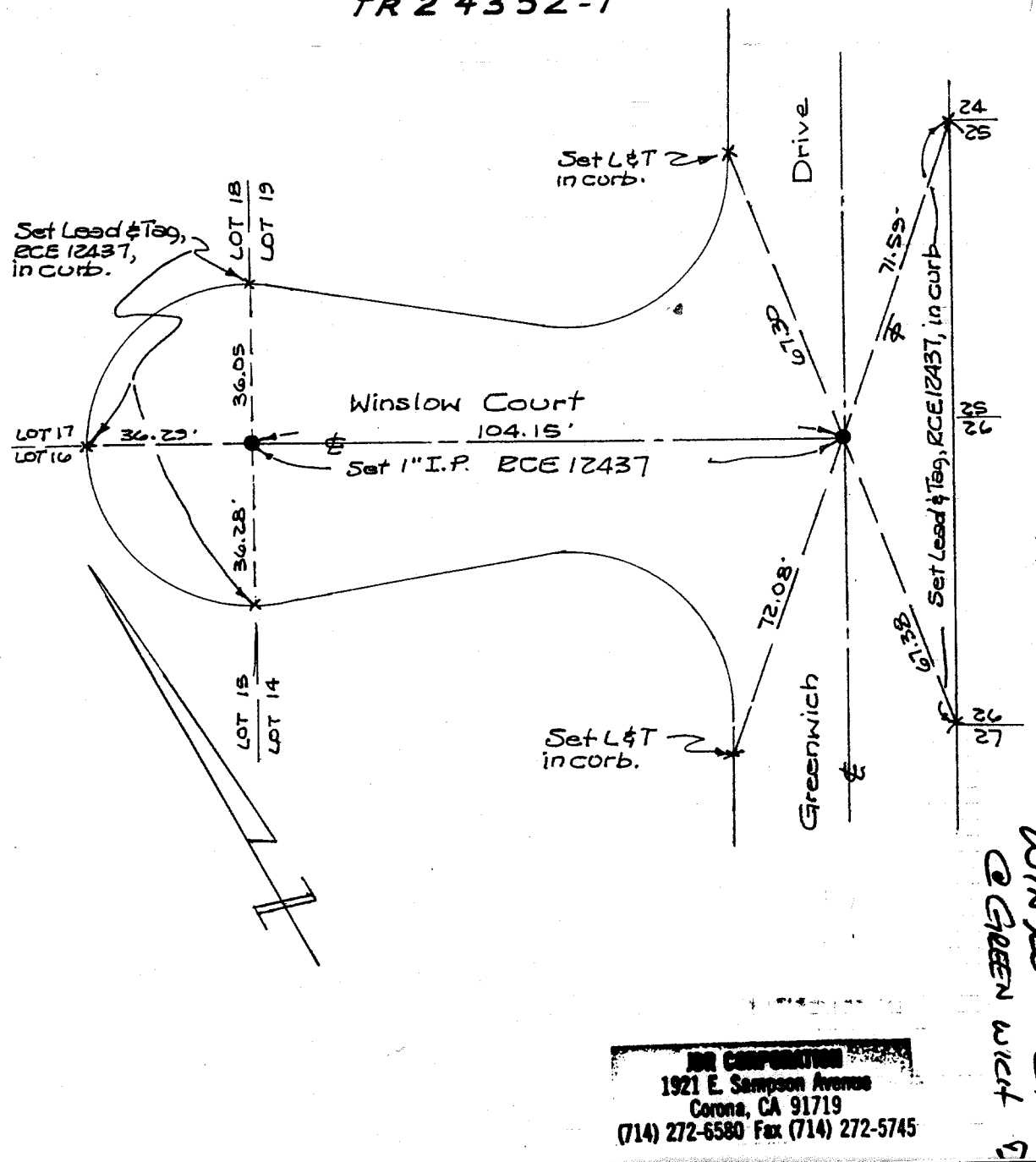
Lp

JDR Corporation (JB-JE)

12-13-00

ORANGE COUNTY SURVEYOR

TR 24352-1



JDR CORPORATION
 1921 E. Sampson Avenue
 Corona, CA 91719
 (714) 272-6580 Fax (714) 272-5745

Winslow Ct.
 @ Greenwich Dr.

- ✕ FD. Ramset Nail on T/C
- FD. "C" Nail on T/C

- FD. LD. & TK. on T/C
- Set LD. & TK. on T/C

Scale:
 Date:
 Drawn by:
 W.O.:
 F.B.:

OFFICIAL TIE PLAT
CITY OF RIVERSIDE

These ties are for the purpose of perpetuating the found monumentation. No claim is made as to the relationship of the points or lines shown hereon to true boundary locations.

Sheet 1 of 1
 File No.:

Street: **WINSLOW CT.**
8865 TIE
 X-Street: **CAL-DE-SAC**
 OFFICIAL USE ONLY