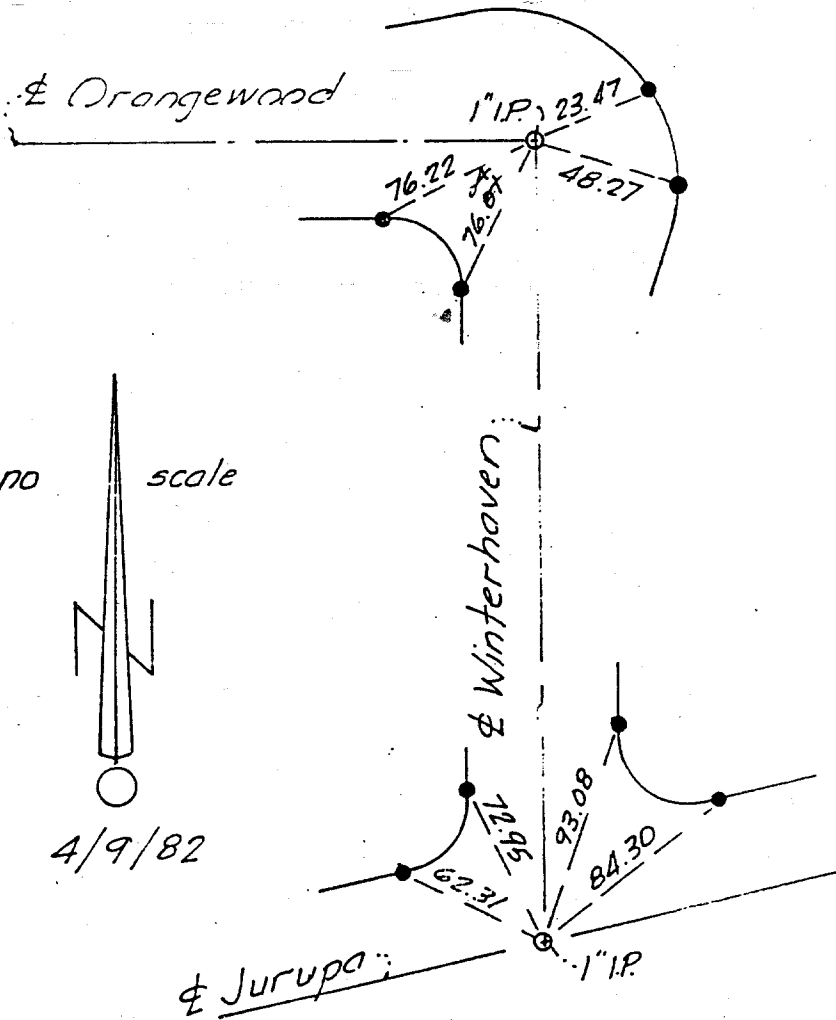


ROBERT L. TAYLOR  
RCE 10470

WINTERHAVEN @ ORANGWOOD / JURUPA



○ ~ 1" I.P., flush, RCE 10470

● ~ nail & tag RCE 10470 in conc. curb.

⊕ Ties

- ✕ FD. Ramset Nail on T/C
- FD. "C" Nail on T/C

- FD. LD. & TK. on T/C
- Set LD. & TK. on T/C

Street: WINTERHAVEN AVE. 8876 T/C OFFICIAL USE ONLY X-Street: ORANGWOOD DR.

Scale:

Date:

Drawn by:

W.O.:

F.B.:

## OFFICIAL TIE PLAT

### CITY OF RIVERSIDE

*These ties are for the purpose of perpetuating the found monumentation. No claim is made as to the relationship of the points or lines shown hereon to true boundary locations.*

Sheet 1 of 1

File No.: