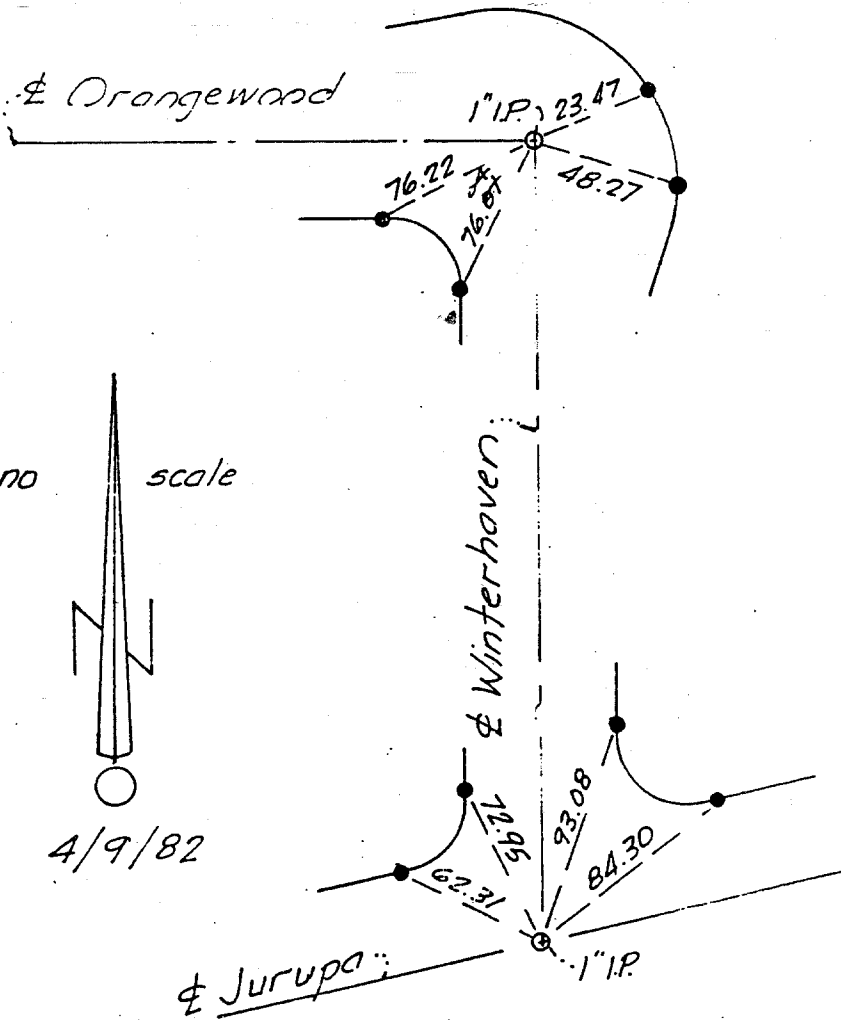


ROBERT L. TAYLOR  
RCE 10470

WINTERHAVEN @ ORANGWOOD / JURUPA



- ~ 1" I.P. flush, RCE 10470
- ~ nail & tag RCE 10470 in conc. curb.

⊕ Ties

- ✕ FD. Ramset Nail on T/C
- FD. LD. & TK. on T/C
- FD. "C" Nail on T/C
- Set LD. & TK. on T/C

Street: WINTERHAVEN AVE. X-Street: JURUPA AVE.  
8971 TIE OFFICIAL USE ONLY

Scale:  
Date:  
Drawn by:  
W.O.:  
F.B.:

## OFFICIAL TIE PLAT

### CITY OF RIVERSIDE

*These ties are for the purpose of perpetuating the found monumentation. No claim is made as to the relationship of the points or lines shown hereon to true boundary locations.*

Sheet 1 of 1  
File No.: