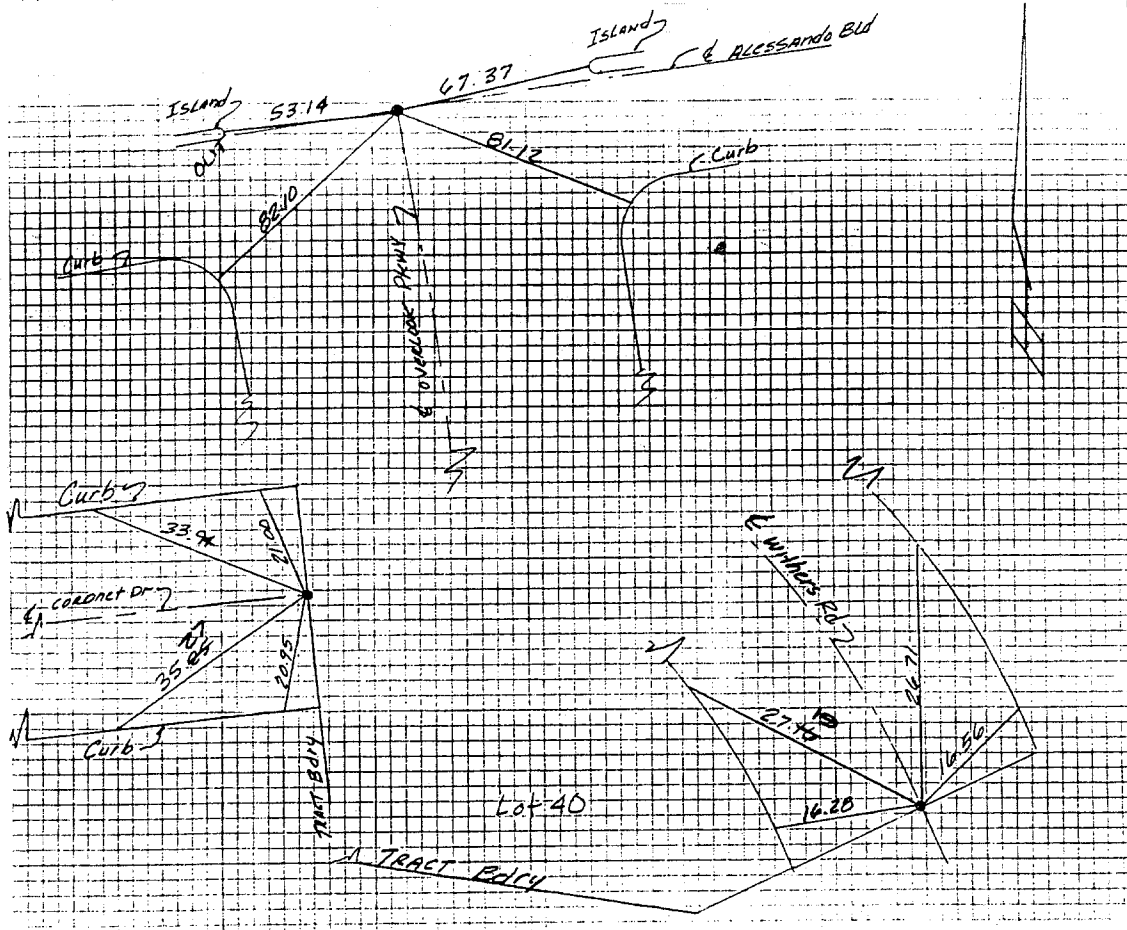


SURVEY OF TRACT 18376-1  
 FOR Presley & Ties W.O.No. 7685 DATE 2-14-85  
 SURVEY PARTY R Sepulveda B Andrews REF. \_\_\_\_\_ A.M. \_\_\_\_\_

SURVEY NOTES



Set Ramset Nails on exist.  
 curb for ties  
 TIES ARE TO 1" I.P.'S  
 WITH PLASTIC PLUGS.  
 STAMPED LS 3018

FIELD CRD 12-87 EG

TIE SHEETS  
 TR 18376-1  
 Sheet 5 of 5 Sheets

- FD. Ramset Nail on T/C
- FD. LD. & TK. on T/C
- FD. "C" Nail on T/C
- Set LD. & TK. on T/C

## OFFICIAL TIE PLAT

### CITY OF RIVERSIDE

These ties are for the purpose of perpetuating the found  
 monumentation. No claim is made as to the relationship of  
 the points or lines shown hereon to true boundary locations.

Scale: \_\_\_\_\_  
 Date: \_\_\_\_\_  
 Drawn by: \_\_\_\_\_  
 W.O.: \_\_\_\_\_  
 F.B.: \_\_\_\_\_

Sheet 1 of 1  
 File No.: \_\_\_\_\_

Street: WITHERS RD.  
8875 TIC  
 X-Street: TRACT BNDY.  
 OFFICIAL USE ONLY