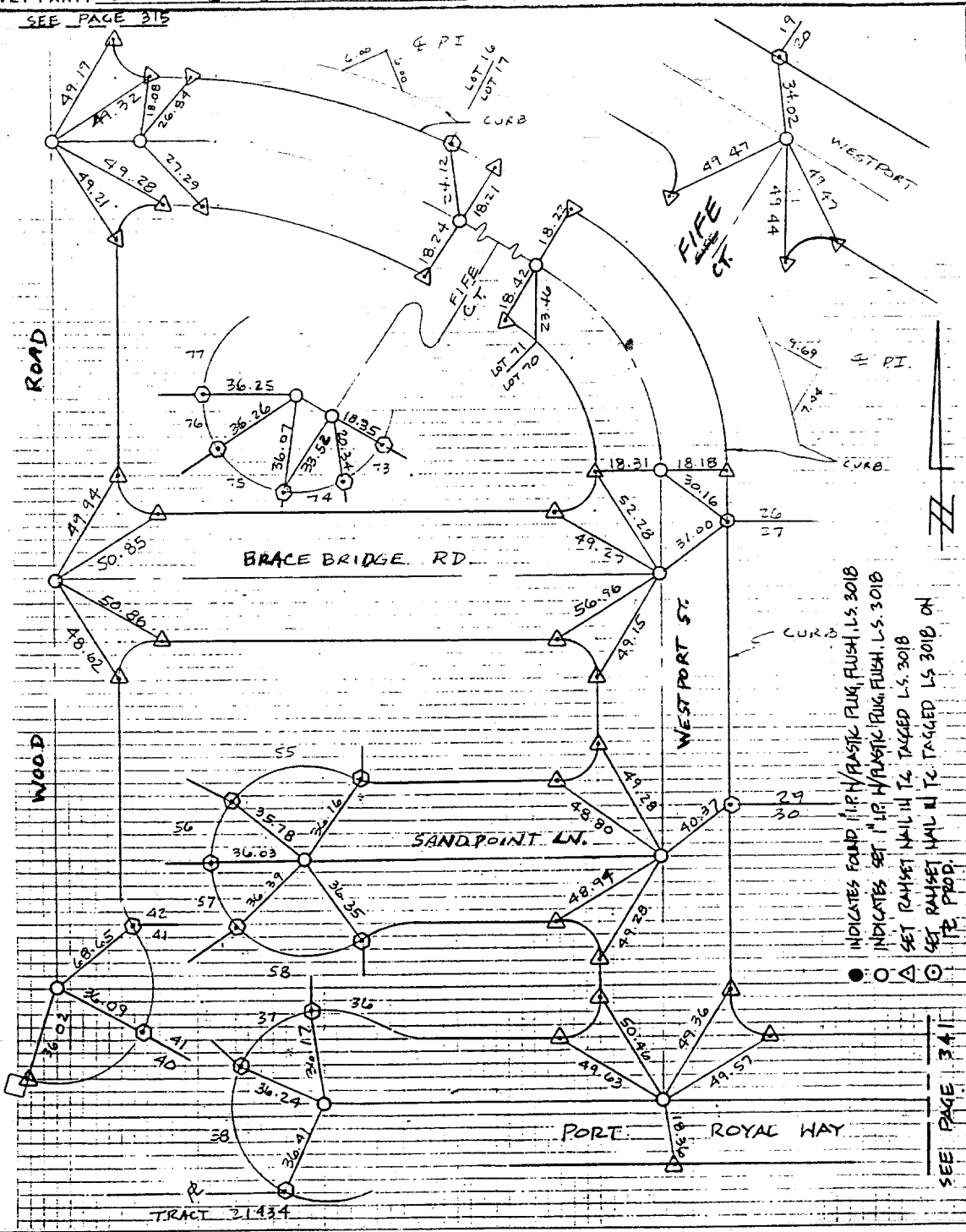


SURVEY OF TRACT 21403-3 & TIES
 FOR AHMAD:SON W.O.No. 2254 DATE 12-1-87
 SURVEY PARTY S MCKEE REF. 401215 A.M.
 SEE PAGE 315

SURVEY NOTES



INDICATES FOUND HIGH/PLASTIC PLUG, FLUSH L.S. 3018
 INDICATES SET "IP" W/PLASTIC PLUG, FLUSH L.S. 3018
 SET RAMSET NAIL IN TC TAGGED L.S. 3018
 SET RAMSET NAIL IN TC TAGGED L.S. 3018 ON
 TP. PROP.

- FD. Ramset Nail on T/C
- FD. "C" Nail on T/C
- FD. LD. & TK. on T/C
- Set LD. & TK. on T/C

Scale:
 Date:
 Drawn by:
 W.O.:
 F.B.:

OFFICIAL TIE PLAT

CITY OF RIVERSIDE

These ties are for the purpose of perpetuating the found monumentation. No claim is made as to the relationship of the points or lines shown hereon to true boundary locations.

Sheet 1 of 1
 File No.:

Street: **WOOD RD.**
8886 TIE
 X-Street: **CUL-DE-SAC**
 OFFICIAL USE ONLY