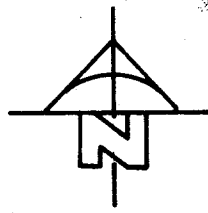
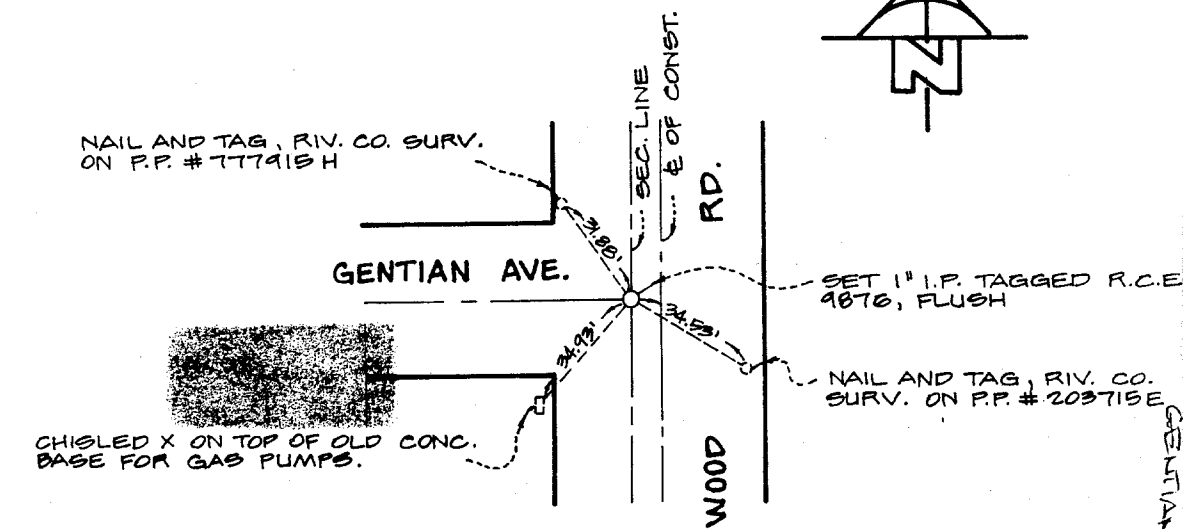
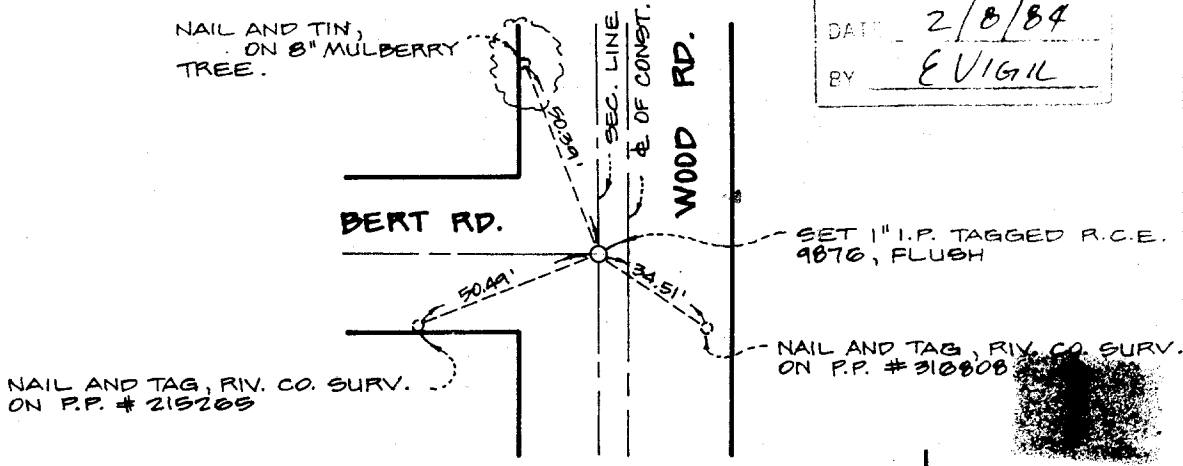


WOOD ROAD

TB 72/54

SECTIONS 19 & 20
T.35., R.4 W.

THIS TIE PLAT IS VALID FOR
 DATE: 2/8/84
 BY: E VIGIL



ALBERT A. WEBB ASSOCIATES-CIVIL ENGINEERS

- ✕ FD. Ramset Nail on T/C
- FD. LD. & TK. on T/C
- FD. "C" Nail on T/C
- Set LD. & TK. on T/C

Street: **WOOD RD.**
8896 TIE
 X-Street: **GENTIAN AVE.**
 OFFICIAL USE ONLY

Scale:
 Date:
 Drawn by:
 W.O.:
 F.B.:

OFFICIAL TIE PLAT CITY OF RIVERSIDE

These ties are for the purpose of perpetuating the found monumentation. No claim is made as to the relationship of the points or lines shown hereon to true boundary locations.

Sheet 1 of 1
 File No.: