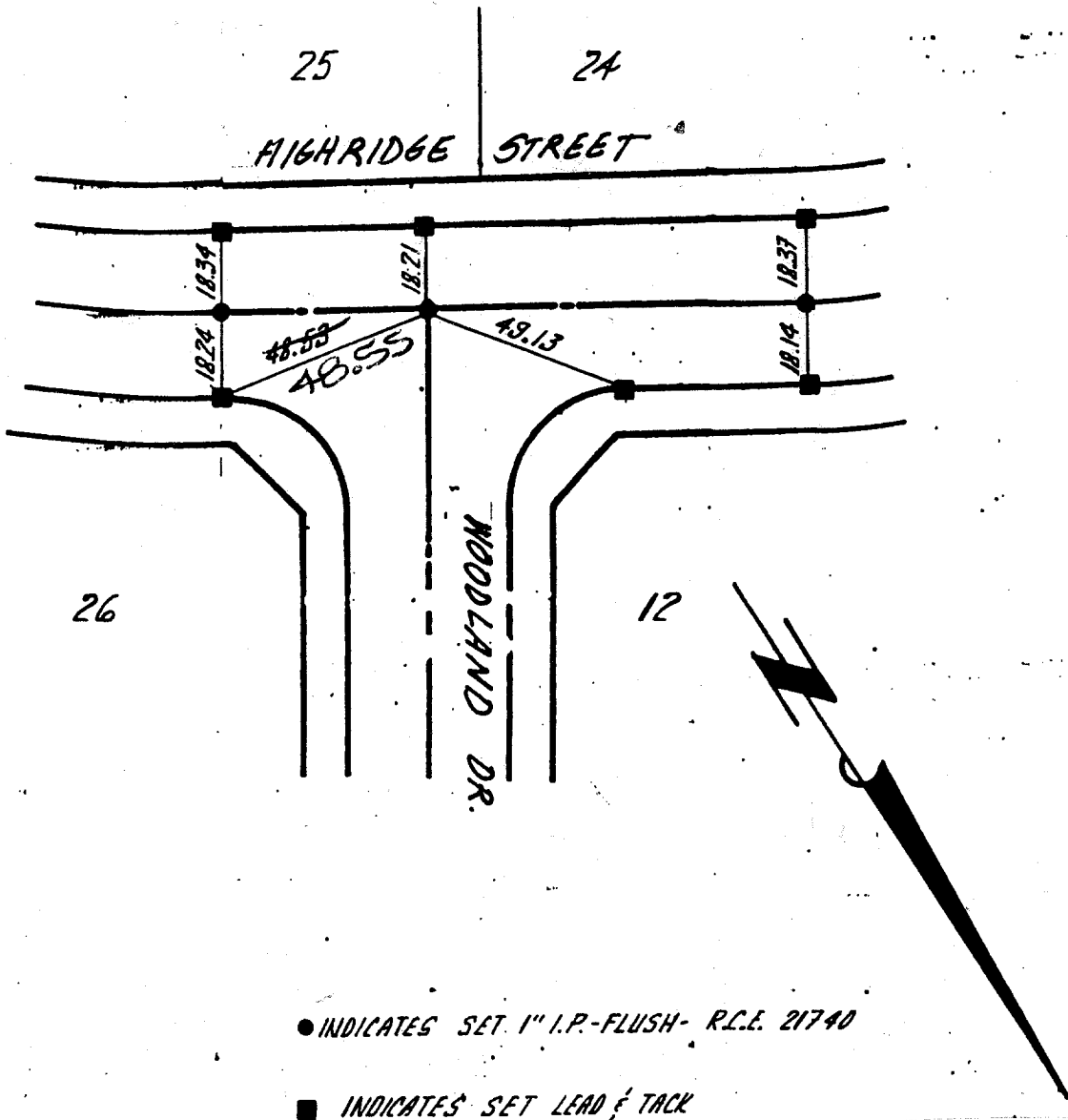




GABEL, COOK & DELEON
 Environmental • Hydrology • Planning
 Civil Engineering • Surveying • Structures
 647 North Main Street, Suite 1-B, Riverside, Calif. 92501
 Telephone 714 788-8092

SHT 4 OF 6

TIES TR. 21198-1



● INDICATES SET 1" I.P.-FLUSH- R.C.E. 21740

■ INDICATES SET LEAD & TACK

× FD. Ramset Nail on T/C
 ■ FD. "C" Nail on T/C

● FD. LD. & TK. on T/C
 ○ Set LD. & TK. on T/C

Street: WOODLAND DR.
8907 TIE
 X-Street: HIGHRIDGE ST.
 OFFICIAL USE ONLY

OFFICIAL TIE PLAT
CITY OF RIVERSIDE

These ties are for the purpose of perpetuating the found monumentation. No claim is made as to the relationship of the points or lines shown hereon to true boundary locations.

Scale:

Date:

Drawn by:

W.O.:

F.B.:

Sheet 1 of 1

File No.: