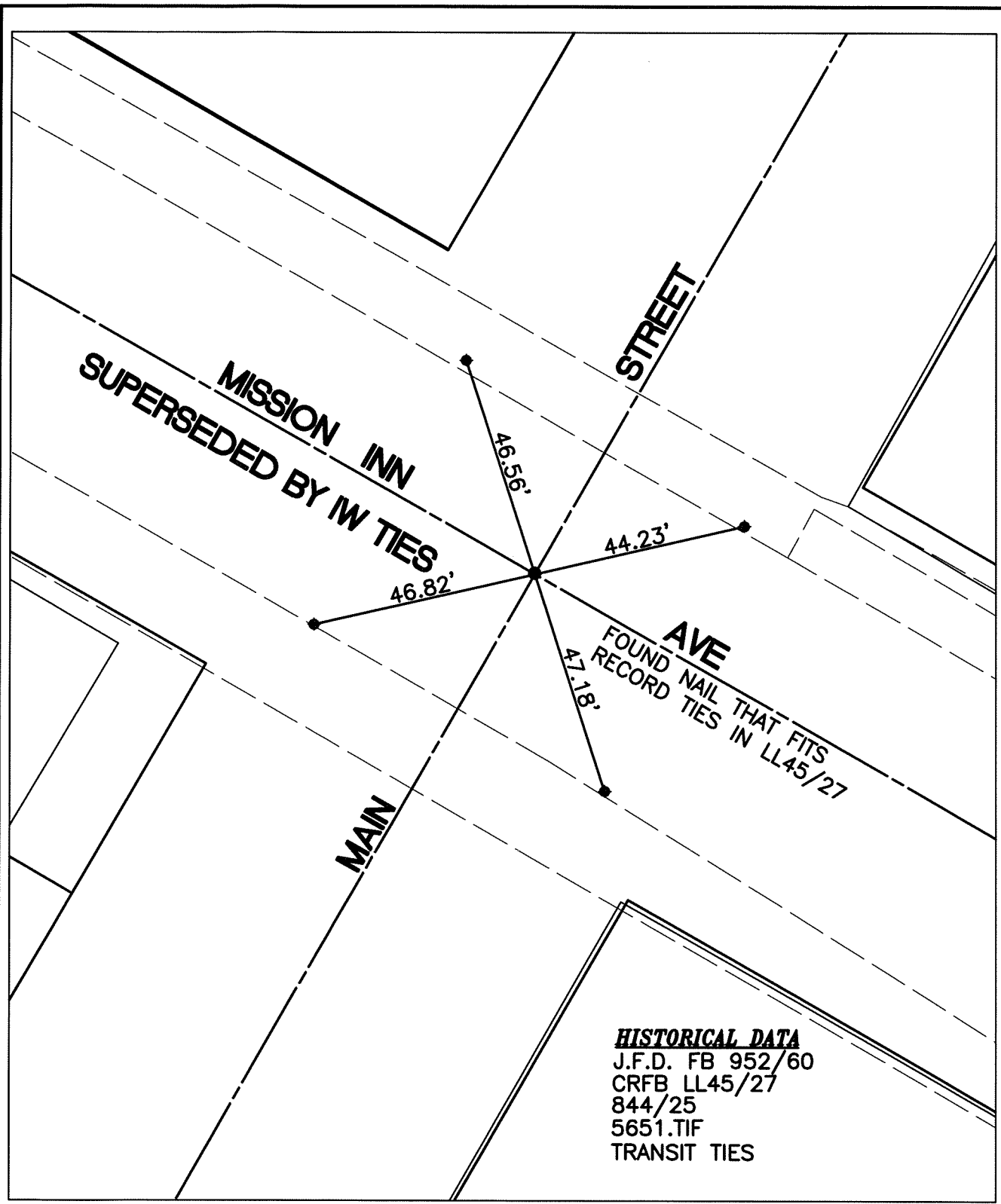


8917.TIF

STREET: MISSION INN AVE

OFFICIAL USE ONLY

X-STREET: MAIN STREET

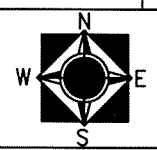


HISTORICAL DATA
 J.F.D. FB 952/60
 CRFB LL45/27
 844/25
 5651.TIF
 TRANSIT TIES

SCALE: 1"=30'
 DATE: 09.16.2010
 DRAWN BY: B DURENTE
 F.B.:SEE HISTORICAL DATA
 SEC:23 T.2 S.,R.5 W

OFFICIAL TIE PLAT
 CITY OF RIVERSIDE

THESE TIES ARE FOR THE PURPOSE OF PERPETUATING THE FOUND MONUMENTATION. NO CLAIM IS MADE AS THE RELATIONSHIP OF THE POINTS OR LINES SHOWN HEREON TO TRUE BOUNDARY LOCATIONS



SHEET 1 OF 1