

SWING TIES

892. TIF

HISTORICAL DATA

-MB 43/87-88

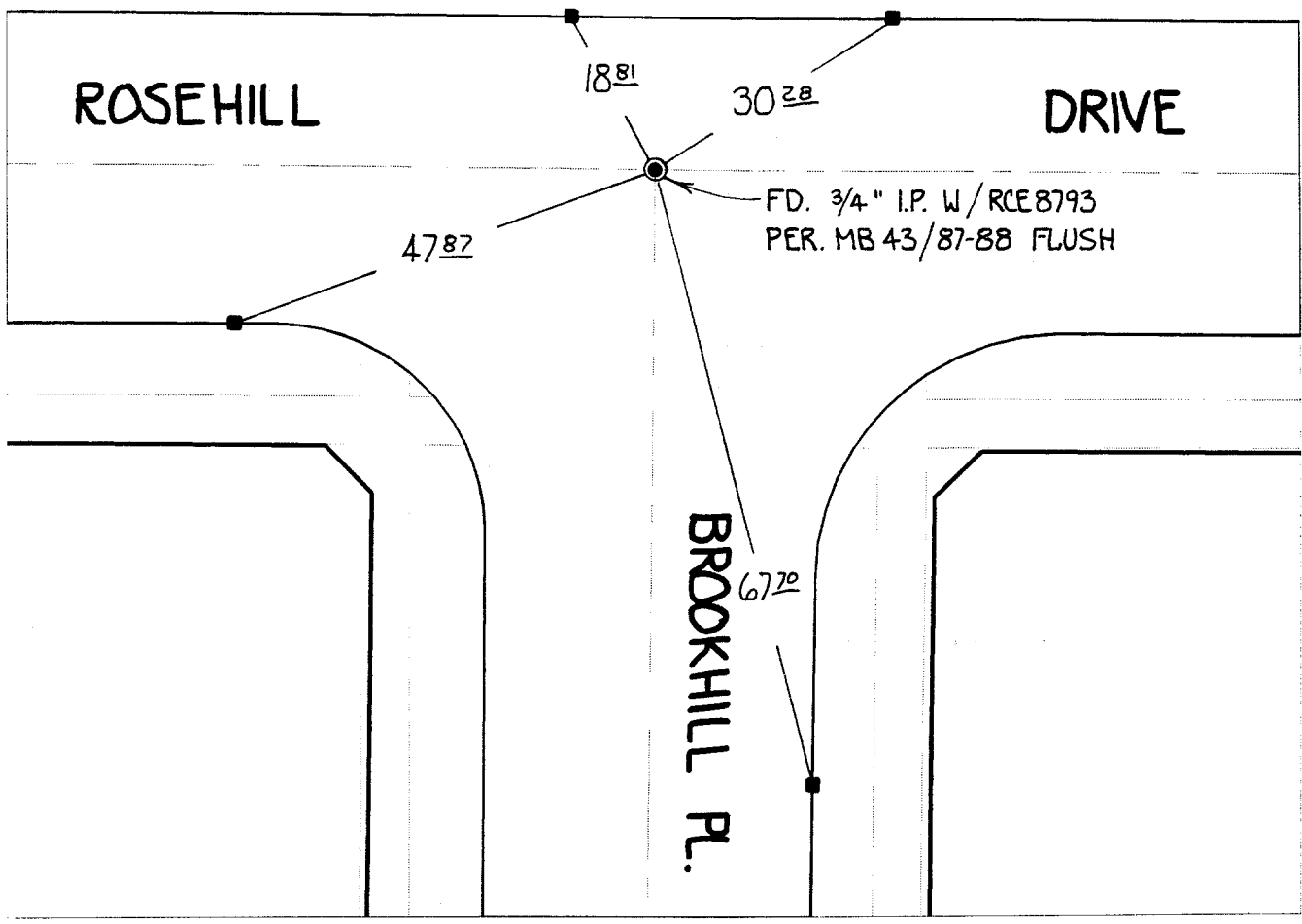
**NOTE: P.K. AND CITY ENGINEER TAG TO BE SET @ SURFACE AFTER STREET CONSTRUCTION IS COMPLETE. (IF POSSIBLE)*

Street:

ROSEHILL DRIVE

X-Street: OFFICIAL USE ONLY

BROOKHILL PLACE



- ✕ FD. Ramset Nail on T/C
- FD. LD. & TK. on T/C
- FD. "C" Nail on T/C
- Set LD. & TK. on T/C

Scale: 1" = 20'
 Date: 06/15/00
 Drawn by: SURVEY
 W.O.:
 F.B.:

OFFICIAL TIE PLAT CITY OF RIVERSIDE

These ties are for the purpose of perpetuating the found monumentation. No claim is made as to the relationship of the points or lines shown hereon to true boundary locations.



Sheet 1 of 1
 File No.: