

ETIES  
CITY OF RIVERSIDE  
TRACT N<sup>o</sup> 3783

WYBOURN

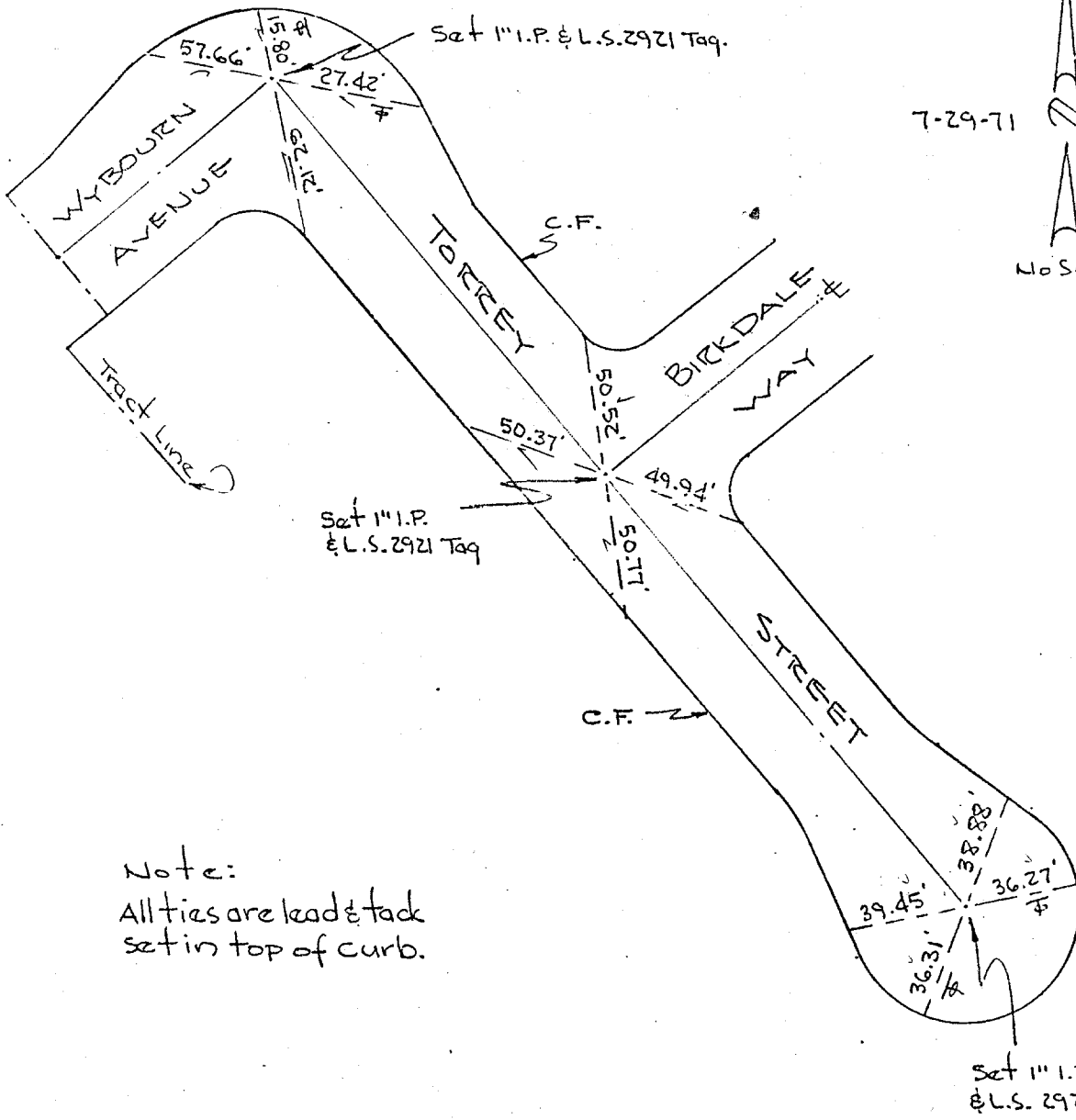
V.T.N. Inc.  
Frank W. Richardson  
L.S. 2921

WYBOURN  
© TORREY

Page  
2-3

7-29-71

No Scale



Note:  
All ties are lead & tack  
set in top of curb.

- ✕ FD. Ramset Nail on T/C
- FD. "C" Nail on T/C

- FD. LD. & TK. on T/C
- Set LD. & TK. on T/C

**OFFICIAL TIE PLAT**  
CITY OF RIVERSIDE

*These ties are for the purpose of perpetuating the found monumentation. No claim is made as to the relationship of the points or lines shown hereon to true boundary locations.*

Scale: \_\_\_\_\_  
Date: \_\_\_\_\_  
Drawn by: \_\_\_\_\_  
W.O.: \_\_\_\_\_  
F.B.: \_\_\_\_\_

Sheet 1 of 1  
File No.: \_\_\_\_\_

Street: WYBOURN AVE.  
8921 TIF  
OFFICIAL USE ONLY  
X-Street: TORREY ST.