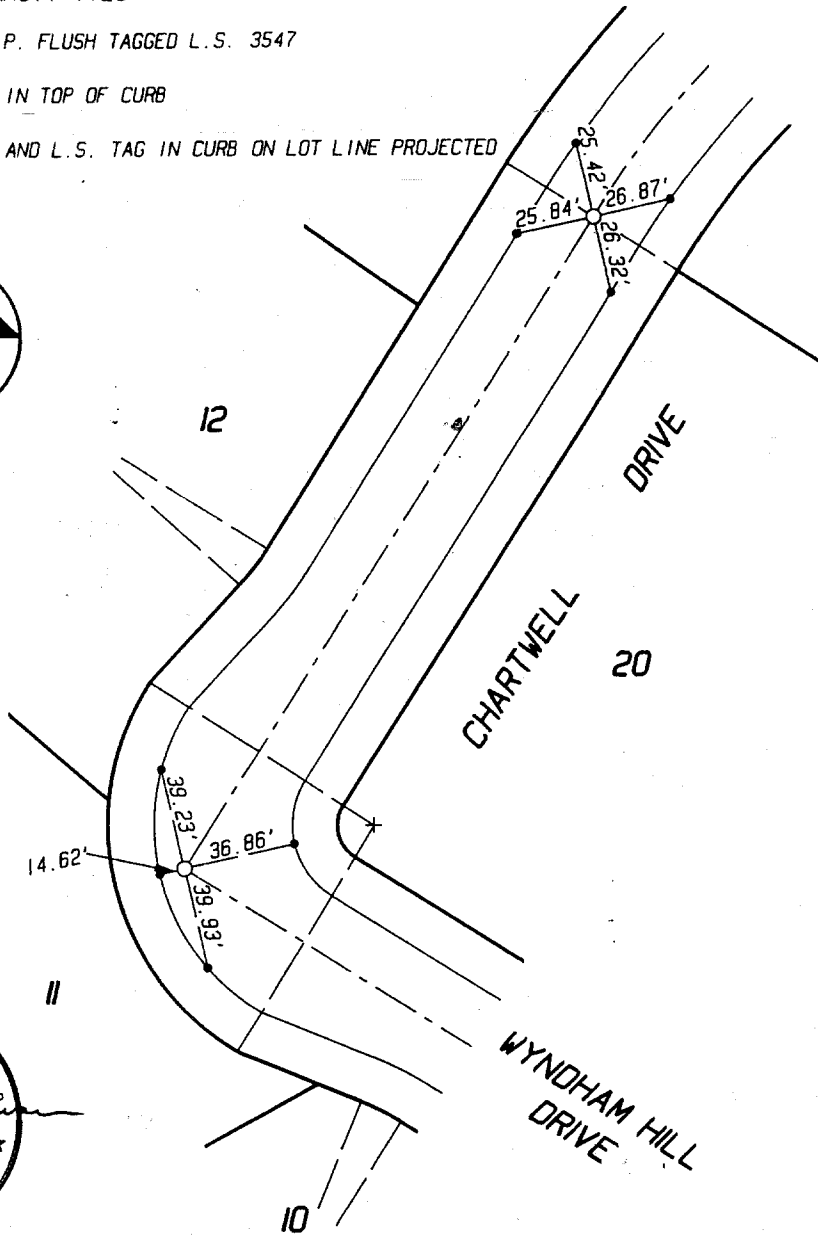


ALL TIES ARE TRANSIT TIES

- INDICATES SET 1" I.P. FLUSH TAGGED L.S. 3547
- INDICATES SET NAIL IN TOP OF CURB
- ⊙ INDICATES SET NAIL AND L.S. TAG IN CURB ON LOT LINE PROJECTED



PLAT PREPARED BY:



**INTEGRA ENGINEERING, INC.**  
 LAND SURVEYORS • CIVIL ENGINEERS  
 621 E. CARNEGIE DRIVE, #120, SAN BERNARDINO, CA. 92408  
 TELEPHONE (714) 383-0200 FAX (714) 383-0203

CITY OF RIVERSIDE  
 MONUMENTATION TIE SHEET

TRACT No. 22218  
 RECORDED IN M.B.

CHARTWELL DRIVE  
 WYNDHAM HILL DRIVE

- ⊗ FD. Ramset Nail on T/C
- FD. "C" Nail on T/C

- FD. LD. & TK. on T/C
- Set LD. & TK. on T/C

Scale: \_\_\_\_\_  
 Date: \_\_\_\_\_  
 Drawn by: \_\_\_\_\_  
 W.O.: \_\_\_\_\_  
 F.B.: \_\_\_\_\_

## OFFICIAL TIE PLAT

### CITY OF RIVERSIDE

*These ties are for the purpose of perpetuating the found monumentation. No claim is made as to the relationship of the points or lines shown hereon to true boundary locations.*

Sheet 1 of 1  
 File No.: \_\_\_\_\_

Street: WYNDHAM HILL DR. 8907 TIE  
 X-Street: CHARTWELL DR.  
 OFFICIAL USE ONLY