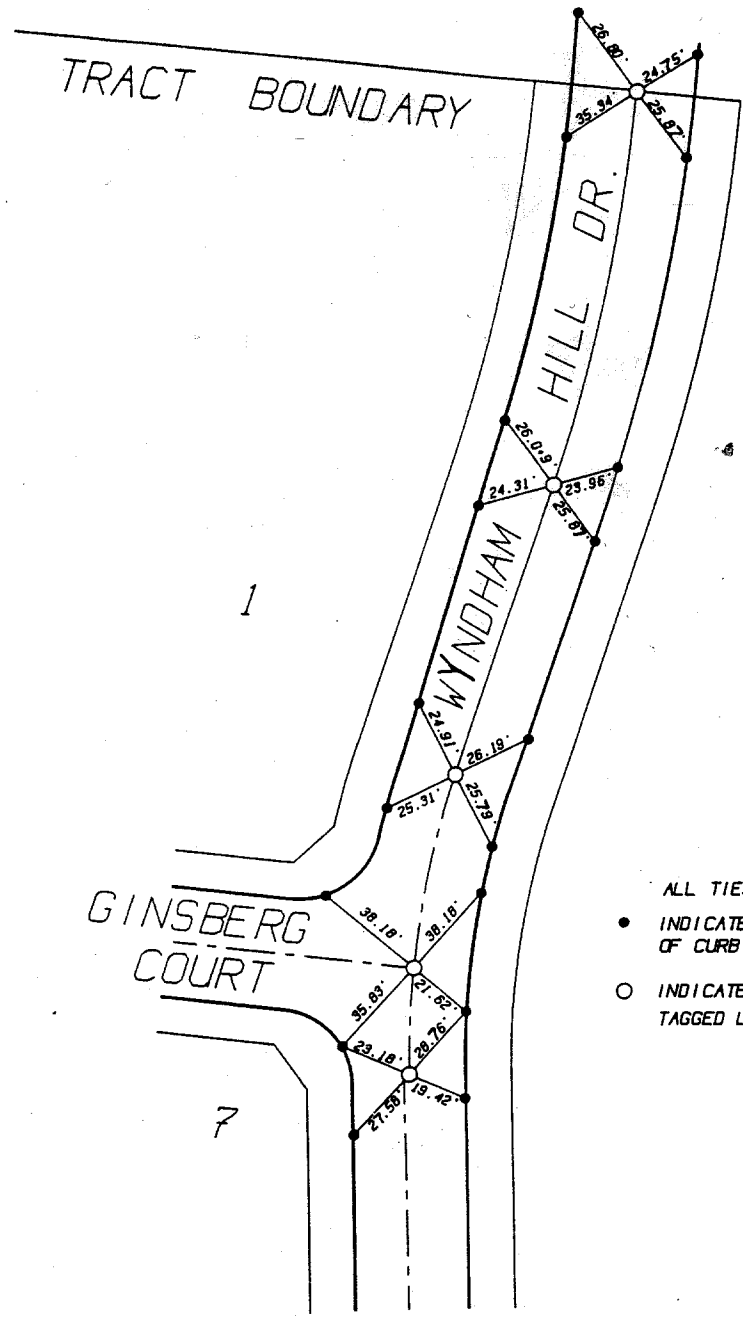


WYNDHAM HILL DR. AT GINSBERG CT.



- ALL TIES ARE TRANSIT TIES
- INDICATES SET NAIL IN TOP OF CURB
- INDICATES SET 1" I.P. TAGGED L.S. 3547 FLUSH

PLAT PREPARED BY:
INTEGRA ENGINEERING, INC.
 LAND SURVEYORS * CIVIL ENGINEERS
 621 E. CARNEGIE DRIVE, #120, SAN BERNARDINO, CA. 92408
 TELEPHONE (714) 383-0200 FAX (714) 383-0203

CITY OF RIVERSIDE
 MONUMENTATION TIE SHEET
TRACT No. 21188
 RECORDED IN M.B. 229/60-63

- ✕ FD. Ramset Nail on T/C
- FD. LD. & TK. on T/C
- FD. "C" Nail on T/C
- Set LD. & TK. on T/C

Street: **WYNDHAM HILL DR.**
870871E
 OFFICIAL USE ONLY
 X-Street: **GINSBERG CT.**

Scale:
 Date:
 Drawn by:
 W.O.:
 F.B.:

OFFICIAL TIE PLAT
CITY OF RIVERSIDE
These ties are for the purpose of perpetuating the found monumentation. No claim is made as to the relationship of the points or lines shown hereon to true boundary locations.

Sheet 1 of 1
 File No.: