

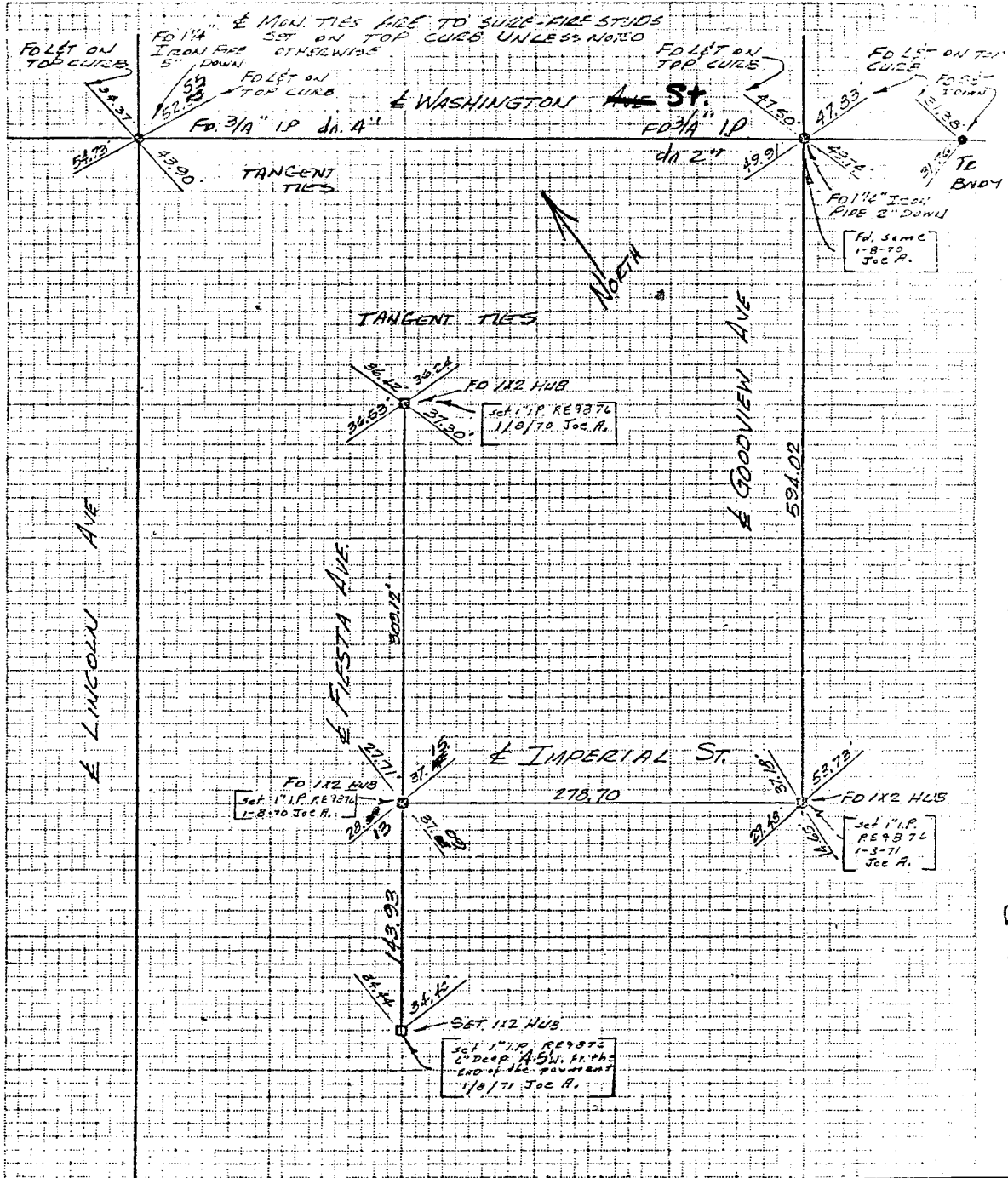
SURVEY OF TRACT # 40-11 TIES TO E MAIN'S

DATE OCT. 12, 70 © LINCOLN & GOODVIEW  
J.O. 69-549

PARTY NO. AND MEMBERS PEREZ, DIEZ, WADLEY

F.B. 1014 PAGE 108

M.S.: NOTES CALC'D BY CALC'S CHECKED BY: MAP NO.: WEATHER:



Street: **WASHINGTON ST.**  
**8946 TIE**  
X-Street: **GOODVIEW AVE.**  
OFFICIAL USE ONLY

- ✗ FD. Ramset Nail on T/C
- FD. LD. & TK. on T/C
- FD. "C" Nail on T/C
- Set LD. & TK. on T/C

Scale:  
Date:  
Drawn by:  
W.O.:  
F.B.:

## OFFICIAL TIE PLAT

### CITY OF RIVERSIDE

These ties are for the purpose of perpetuating the found monumentation. No claim is made as to the relationship of the points or lines shown hereon to true boundary locations.

Sheet 1 of 1  
File No.: