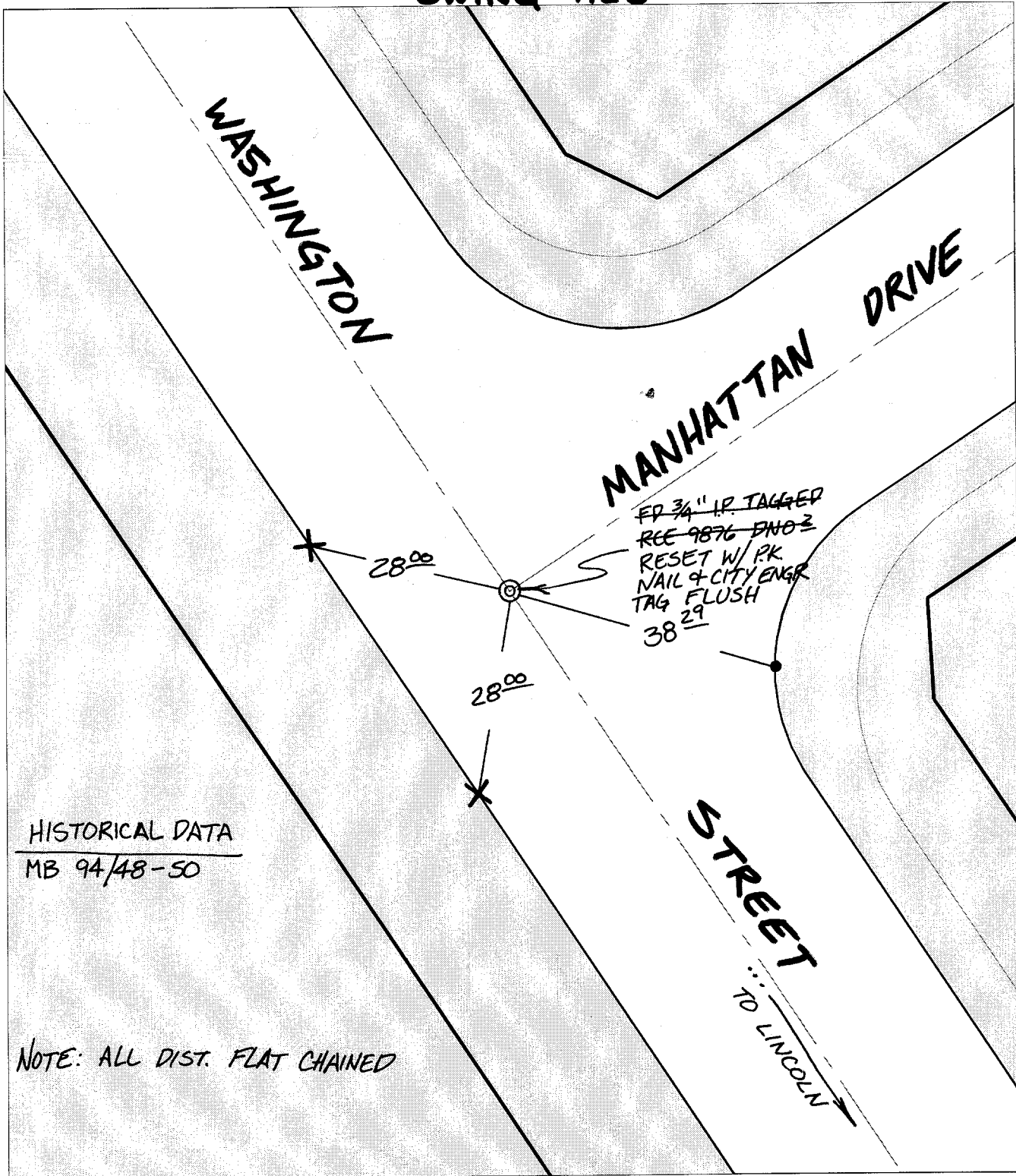


**SWING TIES**



HISTORICAL DATA  
MB 94/48-50

NOTE: ALL DIST. FLAT CHAINED

Street: WASHINGTON STREET  
**8956 71E**  
X-Street: MANHATTAN DRIVE  
OFFICIAL USE ONLY

- ✕ FD. Ramset Nail on T/C      ● FD. LD. & TK. on T/C
- FD. "C" Nail on T/C      ○ Set LD. & TK. on T/C

P.K. and City Engineer tag to be set @ surface after street construction is complete. (If possible)

Scale: 1" = 20'  
Date: 04/09/01  
Drawn by: SURVEY  
W.O.:  
F.B.:

**OFFICIAL TIE PLAT**  
CITY OF RIVERSIDE

*These ties are for the purpose of perpetuating the found monumentation. No claim is made as to the relationship of the points or lines shown hereon to true boundary locations.*



Sheet 1 of 1  
File No.: