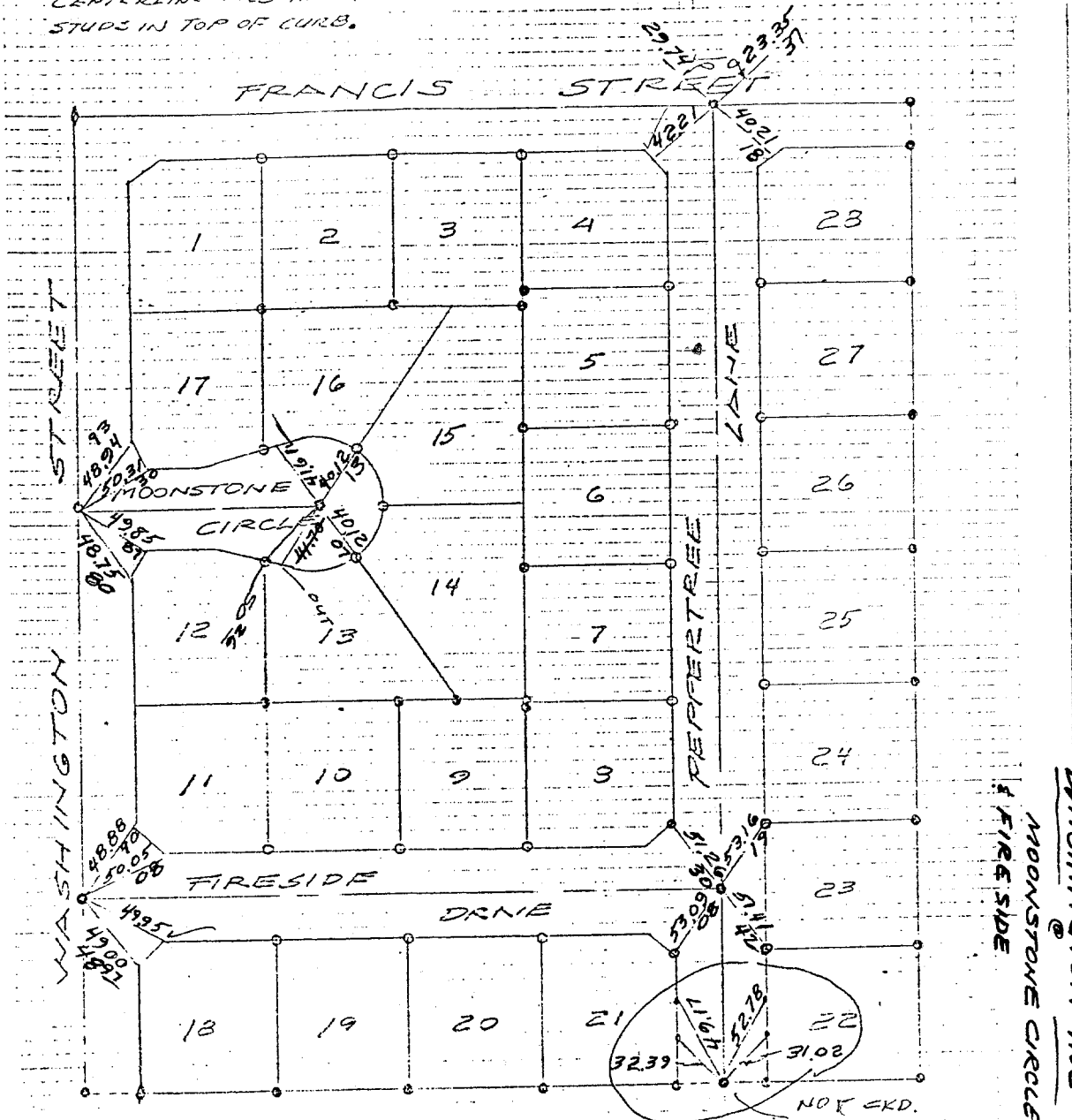


CENTERLINE TIES ARE TO
 STUDS IN TOP OF CURB.



Note:
 X = Set 1" IRCS 95% flush
 ● = Set stud & TK on top curb lot line prod

FLD. CKD. 10/21/77 BA
 R-1886

Street: **WASHINGTON ST.**
8960 TIE
 X-Street: **MOONSTONE CIR.**
 OFFICIAL USE ONLY

- ✕ FD. Ramset Nail on T/C
- FD. LD. & TK. on T/C
- FD. "C" Nail on T/C
- Set LD. & TK. on T/C

Scale:
 Date:
 Drawn by:
 W.O.:
 F.B.:

OFFICIAL TIE PLAT

CITY OF RIVERSIDE

These ties are for the purpose of perpetuating the found monumentation. No claim is made as to the relationship of the points or lines shown hereon to true boundary locations.

Sheet 1 of 1
 File No.: